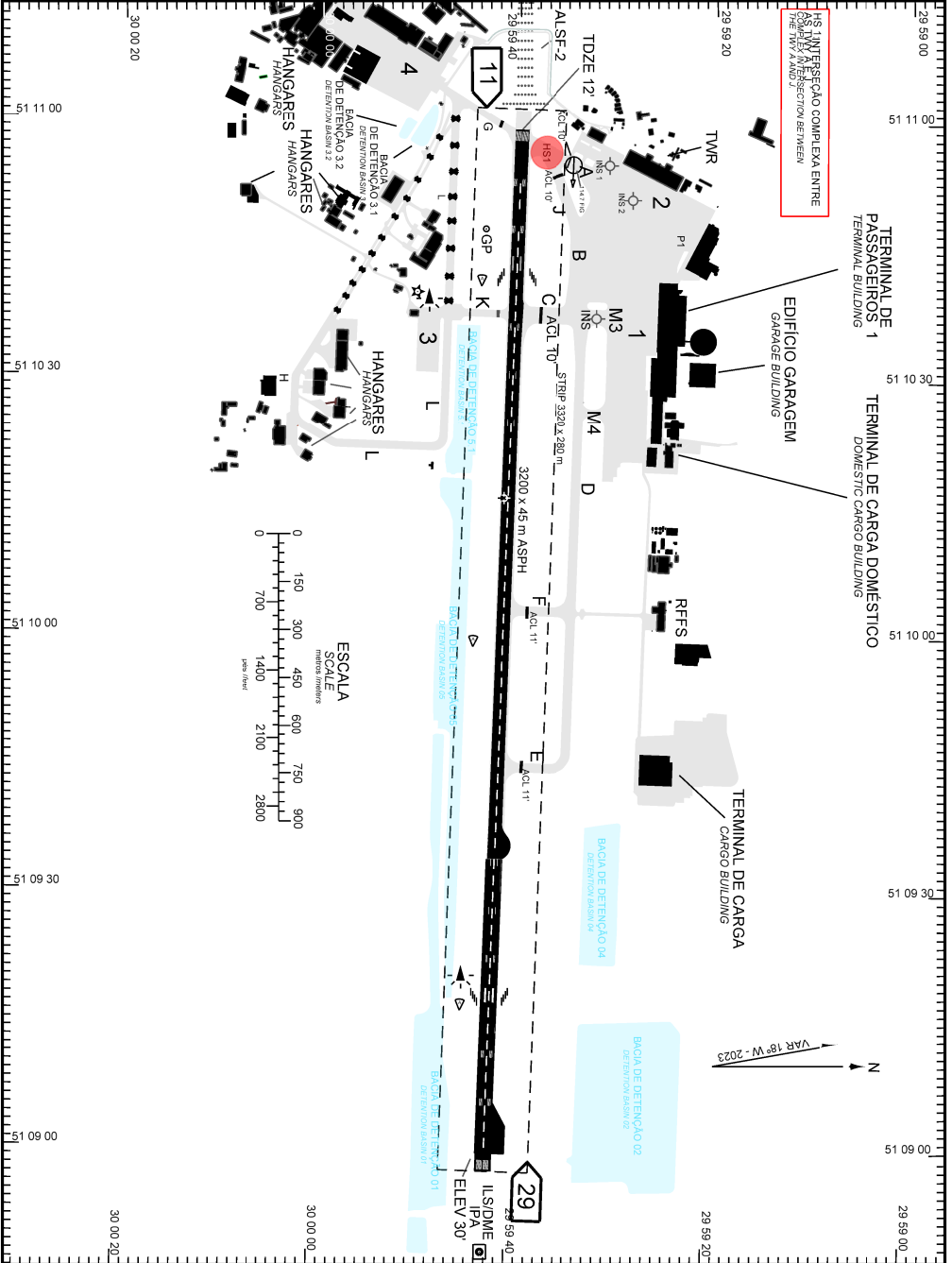


AD ELEV: 30'

ARP S29 59 41 W051 10 16

D-ATIS <b>132.35</b>	DCL <b>122.15</b>	GNDC <b>121.90</b>	TWR <b>118.10 121.50</b>	APRON <b>NIL</b>
-------------------------	----------------------	-----------------------	-----------------------------	---------------------



**ADC - SBPA: INFORMAÇÕES COMPLEMENTARES / COMPLEMENTARY INFORMATION**

**CARACTERÍSTICAS FÍSICAS / PHYSICAL CHARACTERISTICS**

PISTA RUNWAY				DIMENSÕES(m) DIMENSIONS(m)				PCN	TIPO DE SUPERFÍCIE SURFACE KIND		
RWY	BRG MAG	Tipo Type	RCD	RWY	SWY	CWY	STRIP	RWY	RWY	SWY	
a	b	c	d	e	f	g	h	i	j	k	
11	109	PA 2	4E	3200x45			3320 x 280	72/F/B/X/T	ASPH		
29	289	NPA	4E								

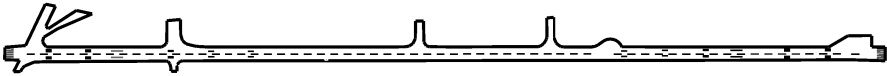
**DISTÂNCIAS DECLARADAS, AUXÍLIOS VISUAIS E COORDENADAS DAS CABECEIRAS  
DECLARED DISTANCES, VISUAL AIDS AND THRESHOLD COORDINATES**

RWY	TORA(m)	TODA(m)	ASDA(m)	LDA(m)	AUXÍLIOS / AIDS	ALTURA GEOIDAL(m) GEOID HEIGHT(m)	COORDENADAS COORDINATES
11	3200	3200	3200	3200	ALSF - 2 / PAPI	4,57	S29 59 40 W051 10 59
29	3200	3200	3200	3200	PAPI	4,53	S29 59 42 W051 08 59

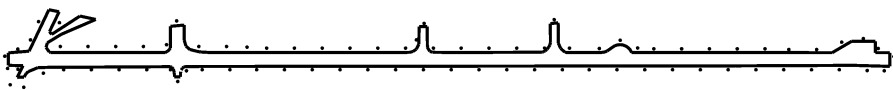
**SERVIÇO DE SALVAMENTO E CONTRAINCÊNDIO / RESCUE AND FIRE FIGHTING SERVICE: RFFS REQ - 9**

RWY 11/ 29

**Sinalização horizontal / Marking Aids**



**Auxílios luminosos / Lighting Aids**



- RMK:** 1) MEHT: PAPI - RWY 29 - 73FT  
RWY 11 - 68FT
- 2) TWY F E TWY K PROIBIDO OPS ACFT COM ENVERGADURA ACIMA DE 36M.  
TWY F AND TWY K PROHIBITED OPS ACFT WITH WINGSPAN GREATER THAN 36M.