

INSTRUMENT APPROACH
CHART (IAC)

RIO DE JANEIRO / Galeão - Antônio Carlos Jobim, INTL (SBGL)

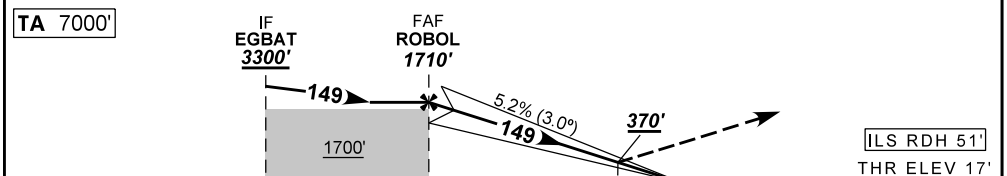
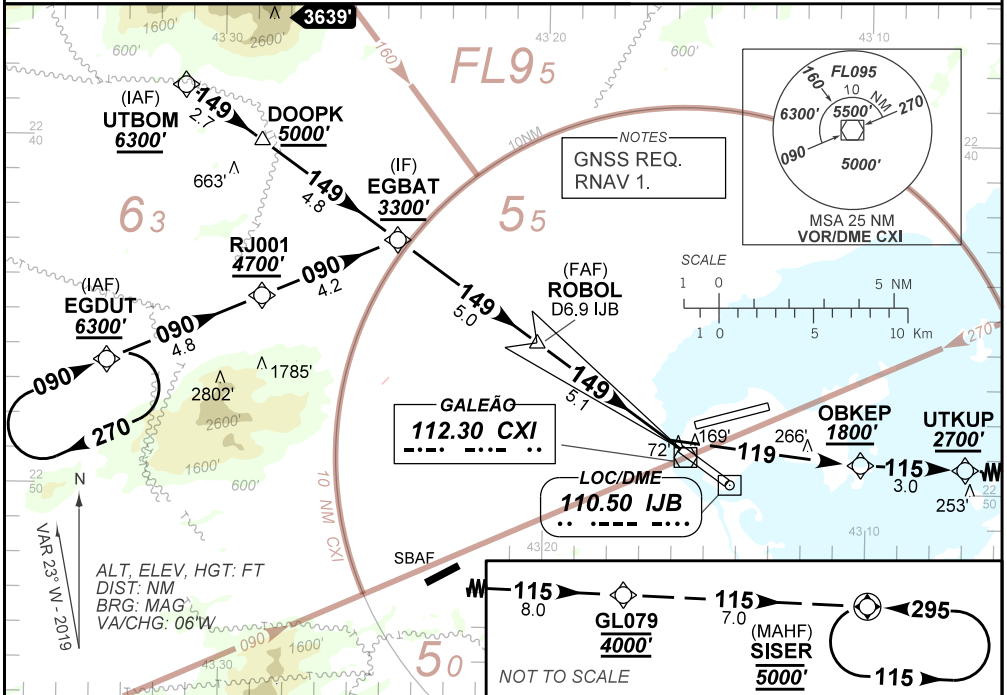
AD ELEV: 28'

ILS Z RWY 15

D-ATIS 127.60	APP RIO 133.30 124.95 134.95 126.20 129.80 128.90 119.35 125.95 134.40 121.25			TWR GALEÃO 118.00 118.20	GNDC GALEÃO 121.65 128.35
LOC IJB 110.50 MHz	FINAL CRS 149°	FAF 1710'	CAT I DA / (OCH): 370' / (353')		N/A

APCH Perdida: Subir para **5000'**, gradiente MNM 5%. Curvar à ESQUERDA rumo **119** para OBKEP. Após, manter rumo **115** para espera em SISER.

Missed APCH: Climb to **5000'**, MNM gradient 5%. Turn LEFT course **119** to OBKEP. After, maintain course **115** for holding over SISER.



TO THR 15 (NM)	10.1	5.1	0.9
TO IJB (NM)	11.9	6.9	2.7

NIL	RWY15	KT	090	110	130	150	170	190
NIL	ALT	FPM	NIL					
NIL	(HGT)	FAF-MAPT	NA					

STRAIGHT-IN	CAT	A	B	C	D	E
CAT I	DA / (OCH)	370' / (353')				
	ALS/NO ALS/ RVR ALS (m)	900 / 1600 / 850				
CIRCLING	MDA / (OCH)	NA				
	VIS (m)	NA				

CHANGES: EAC LAYOUT, MNM OPR.