

**INSTRUMENT APPROACH
CHART (IAC)**

GAVIÃO PEIXOTO / EMBRAER - Unidade Gavião Peixoto (SBGP)

AD ELEV: 1998'

**USO EXCLUSIVO ENSAIO EM VOO
FLIGHT TEST ONLY**

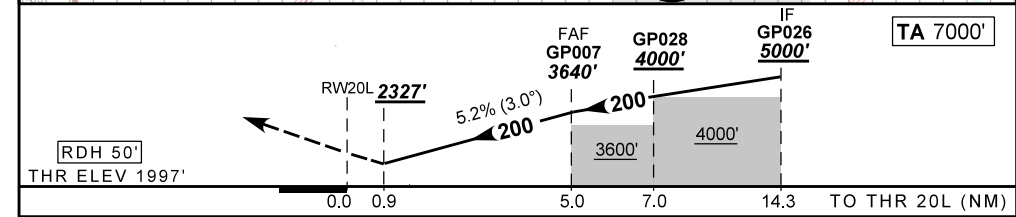
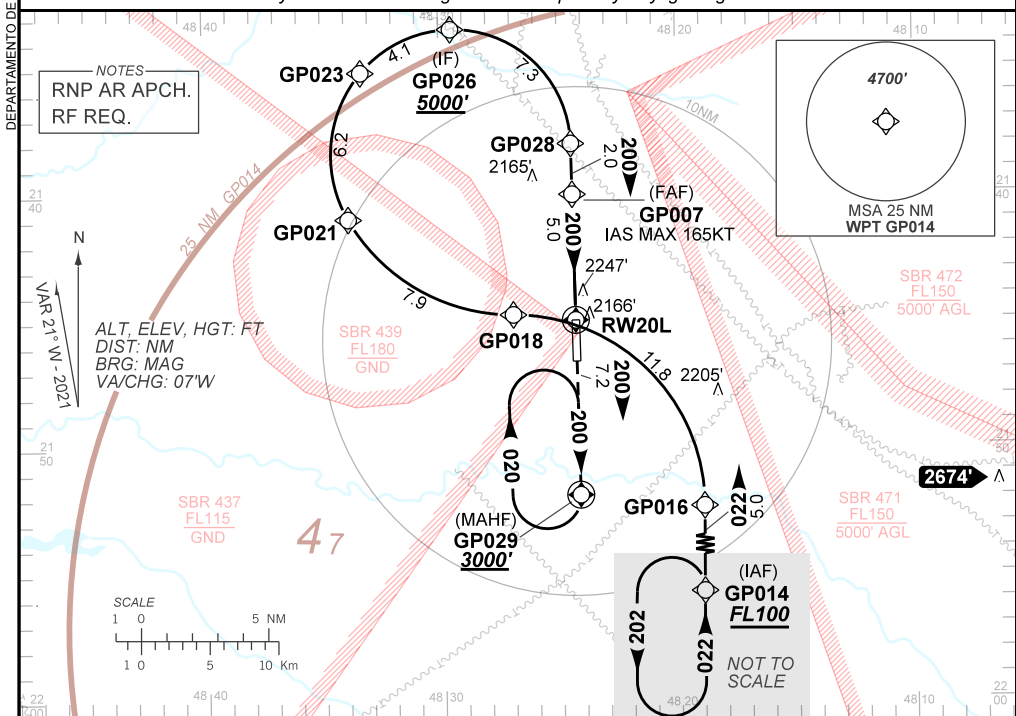
RNP X RWY 20L (AR)

ATIS NIL	APP ACADEMIA 120.10 122.40	AFIS GAVIÃO 118.95
-------------	-------------------------------	-----------------------

TEMP LNAV/VNAV MIN 0°C / MAX 45°C	FINAL CRS 200°	FAF: 3640'	RNP 0.3 DA / (OCH): 2327' / (330')	N/A
--------------------------------------	-------------------	---------------	---------------------------------------	-----

APCH Perdida: Subir para **3000'**. Manter rumo **200** até GP029 para espera
Missed APCH: Climb to **3000'**. Maintain course **200** to GP029 for holding.

RMK: Procedimento de uso exclusivo da EMBRAER para ensaio em voo. Compusório voo diurno sob VFR.
Procedure of exclusive use by EMBRAER for flight test. Compulsory daylight flight under VFR.



RWY20L	0.9	2.0	3.0	4.0	GP007	Ground Speed (KT)	090	110	130	150	170	190
ALT	2327	2684	3003	3321	3640	FPM	500	600	700	800	900	NA
(HGT)	329	686	1005	1323	1642	FAF-MAPT	NIL					

STRAIGHT-IN	CAT	A	B	C	D	E
	DA / (OCH)	2327' / (330')				NA
RNP 0.3	ALS/NO ALS/ RVR ALS (m)	NIL / 1600 / NIL				NA

AUTORIZAÇÃO ESPECIAL PARA AERONAVE E TRIPULAÇÃO REQUERIDA
SPECIAL AUTHORIZATION FOR AIRCRAFT AND CREW REQUIRED

Aprovação Específica (ANAC IS 91.001)
Specific Approval (ANAC IS 91.001)

CHANGES: FREQ. IDENT. TA.

DEPARTAMENTO DE CONTROLE DO ESPAÇO AÉREO