

**INSTRUMENT APPROACH  
CHART (IAC)**

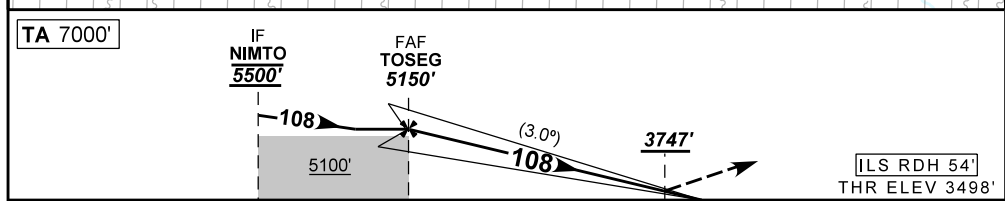
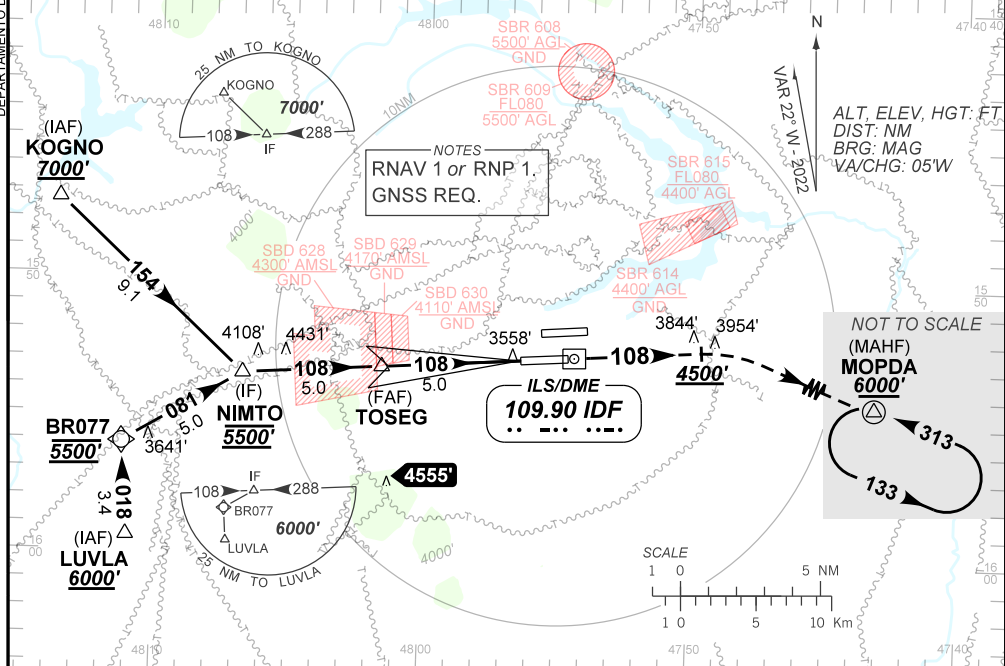
**BRASÍLIA / Pres. Juscelino Kubitschek, INTL (SBBR)**

**ILS Z RWY 11R**

**AD ELEV: 3498'**

D-ATIS <b>127.80</b>	APP BRASÍLIA <b>119.70 129.60 119.20 120.00</b>		TWR BRASÍLIA <b>118.10 118.45 118.75</b>	GND C BRASÍLIA <b>121.80 121.95</b>
ILS/DME IDF <b>109.90 MHz</b>	FINAL CRS <b>108°</b>	FAF: <b>5150'</b>	CAT I DA / (OCH): <b>3747' / (249')</b>	N/A

APCH Perdida: Subir para **6000'**. Manter proa **108** até **4500'**. Curvar à DIREITA direto MOPDA para espera.  
 Missed APCH: Climb to **6000'**. Maintain heading **108** until **4500'**. Turn RIGHT direct MOPDA for holding.  
 RMK: (\*)VIS RVR ALS 550m para APCH utilizando Diretor de Voo, Piloto Automático ou Head-Up Display (HUD).  
 (\*)VIS RVR ALS 550m for APCH using a Flight Director, Autopilot or Head-Up Display (HUD).



TO THR 11R (NM)	10.0	5.0	0.6	0.0
TO IDF (DME)	11.9	6.9	2.5	1.9

NIL	RWY11R	Ground Speed (KT)	090	110	130	150	170	190
NIL	ALT	FPM	NIL					
NIL	(HGT)	FAF-MAPT	NIL					

STRAIGHT-IN	CAT	A	B	C	D	E
CAT I	DA / (OCH)	3747' / (249')				
	ALS/NO ALS/ RVR ALS (m)	800 / 1300 / 700(*)				
CIRCLING	MDA / (OCH)	NA				
	VIS (m)	NA				

CHANGES: EAC, FAF, LAYOUT.