

STANDARD DEPARTURE CHART
INSTRUMENT (SID)

ARACAJU / Santa Maria, INTL (SBAR)
RWY 12

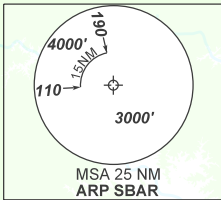
AD ELEV: 23'

RNAV AKNUT 1A - GATUL 2A - GERSO 1A - SIMAD 2A

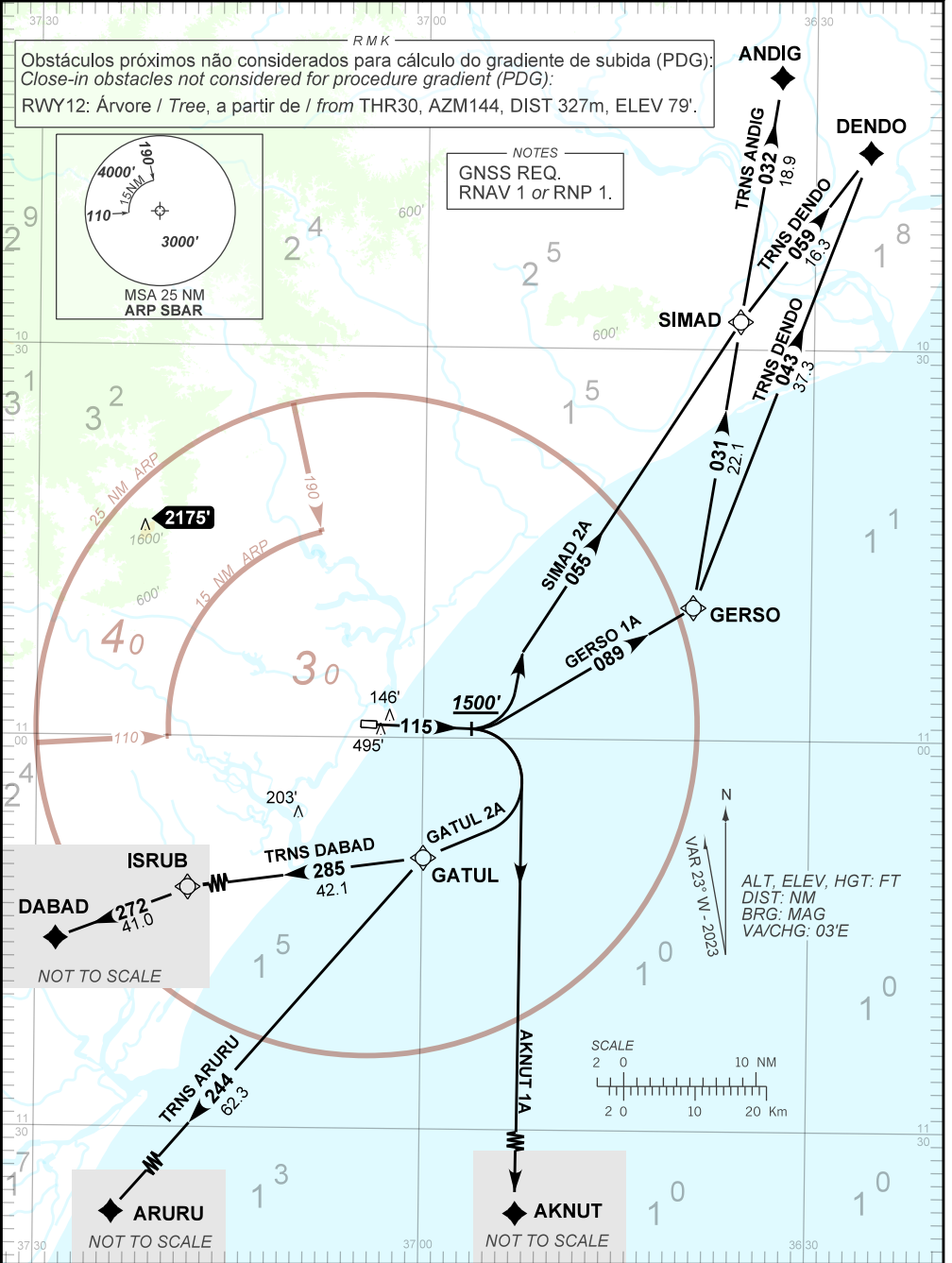
TA 4000'	ATIS NIL	TWR ARACAJU 118.10 118.80	APP ARACAJU 129.25 120.30	ACC RECIFE 125.45 126.85 133.65 134.50
----------	----------	---------------------------	---------------------------	--

DEPARTAMENTO DE CONTROLE DO ESPAÇO AÉREO

Obstáculos próximos não considerados para cálculo do gradiente de subida (PDG):
Close-in obstacles not considered for procedure gradient (PDG):
RWY12: Árvore / Tree, a partir de / from THR30, AZM144, DIST 327m, ELEV 79'.



NOTES
GNSS REQ.
RNAV 1 or RNP 1.



CHANGES: NIL