

**INSTRUMENT APPROACH
CHART (IAC)**

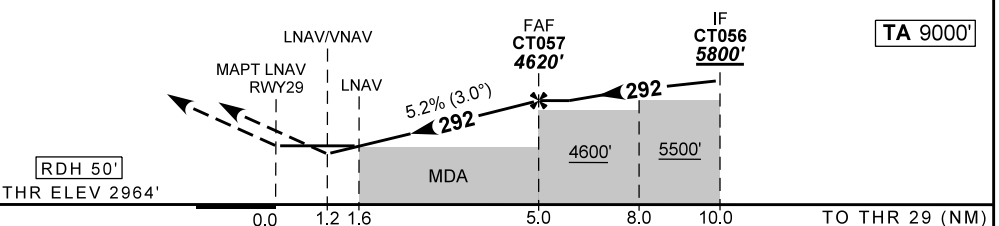
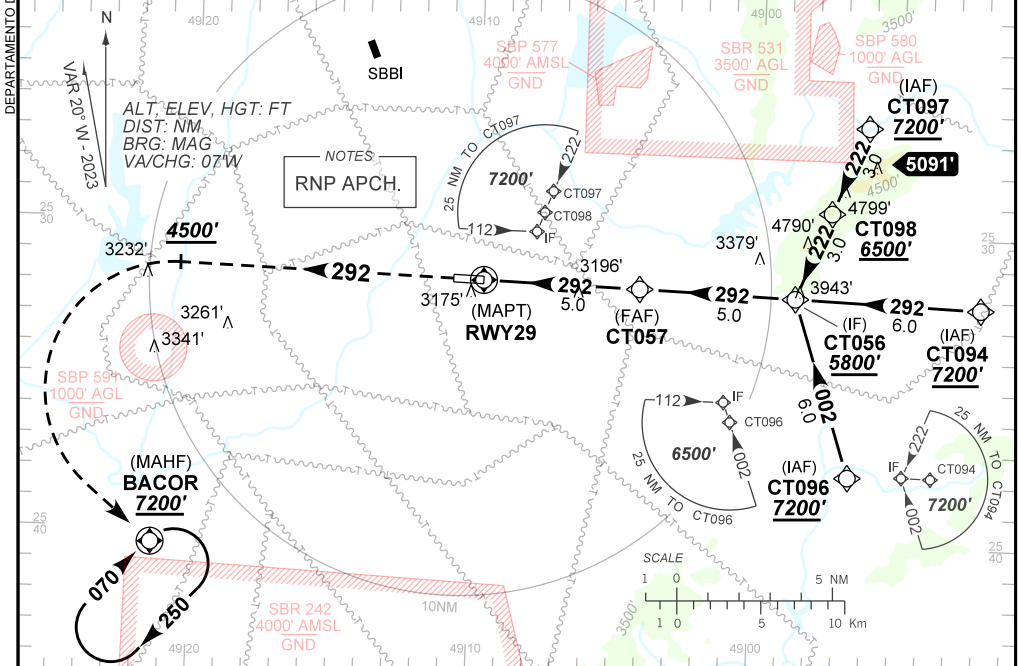
CURITIBA / Afonso Pena, INTL (SBCT)

RNP RWY 29

AD ELEV: 2989'

D-ATIS 127.80	APP CURITIBA 119.95 119.70 120.65 120.95 129.55 133.15			TWR CURITIBA 118.15	GNDC CURITIBA 121.90
TEMP LNAV/VNAV MIN -10°C / MAX 45°C	FINAL CRS 292°	FAF: 4620'	LNAV/VNAV DA / (OCH): 3402' / (438')	LNAV MDA / (OCH): 3510' / (550')	

APCH Perdida: 1) Subir para **7200'**. Manter rumo **292** até cruzar **4500'**. Após, curvar à ESQUERDA direto BACOR para espera. 2) IAS MAX 250KT até BACOR.
Missed APCH: 1) Climb to **7200'**. Maintain course **292** until passing **4500'**. After, turn LEFT direct BACOR for holding. 2) IAS MAX 250KT until BACOR.



RWY29	1.6	2.0	3.0	4.0	CT057		Ground Speed (KT)	090	110	130	150	170	190
ALT	3510	3651	3969	4288	4620		FPM	500	600	700	800	900	NA
(HGT)	550	687	1005	1324	1656		FAF-MAPT	NA					

STRAIGHT-IN	CAT	A	B	C	D	E
	DA / (OCH)	3402' / (438')				NA
LNAV/VNAV	ALS/NO ALS/ RVR ALS (m)	NIL / 2000 / NIL				
	MDA / (OCH)	3510' / (550')				
LNAV	ALS/NO ALS/ RVR ALS (m)	NIL / 2000 / NIL		NIL / 2500 / NIL		
	MDA / (OCH)	NA				
CIRCLING	MDA / (OCH)	NA				
	VIS (m)	NA				

CHANGES: EAC. LAYOUT. OBST. VAR.