

**INSTRUMENT APPROACH  
CHART (IAC)**

**PIRASSUNUNGA / Campo Fontenelle, MIL (SBYS)**

**NAV APV RWY 02C**

(ONLY CAT E)

**AD ELEV: 1976'**

**USO EXCLUSIVO F-39  
F-39 USE ONLY**

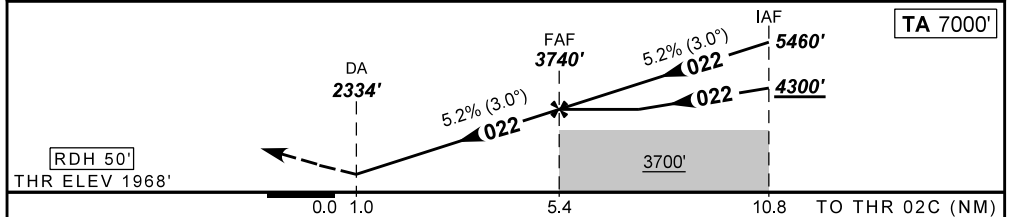
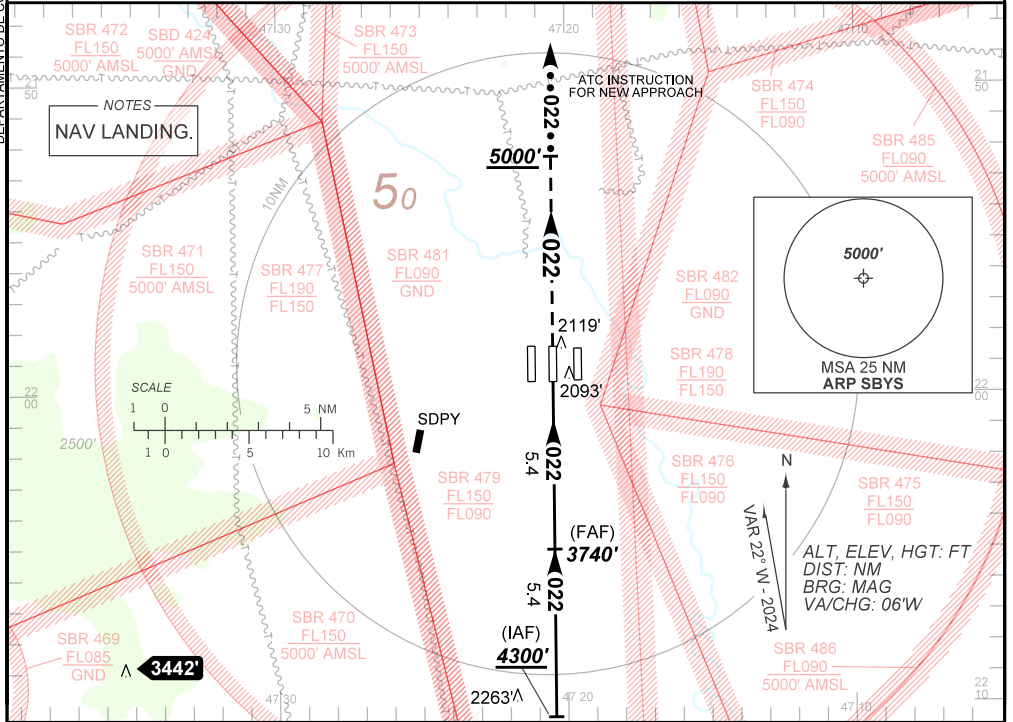
ATIS <b>127.70</b>	APP ACADEMIA <b>120.10 122.40 122.80 124.90 135.45</b>	TWR ACADEMIA <b>118.30</b>	GND C ACADEMIA <b>121.90</b>
-----------------------	---	-------------------------------	---------------------------------

TEMP LNAV/VNAV <b>MIN -10°C / MAX 50°C</b>	FINAL CRS <b>022°</b>	FAF: <b>3740'</b>	NAV APV DA / (OCH): <b>2334' / (366')</b>	<b>N/A</b>
---	--------------------------	----------------------	--	------------

APCH Perdida: Subir para **5000'** no rumo **022** e aguardar instruções ATC.

Missed APCH: Climb to **5000'** on course **022** and expect further ATC instructions.

DEPARTAMENTO DE CONTROLE DO ESPAÇO AÉREO



RWY02C	1.0	2.0	3.0	4.0	5.0	FAF	Ground Speed (KT)	090	110	130	150	170	190
ALT	2334	2655	2973	3292	3610	3740	FPM	500	600	700	800	900	1000
(HGT)	366	687	1005	1324	1642	1772	FAF-MAPT	NIL					

STRAIGHT-IN	CAT	ONLY CAT E
	DA / (OCH)	2334' / (366')
NAV APV	ALS/NO ALS/ RVR ALS (m)	NIL / 1700 / NIL
		NA
CIRCLING	MDA / (OCH)	NA
	VIS (m)	

CHANGES: NEW CHART.