

**INSTRUMENT APPROACH
CHART (IAC)**

**SANTANA DO PARAÍSO / Usiminas (SBIP)
RNP Z RWY 05**

AD ELEV: 786'

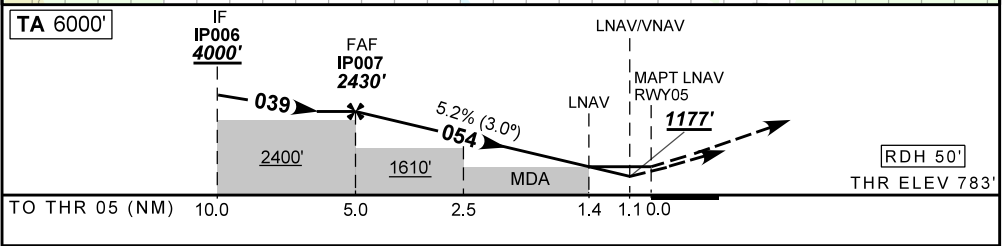
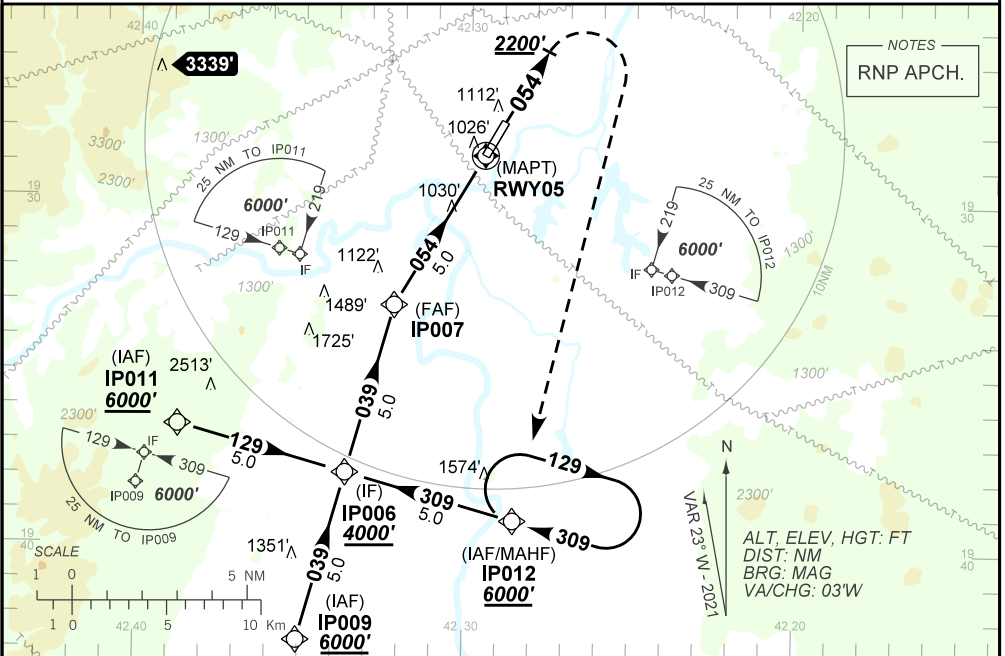
(CAT A,B,C)

ATIS NIL	APP NIL	AFIS USIMINAS 130.00	ERAA 126.30	GNDC NIL
TEMP LNAV/VNAV MIN 0°C / MAX 45°C	FINAL CRS 054°	FAF: 2430'	LNAV/VNAV DA / (OCH): 1177' / (394')	LNAV MDA / (OCH): 1280' / (500')

APCH Perdida: Subir para **6000'**. Manter a proa **054** até **2200'**. Após, curvar à DIREITA direto IP012 para espera.

Missed APCH: Climb to **6000'**. Maintain heading **054** until **2200'**. After, turn RIGHT direct IP012 for holding.

DEPARTAMENTO DE CONTROLE DO ESPAÇO AÉREO



IP007	4.0	3.0	2.5	2.0	1.4	RWY05	Ground Speed (KT)	090	110	130	150	170	190
2430	2107	1788	1630	1470	1280	ALT	FPM	500	600	700	800	NA	
1647	1324	1005	847	687	500	(HGT)	FAF-MAPT	NA					

STRAIGHT-IN	CAT	A	B	C	D	E
	DA / (OCH)	1177' / (394')				
LNAV/VNAV	ALS/NO ALS/ RVR ALS (m)	NIL / 1800 / NIL				
	MDA / (OCH)	1280' / (500')				
LNAV	ALS/NO ALS/ RVR ALS (m)	NIL / 1800 / NIL			NIL / 2300 / NIL	
	MDA / (OCH)	NA				
CIRCLING	MDA / (OCH)	NA				
	VIS (m)	NA				

CHANGES: FREQ, IDENT, LAYOUT, MNN, OPR.