

**INSTRUMENT APPROACH
CHART (IAC)**

SANTA MARIA / Santa Maria (SBSM)

**USO EXCLUSIVO ACFT MILITARES
MILITARY ACFT ONLY**

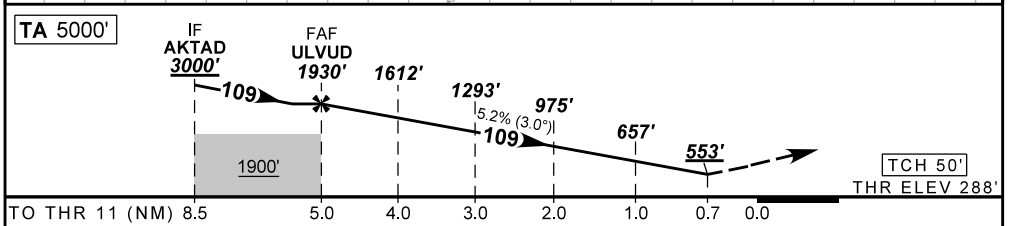
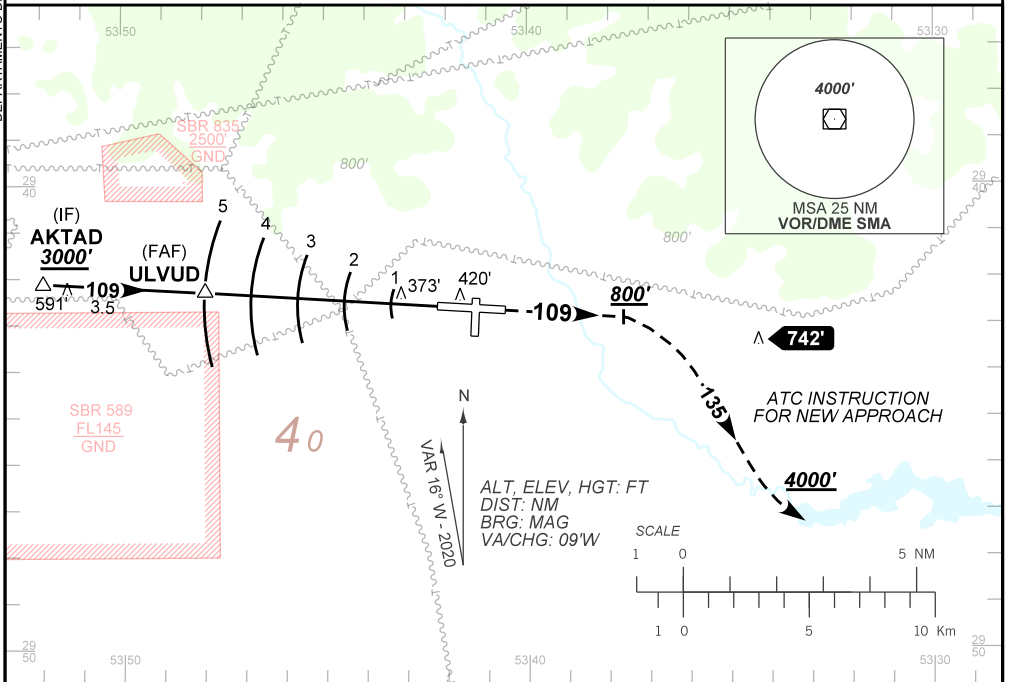
AD ELEV: 289'

PAR Y RWY 11

| | | | | | |
|-----------------------|---|--|---|---|--------------------|
| ATIS 127.75 | APP SANTA MARIA 119.35 121.35 | PAR SANTA MARIA 129.05 129.40 129.80 | TWR SANTA MARIA 118.30 118.85 | AFIS SANTA MARIA 119.35 121.35 118.30 | GNDC NIL |
| N/A | FINAL CRS 109° | FAF: 1930' | PAR DA / (OCH): 553' / (265') | N/A | |

APCH Perdida: Subir para **4000'**. Manter rumo **109** até **800'**. Então, curvar à DIREITA rumo **135** e aguardar instruções ATC.

Missed APCH: Climb to **4000'**. Maintain course **109** until **800'**. Then, turn RIGHT course **135** and expect ATC instructions.



| | | | | | | | | | | | | |
|------|------|------|-----|-----|-------|-------------------|-----|-----|-----|-----|-----|------|
| FAF | 4.0 | 3.0 | 2.0 | 1.0 | RWY11 | Ground Speed (KT) | 090 | 110 | 130 | 150 | 170 | 190 |
| 1930 | 1612 | 1293 | 975 | 657 | ALT | FPM | 500 | 600 | 700 | 800 | 900 | 1000 |
| 1642 | 1324 | 1005 | 687 | 369 | (HGT) | FAF-MAPT | NA | | | | | |

| | | | | | | |
|-------------|-------------------------|------------------|---|---|---|---|
| STRAIGHT-IN | CAT | A | B | C | D | E |
| PAR | DA / (OCH) | 553' / (265') | | | | |
| | ALS/NO ALS/ RVR ALS (m) | 800 / 1300 / NIL | | | | |
| CIRCLING | MDA / (OCH) | NA | | | | |
| | VIS (m) | NA | | | | |

AIRAC AMDT 2401A1 25 JAN 24

USO EXCLUSIVO ACFT MILITARES / MILITARY ACFT ONLY

**SBSM_IAC_01D/11
IAC PAR Y RWY 11**

DEPARTAMENTO DE CONTROLE DO ESPAÇO AÉREO

CHANGES: EAC. LAYOUT: MISSED APCH.