

**INSTRUMENT APPROACH CHART (IAC)**

**NATAL / Campo Augusto Severo, MIL (SBNT)**

**RNP RWY 30**

**AD ELEV: 169'**

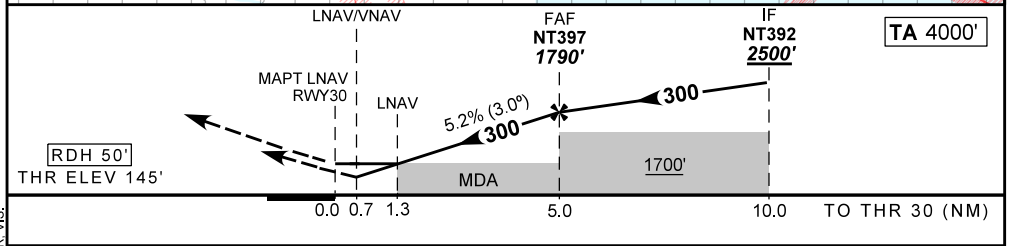
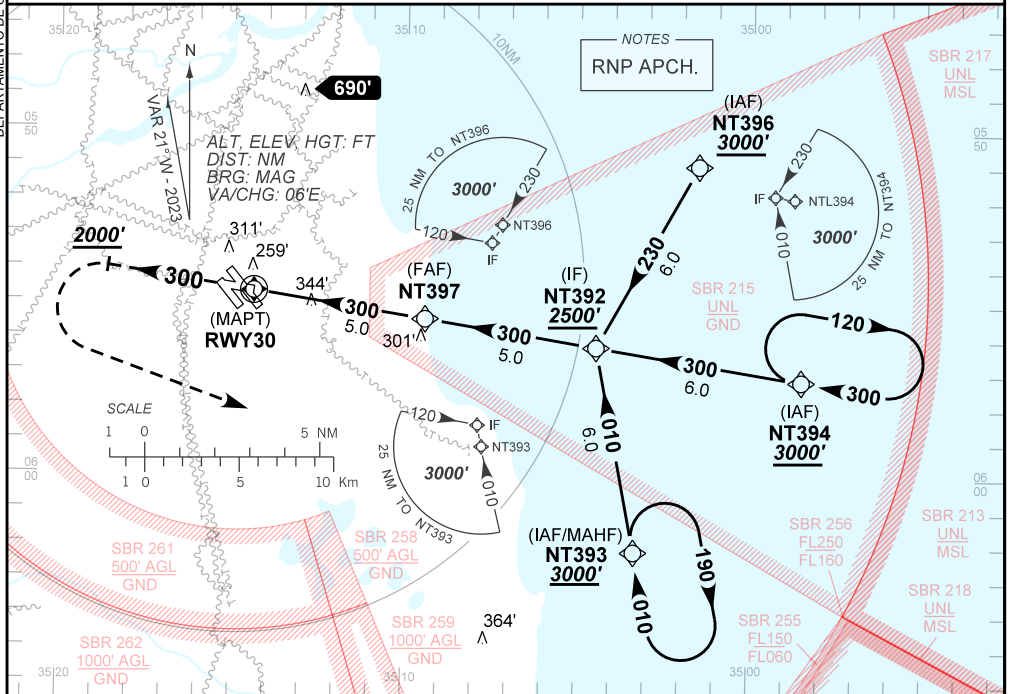
D-ATIS <b>132.65</b>	APP NATAL <b>119.30 119.65 120.65 129.80</b>	TWR NATAL <b>118.70 122.80</b>	GNDC NATAL <b>121.90</b>
-------------------------	---	-----------------------------------	-----------------------------

TEMP LNAV/VNAV <b>MIN 0°C / MAX 50°C</b>	FINAL CRS <b>300°</b>	FAF: <b>1790'</b>	LNAV/VNAV DA / (OCH): <b>409' / (264')</b>	LNAV MDA / (OCH): <b>600' / (460')</b>
---	--------------------------	----------------------	---	---

APCH Perdida: Subir para **3000'**. Manter rumo **300** até **2000'**. Após, curvar à ESQUERDA direto NT393 para espera.

Missed APCH: Climb to **3000'**. Maintain course **300** until **2000'**. After, turn LEFT direct to NT393 for holding.

DEPARTAMENTO DE CONTROLE DO ESPAÇO AÉREO



RWY30	1.3	2.0	3.0	4.0	NT397		Ground Speed (KT)	090	110	130	150	170	190
ALT (HGT)	600	832	1150	1469	1790		FPM	500	600	700	800	900	1000
	460	687	1005	1324	1645		FAF-MAPT	NIL					

STRAIGHT-IN	CAT	A	B	C	D	E
	DA / (OCH)	409' / (264')				NA
LNAV/VNAV	ALS/NO ALS/ RVR ALS (m)	NIL / 1300 / NIL				NA
	MDA / (OCH)	600' / (460')				
LNAV	ALS/NO ALS/ RVR ALS (m)	NIL / 1600 / NIL		NIL / 2100 / NIL		
	MDA / (OCH)	NA				
CIRCLING	MDA / (OCH)	NA				
	VIS (m)	NA				

CHANGES: AD ELEV. LAYOUT. PROC. VAR. VIS.