

STANDARD DEPARTURE CHART
INSTRUMENT (SID)

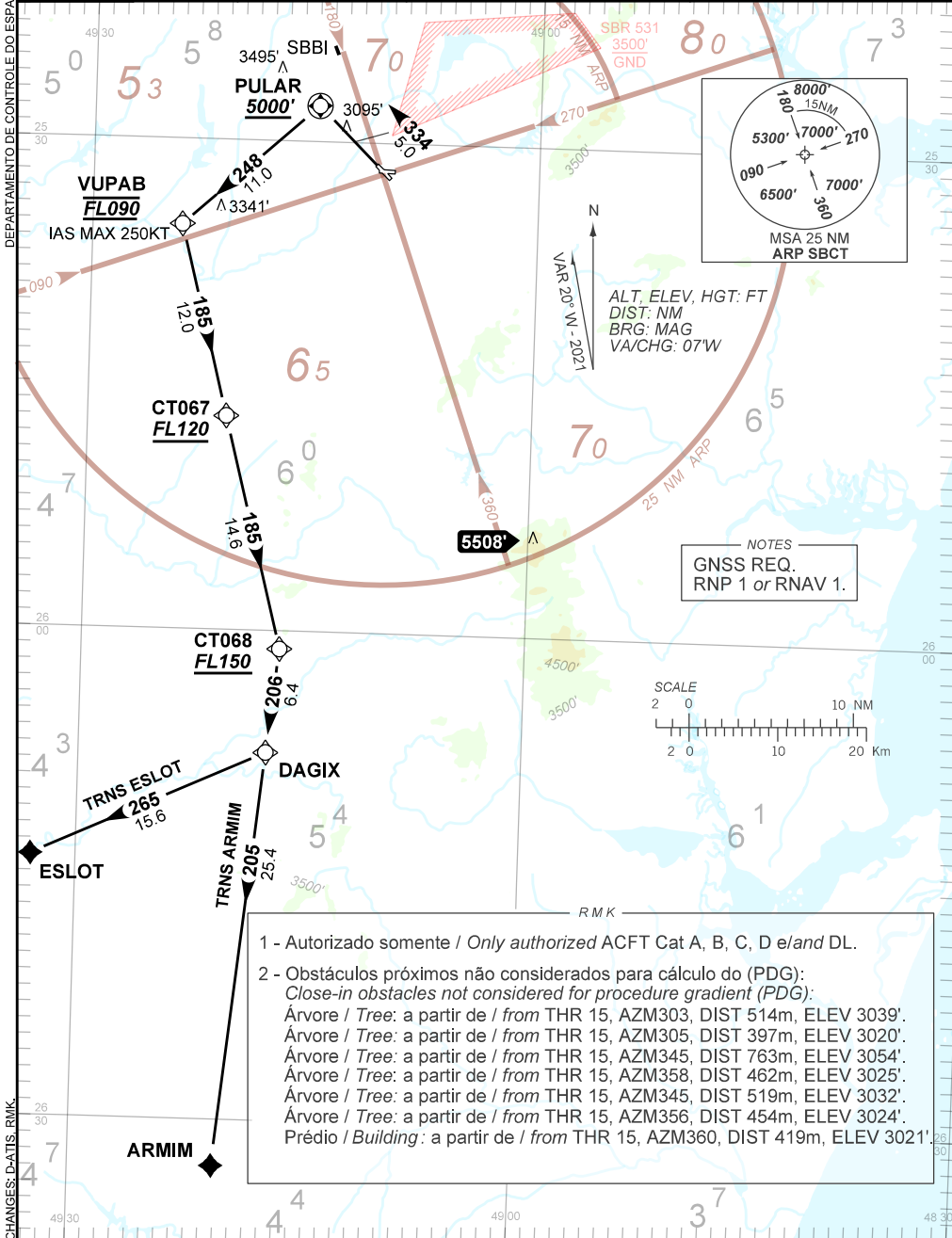
CURITIBA / Afonso Pena, INTL (SBCT)

RWY 33

AD ELEV: 2989'

RNAV DAGIX 1B

TA 9000'	D-ATIS 127.80	TWR CURITIBA 118.15	APP CURITIBA 119.70 119.95 120.65 129.55 120.95 133.15	ACC CURITIBA 126.10 127.50 128.45 135.85
----------	------------------	------------------------	--	--



- 1 - Autorizado somente / Only authorized ACFT Cat A, B, C, D e/and DL.
- 2 - Obstáculos próximos não considerados para cálculo do (PDG):
Close-in obstacles not considered for procedure gradient (PDG):
 - Árvore / Tree: a partir de / from THR 15, AZM303, DIST 514m, ELEV 3039'.
 - Árvore / Tree: a partir de / from THR 15, AZM305, DIST 397m, ELEV 3020'.
 - Árvore / Tree: a partir de / from THR 15, AZM345, DIST 763m, ELEV 3054'.
 - Árvore / Tree: a partir de / from THR 15, AZM358, DIST 462m, ELEV 3025'.
 - Árvore / Tree: a partir de / from THR 15, AZM345, DIST 519m, ELEV 3032'.
 - Árvore / Tree: a partir de / from THR 15, AZM356, DIST 454m, ELEV 3024'.
 - Prédio / Building: a partir de / from THR 15, AZM360, DIST 419m, ELEV 3021'.

CHANGES: D-ATIS: RMK