

**INSTRUMENT APPROACH
CHART (IAC)**

ALTAMIRA / Altamira (SBHT)

VOR RWY 07

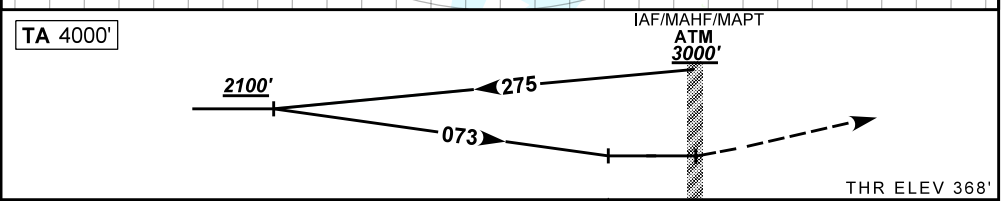
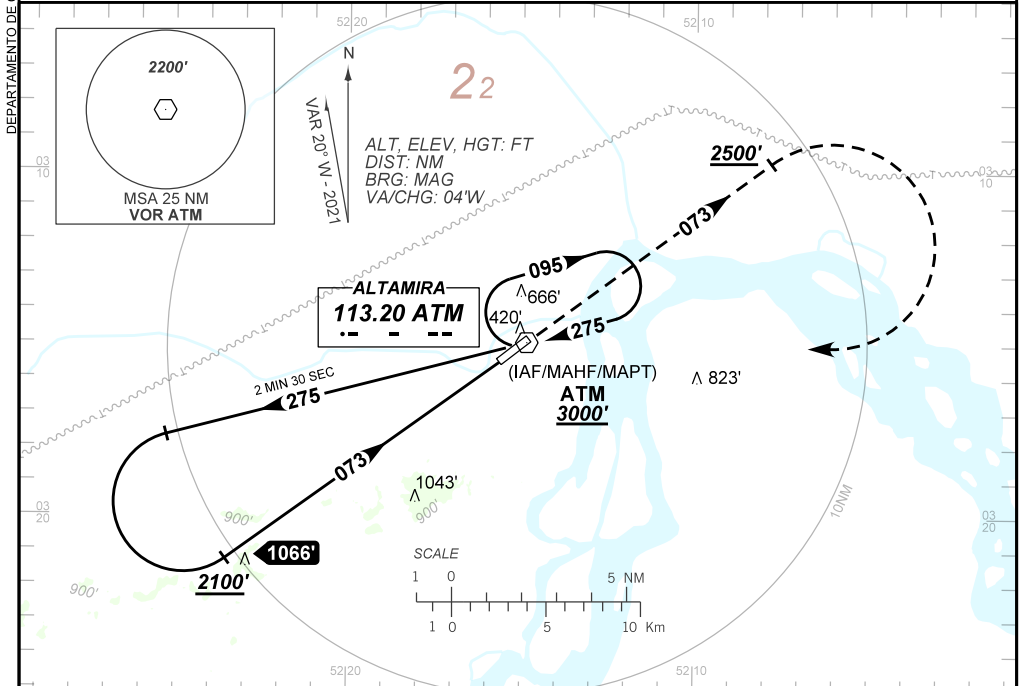
(CAT A,B,C)

AD ELEV: 368'

ATIS NIL	APP NIL	AFIS ALTAMIRA 125.85	GNDC NIL
VOR ATM 113.20 MHz	FINAL CRS 073°	N/A	VOR MDA / (OCH): 1370' / (1010')

APCH Perdida: Subir para **3000'**. Manter RDL **073** do VOR ATM até **2500'**. Após, curvar à DIREITA direto VOR ATM para espera.

Missed APCH: Climb to **3000'**. Maintain **073** RDL ATM VOR until **2500'**. After, turn RIGHT direct to ATM VOR for holding.



TA 4000'	IAF/MAHF/MAPT ATM 3000'	THR ELEV 368'
NIL	RWY07	Ground Speed (KT) 090 110 130 160 170 190
NIL	ALT	FPM 650 NA
NIL	(HGT)	FAF-MAPT NA

STRAIGHT-IN	CAT	A	B	C	D	E
VOR	MDA / (OCH)	1370' / (1010')			NA	
	ALS/NO ALS/ RVR ALS (m)	NIL / 2000 / NIL	NIL / 2400 / NIL	NIL / 4900 / NIL		
CIRCLING	MDA / (OCH)	NA				
	VIS (m)					

CHANGES: LAYOUT, MDA, PROC, TA, THEL, VIS.