

STANDARD DEPARTURE CHART
INSTRUMENT (SID)

MANAUS / Campo Ponta Pelada, MIL (SBMN)

RWY 09

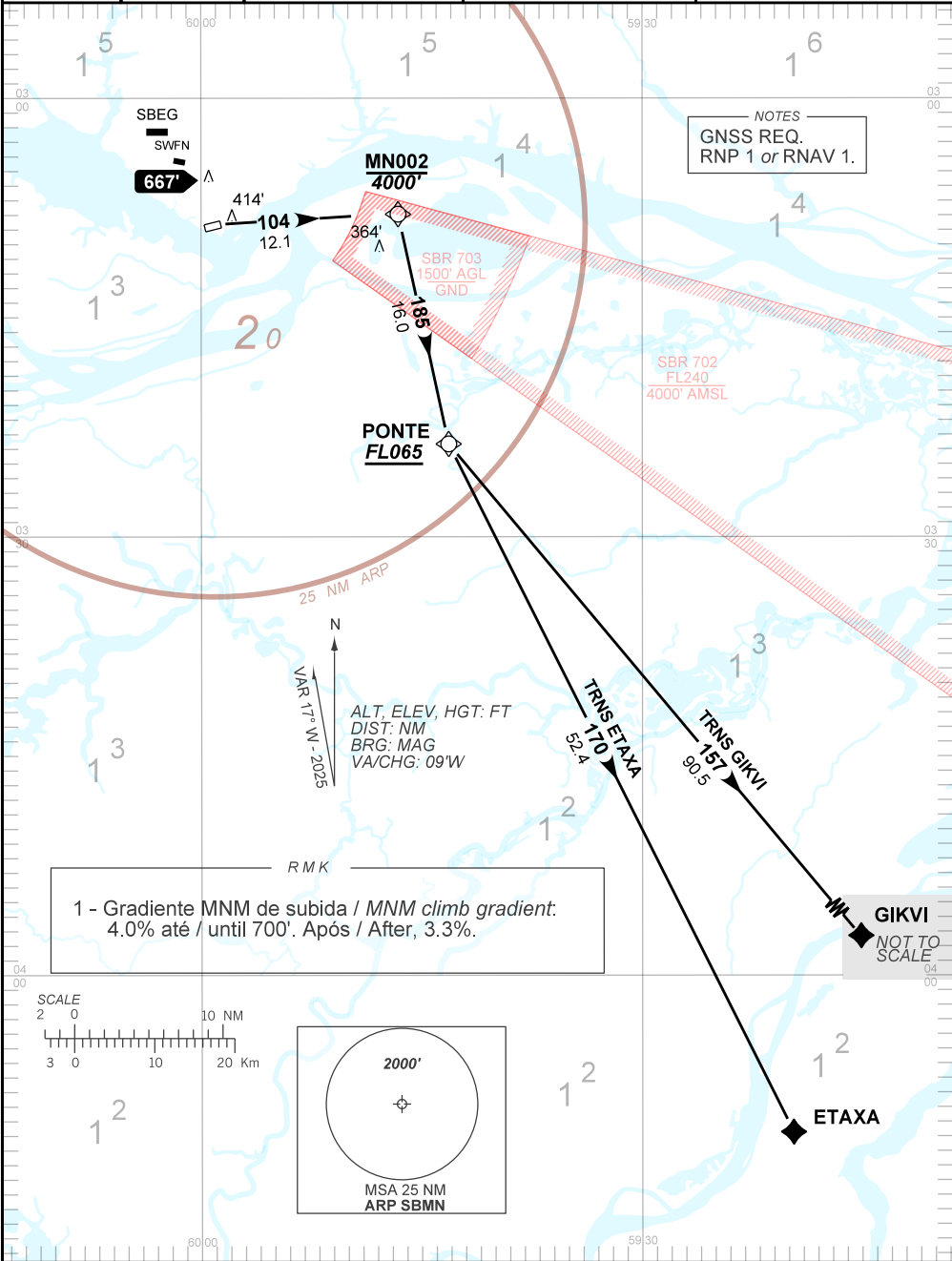
AD ELEV: 257'

RNAV PONTE 1A

TA 5000'	ATIS NIL	TWR PONTA PELADA 118.60	APP MANAUS 119.25 119.70 120.40 129.55 129.80	ACC AMAZÔNICO 134.70 126.10 134.25 127.00 125.40 125.80
----------	-------------	----------------------------	---	---

DEPARTAMENTO DE CONTROLE DO ESPAÇO AÉREO

CHANGES: NEW CHART.



NOTES
GNSS REQ.
RNP 1 or RNAV 1.

RMK
1 - Gradiente MNM de subida / MNM climb gradient:
4.0% até / until 700'. Após / After, 3.3%.

GIKVI
NOT TO SCALE

