

**INSTRUMENT APPROACH
CHART (IAC)**

PIRASSUNUNGA / Campo Fontenelle, MIL (SBYS)

VOR D RWY 20C

AD ELEV: 1976'

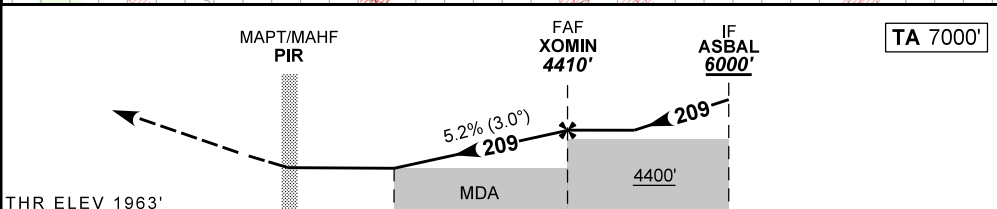
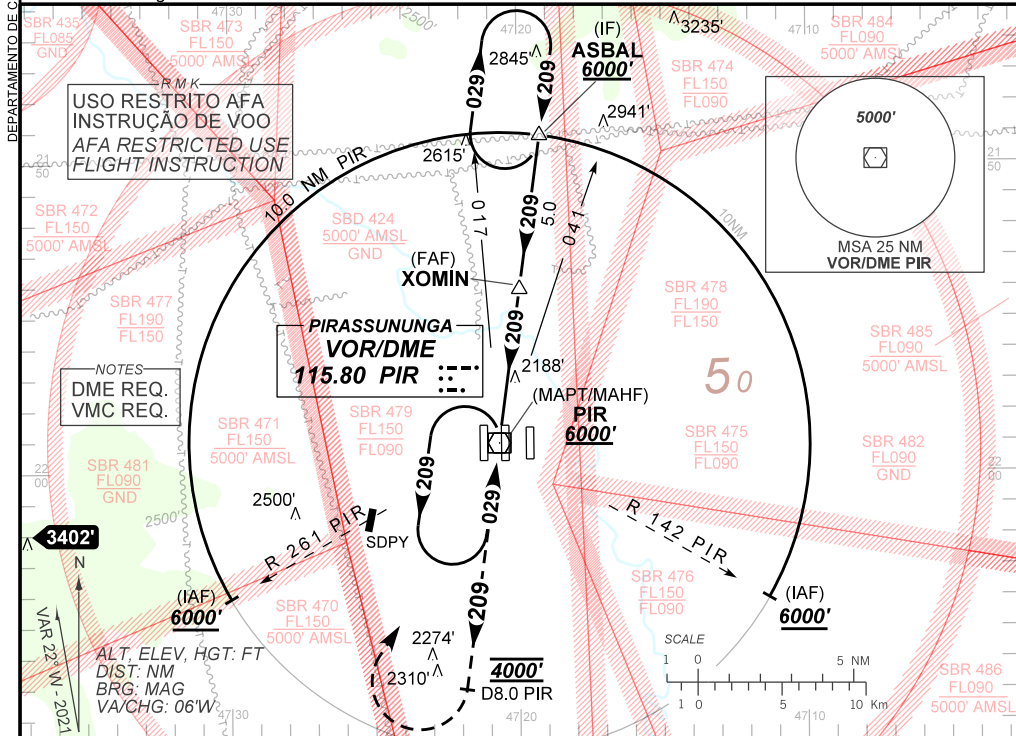
**USO EXCLUSIVO ACFT MILITARES
MILITARY ACFT ONLY**

(CAT A, B)

ATIS 127.70	APP ACADEMIA 120.10 122.40 122.80 135.45 124.90			TWR ACADEMIA 118.30	GND C ACADEMIA 121.90
VOR/DME PIR 115.80 MHz	FINAL CRS 209°	FAF: 4410'	N/A		VOR MDA / (OCH): 4000' / (2040')

APCH Perdida: Subir para **6000'**. Manter **4000'** na RDL **209** VOR PIR até 8NM. Após, curvar à DIREITA direto VOR PIR para espera.

Missed APCH: Climb to **6000'**. Maintain **4000'** on **209** RDL PIR VOR until 8NM. After, turn **RIGHT** direct PIR VOR for holding.



THR ELEV 1963'	0.0	3.1	4.4	9.4	TO THR 20C (NM)
	0.6	3.7	5.0	10.0	TO PIR DME (NM)

RWY 20C	3.1	4.0	XOMIN			Ground Speed (KT)	090	110	130	150	170	190
ALT	4000	4283	4410			FPM	500	600	700		NA	
(HGT)	2040	2320	2447			FAF-MAPT	NA					

STRAIGHT-IN	CAT	A	B	C	D	E	
	MDA / (OCH)	4000' / (2040')			NA		
VOR	ALS/NO ALS/ RVR ALS (m)	NIL / 5000 / NIL			NA		
	MDA / (OCH)	NA					
CIRCLING	VIS (m)	NA					

AIRAC AMDT 2605A1 14 MAY 26

USO EXCLUSIVO ACFT MILITARES / MILITARY ACFT ONLY

**SBYS_IAC_01E 1/1
IAC VOR D RWY 20C**