

**INSTRUMENT APPROACH
CHART (IAC)**

SANTA MARIA / Santa Maria (SBSM)

**USO EXCLUSIVO ACFT MILITARES
MILITARY ACFT ONLY**

VOR Y RWY 11

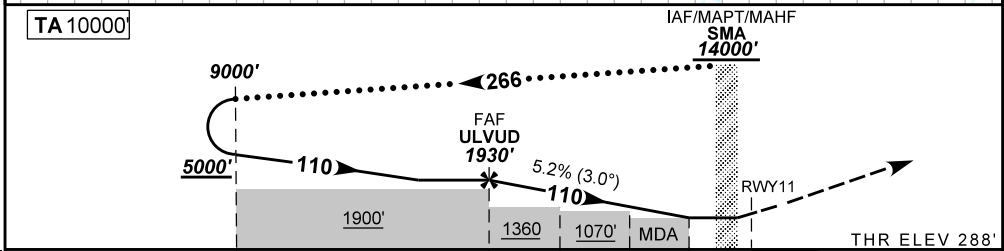
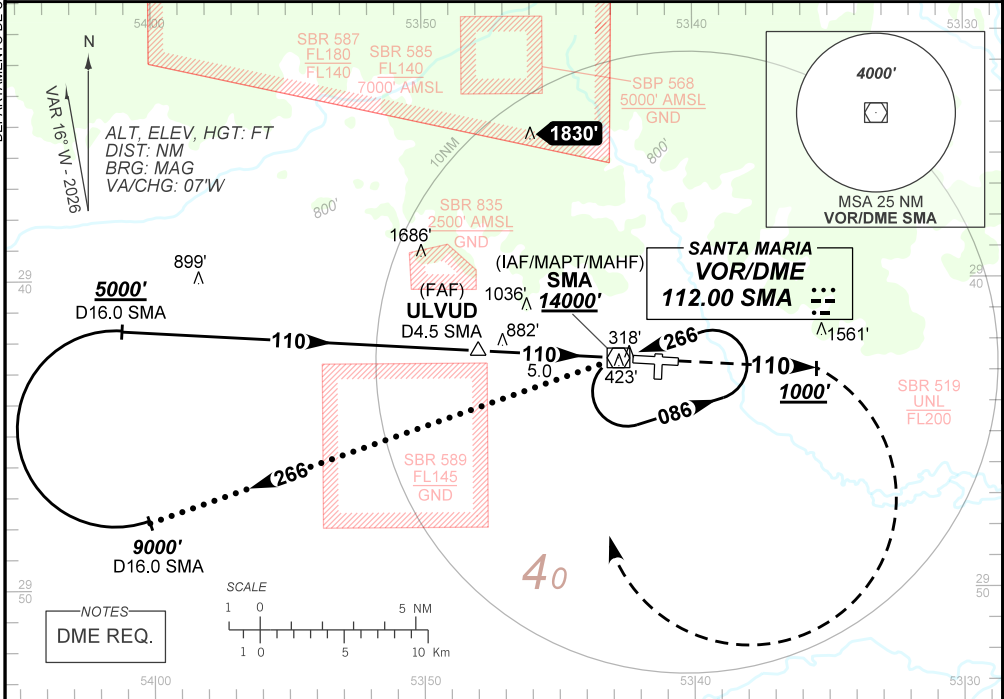
AD ELEV: 289'

ATIS 127.75	APP SANTA MARIA 118.30 119.35 121.35	TWR SANTA MARIA 118.30 118.85	GNDC NIL
-----------------------	--	---	--------------------

VOR/DME SMA 112.00 MHz	FINAL CRS 110°	FAF: 1930'	N/A	VOR MDA / (OCH): 760' / (480')
----------------------------------	--------------------------	----------------------	-----	--

APCH Perdida: Subir para **14000'**. Manter RDL **110** do VOR SMA até **1000'**. Após, curvar à DIREITA direto VOR SMA para espera.
Missed APCH: Climb to **14000'**. Maintain **110** RDL SMA VOR until **1000'**. After, turn RIGHT direct SMA VOR for holding.

DEPARTAMENTO DE CONTROLE DO ESPAÇO AÉREO



TO THR 11 (NM)	16.5	5.0	3.2	2.3	1.3	0.5	0.0		
TO SMA (DME)	16.0	4.5	2.7	1.8	0.8	0.0			

	ULVUD	4.0	3.2	2.3	1.3	RWY11	Ground Speed (KT)	090	110	130	150	170	190
	1930	1612	1363	1070	760	ALT	FPM	500	600	700	800	900	1000
	1642	1324	1075	782	480	(HGT)	FAF-MAPT	NA					

STRAIGHT-IN	CAT	A	B	C	D	E
	MDA / (OCH)	760' / (480')				
VOR	ALS/NO ALS/ RVR ALS (m)	800 / 1600 / 700			1500 / 2200 / 1400	
	MDA / (OCH)	NA				
CIRCLING	VIS (m)	NA				

CHANGES: EAC, OCH, PROC, SDF, VAR.

AIRAC AMDT 2603A1 19 MAR 26

SBSM_IAC_00N/11
IAC VOR Y RWY 11

USO EXCLUSIVO ACFT MILITARES / MILITARY ACFT ONLY