

INSTRUMENT APPROACH
CHART (IAC)

RIO DE JANEIRO / Santa Cruz, MIL (SBSC)

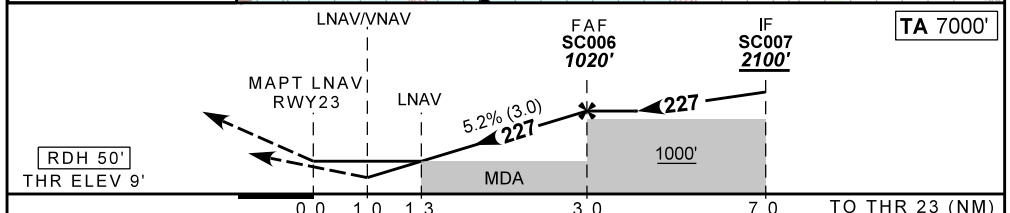
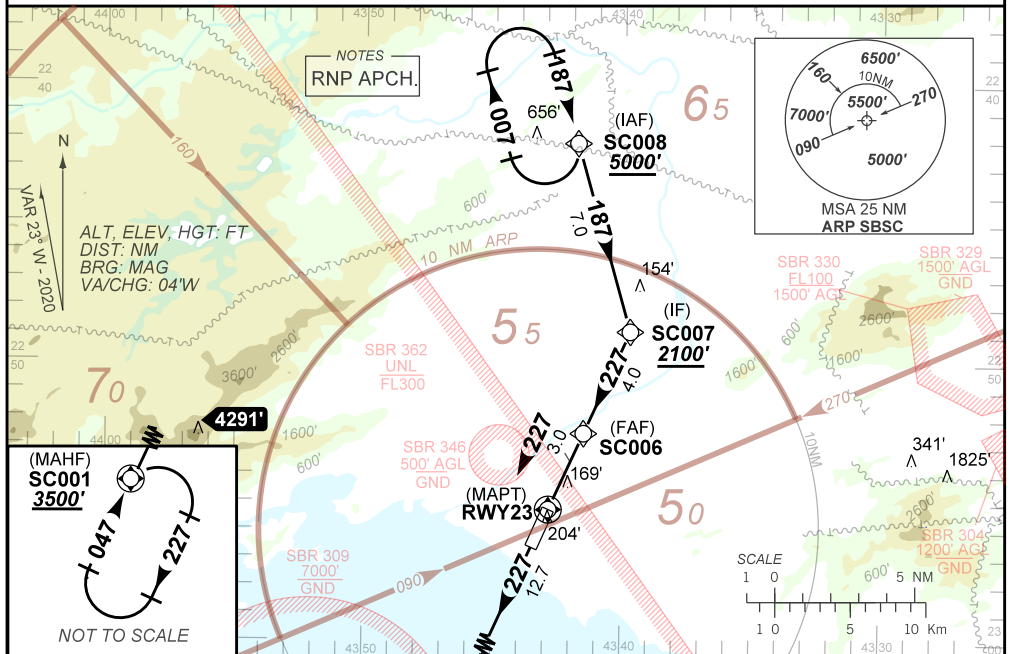
AD ELEV: 10'

RNP Z RWY 23

ATIS NIL	133.70 132.50 124.95 134.95	APP RIO 134.40 121.25 119.00 120.55 129.80 125.95	TWR SANTA CRUZ 118.80 122.90	GNDC SANTA CRUZ 121.80
N/A	FINAL CRS 227°	FAF: 1020'	LNAV/VNAV DA / (OCH): 384' / (375')	LNAV MDA / (OCH): 460' / (450')

APCH Perdida: Subir para **3500'**, gradiente MNM de subida 4.0%. Manter rumo **227** até SC001 para espera.
Missed APCH: Climb to **3500'**, MNM climb gradient 4.0%. Maintain course **227** up to SC001 for holding.

RMK: Para sistemas BARO-VNAV não compensados, procedimento LNAV/VNAV não autorizado abaixo de -20°C ou acima de 50°C.
For uncompensated systems BARO-VNAV, LNAV/VNAV procedure not authorized below -20°C or above 50°C.



RWY23	1.3	2.0	SC006							
ALT	460	697	1020							
(HGT)	450	688	1011							

STRAIGHT-IN	CAT	A	B	C	D	E
	DA / (OCH)	384' / (375')				NA
LNAV/VNAV	ALS/NO ALS / RVR ALS (m)	NIL / 1700 / NIL				NA
	MDA / (OCH)	460' / (450')				
LNAV	ALS/NO ALS / RVR ALS (m)	NIL / 1700 / NIL		NIL / 2100 / NIL		
	MDA / (OCH)	NA				
CIRCLING	MDA / (OCH)	NA				
	VIS (m)	NA				

CHANGES: EAC, IDENT, FREQ, LAYOUT