

INSTRUMENT APPROACH CHART (IAC)

RIO DE JANEIRO / Galeão - Antônio Carlos Jobim, INTL (SBGL)

AD ELEV: 28'

VOR Y RWY 15

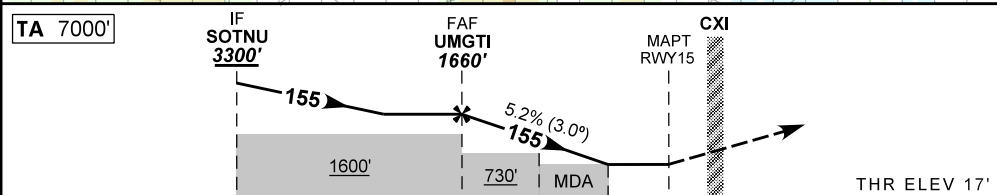
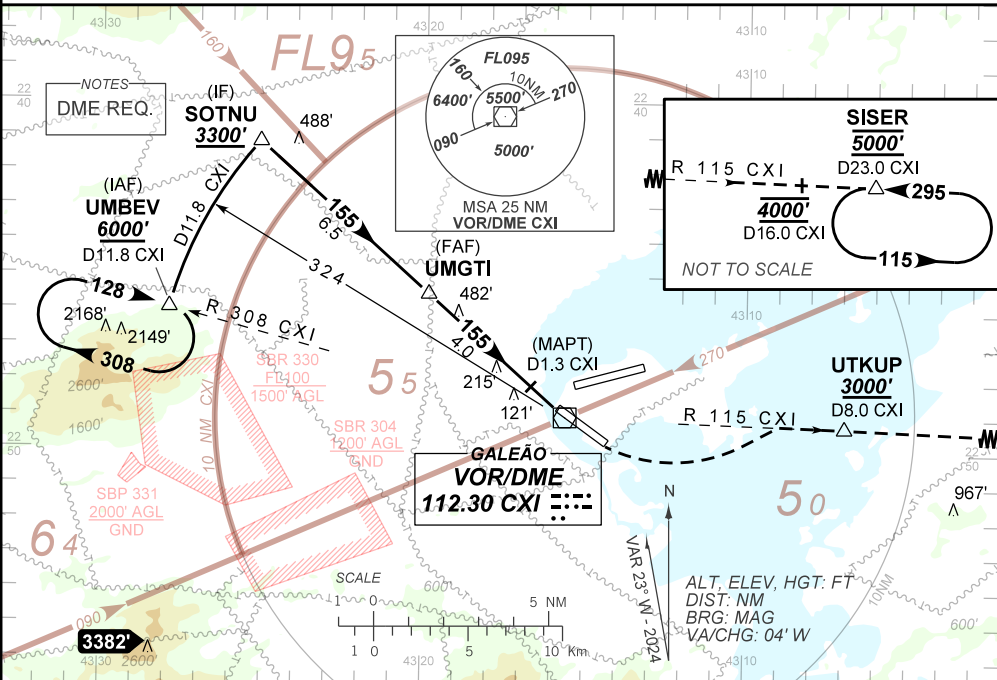
D-ATIS 127.60	129.80 APP RPT 124.95 134.95 125.95 128.90 119.35	TWR GALEÃO 118.00 118.20	GNDC GALEÃO 121.65 128.35
VOR CXI 112.30 MHZ	FINAL CRS 155°	FAF: 1660'	VOR/DME MDA / (OCH): 500' / (490')

APCH Perdida: Subir para **5000'**, gradiente MNM 5%. Curvar à ESQUERDA RDL **115** VOR CXI até UTKUP. Após, manter RDL **115** VOR CXI até SISER para espera.

Missed APCH: Climb to **5000'**, MNM gradient 5%. Turn LEFT RDL **115** CXI VOR until UTKUP. Then, maintain RDL **115** CXI VOR until SISER for holding.

RMK: Se ativado EAC SBR330 procedimento indisponível. If EAC SBR330 is active, procedure not available.

DEPARTAMENTO DE CONTROLE DO ESPAÇO AÉREO



TO THR 15 (DME)	11.5	5.0	2.1	1.4	1.0	0.0
TO CXI (DME)	11.8	5.3	2.4	1.7	1.3	0.3
	UMGTI	4.0	3.0	2.1	1.4	RWY15
	1660	1341	1022	738	500	ALT
	1643	1324	1005	721	490	(HGT)
						Ground Speed (KT)
						090
						110
						130
						150
						170
						190
						FPM
						500
						600
						700
						800
						900
						1000
						FAF-MAPT
						NA

STRAIGHT-IN	CAT	A	B	C	D	E
VOR	MDA / (OCH)	500' / (490')				
	ALS/NO ALS/RVR ALS (m)	700 / 1600 / NIL				
CIRCLING	MDA / (OCH)	1400 / 2300 / NIL				
	VIS (m)	NA				

CHANGES: MNM OPR. MSA, OBST. VAR.