

**INSTRUMENT APPROACH
CHART (IAC)**

GAVIÃO PEIXOTO / EMBRAER - Unidade Gavião Peixoto (SBGP)

**USO EXCLUSIVO ENSAIO EM VOO
FLIGHT TEST ONLY**

ILS Y RWY 20L

AD ELEV: 1998'

ATIS NIL		APP ACADEMIA 120.10 122.40		AFIS GAVIÃO 118.95	
--------------------	--	--------------------------------------	--	------------------------------	--

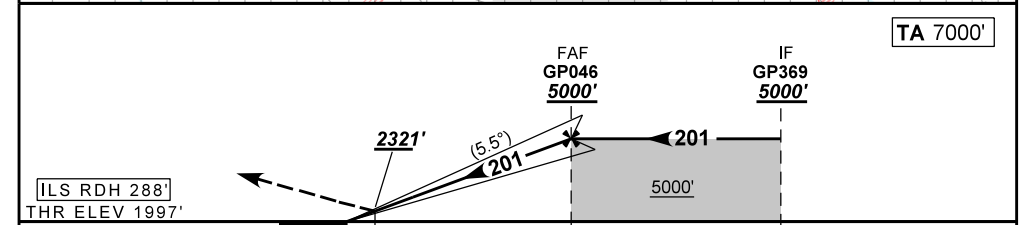
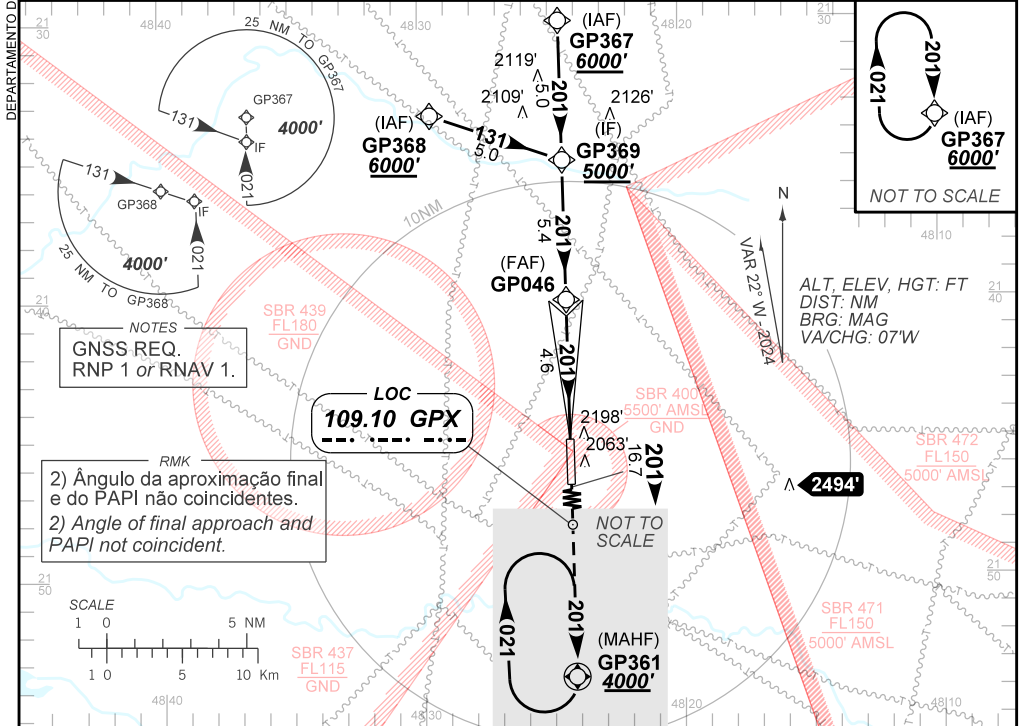
LOC GPX 109.10 MHz	FINAL CRS 201°	FAF: 5000'	CAT I DA / (OCH): 2321' (324')	N/A
------------------------------	--------------------------	----------------------	--	------------

APCH Perdida: Subir para **4000'**. Manter rumo **201** até GP361 para espera.

Missed APCH: Climb to **4000'**. Maintain course **201** up to GP361 for holding.

RMK: 1) Procedimento de uso exclusivo da EMBRAER para ensaio em voo. Compulsório voo diurno sob VFR.

1) Procedure of exclusive use by EMBRAER for flight test. Compulsory daylight flight under VFR.



RWY20L	NIL	Ground Speed (KT)	NIL
ALT	NIL	FPM	NIL
(HGT)	NIL	FAF-MAPT	NIL

STRAIGHT-IN	CAT	A	B	C	D	E
	DA / (OCH)	2321' / (324')				
CIRCLING	MDA / (OCH)	NIL / 1500' / NIL				
	VIS (m)	NA				

AIRAC AMDT 2413A1 26 DEC 24

USO EXCLUSIVO ENSAIO EM VOO / FLIGHT TEST ONLY

**SBGP_IAC_00E 1/1
IAC ILS Y RWY 20L**

CHANGES: HDG, VAR.