

STANDARD ARRIVAL CHART INSTRUMENT (STAR)

RIO DE JANEIRO / Galeão - Antônio Carlos Jobim, INTL (SBGL)

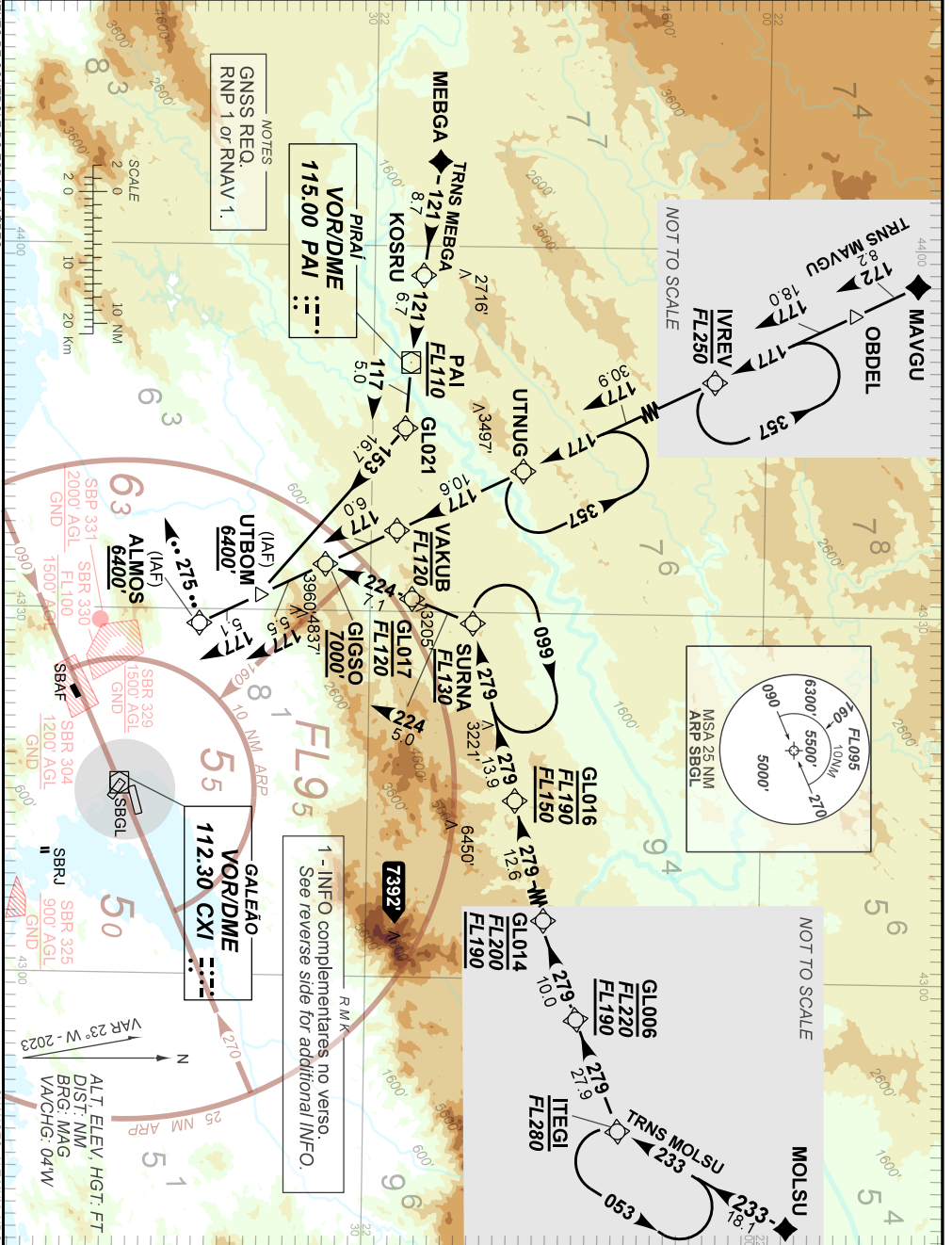
RWY 10/15

AD ELEV: 28'

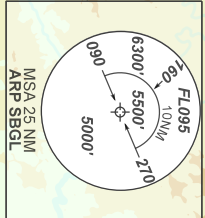
RNAV MEBGA 1A - UTBOM 2A

TA 7000'	D-ATIS 127.60	ACC CURITIBA 124.00 125.35 133.40 133.60	APP RIO 119.35 125.95 126.20 128.90 129.80 133.30	TWR GALEÃO 118.00 118.20
-----------------	-------------------------	---	--	------------------------------------

DEPARTAMENTO DE CONTROLE DO ESPAÇO AEREO



NOTES
GNSSE REQ.
RNP 1 OR RNAV 1.
**VOR/DME
115.00 PAI**



1 - INFO complementares no verso.
See reverse side for additional INFO.

AIRAC AMDT 2505A1 15 MAY 25

SBGL_STAR_02B 1/2
STAR RNAV MEBGA 1A - UTBOM 2A RWY 10/15

CHANGES ALTM MIN. HDG.

COMMUNICATION FAILURE

RWY 10

Acionar transponder A7600, completar chegada até ALMOS e executar procedimento autorizado pelo ATC. Ou, se durante vetorização na proa 275, manter esta proa, altitude MNM 6400' até 25 NM DME CXI. Então, curvar à esquerda para interceptar aproximação final.

Set transponder A7600, complete arrival up to ALMOS and perform authorized procedure by ATC. Or, if under vectoring on heading 275, maintain this heading, MNM altitude 6400' until 25 NM CXI DME. After, turn left to intercept final approach.

RWY 15

Acionar transponder A7600, completar chegada até UTBOM e executar procedimento autorizado pelo ATC.

Set transponder A7600, complete arrival up to UTBOM and perform authorized procedure by ATC.

DEPARTAMENTO DE CONTROLE DO ESPAÇO AÉREO

CHANGES: ALT, MNM, HDG.