

**INSTRUMENT APPROACH
CHART (IAC)**

NATAL / Augusto Severo, MIL (SBNT)

AD ELEV: 171'

VOR Y RWY 12

D-ATIS 132.65	APP NATAL 119.30 119.65 120.65 129.80		TWR NATAL 118.70 122.80	GNDC NATAL 121.90
-------------------------	-------------------------------------------------	--	-----------------------------------	-----------------------------

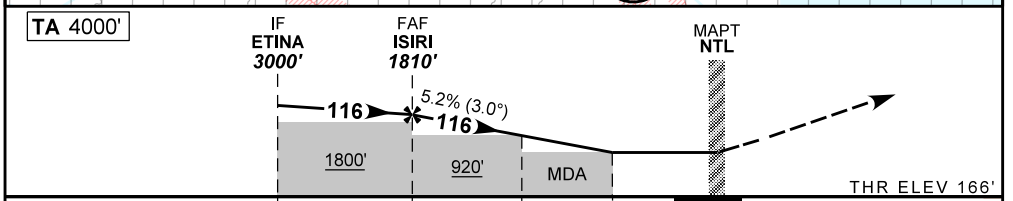
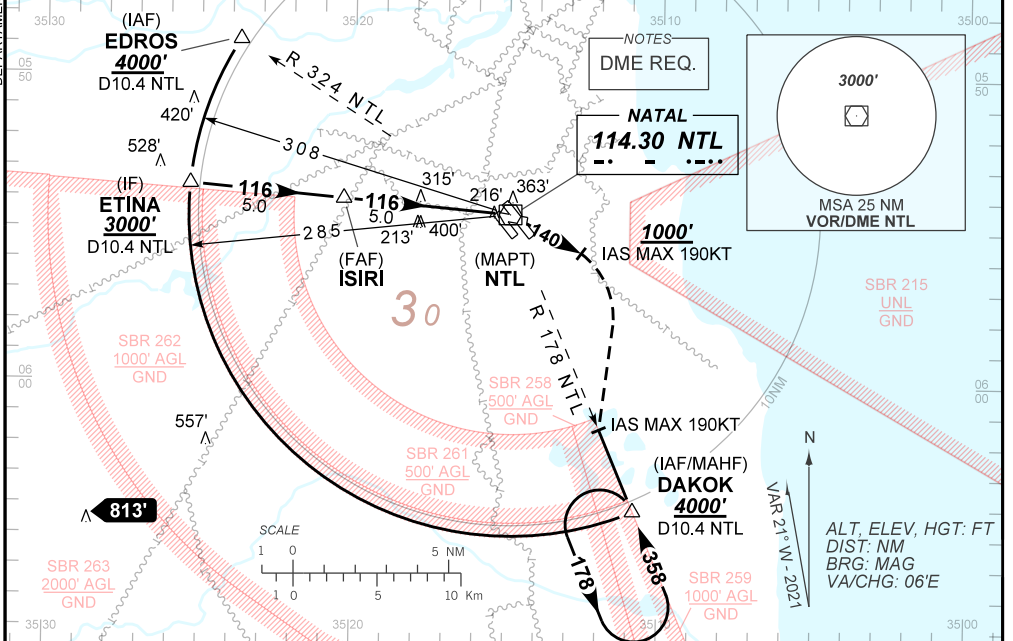
VOR NTL 114.30 MHz	FINAL CRS 116°	FAF: 1810'	N/A	VOR MDA / (OCH): 540' / (380')
------------------------------	--------------------------	----------------------	-----	------------------------------------------

APCH Perdida: Subir para **4000'**. Manter a RDL **140'** do VOR NTL até **1000'**. Após, curvar à DIREITA para interceptar RDL **178'** do VOR NTL até DAKOK para espera.

Missed APCH: Climb to **4000'**. Maintain **140'** RDL NTL VOR until **1000'**. After, turn RIGHT to intercept **178'** RDL NTL VOR until DAKOK for holding.

RMK: NIL.

DEPARTAMENTO DE CONTROLE DO ESPAÇO AÉREO



TO THR 12 (NM)	10.0	5.0	2.2	1.0	0.0
TO NTL (DME)	10.4	5.4	2.6	1.4	0.4

	ISIRI	4.0	3.0	2.2	1.0	RWY12	Ground Speed (KT)	090	110	130	150	170	190
	1810	1491	1172	928	540	ALT	FPM	500	600	700	800	900	1000
	1644	1325	1006	762	380	(HGT)	FAF-MAPT	NA					

STRAIGHT-IN	CAT	A	B	C	D	E
	MDA / (OCH)	540' / (380')				
VOR	ALS/NO ALS/ RVR ALS (m)	NIL / 1600 / NIL			NIL / 1700 / NIL	
	MDA / (OCH)	NA				
CIRCLING	MDA / (OCH)	NA				
	VIS (m)	NA				

CHANGES: LAYOUT, MDA, PROC, VAR.