

INSTRUMENT APPROACH
CHART (IAC)

GAVIÃO PEIXOTO / EMBRAER, Unidade Gavião Peixoto (SBGP)

AD ELEV: 1998'

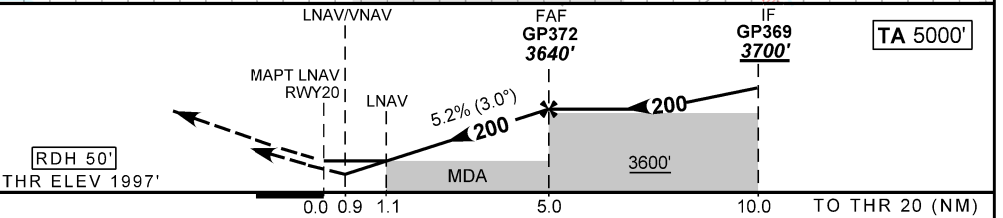
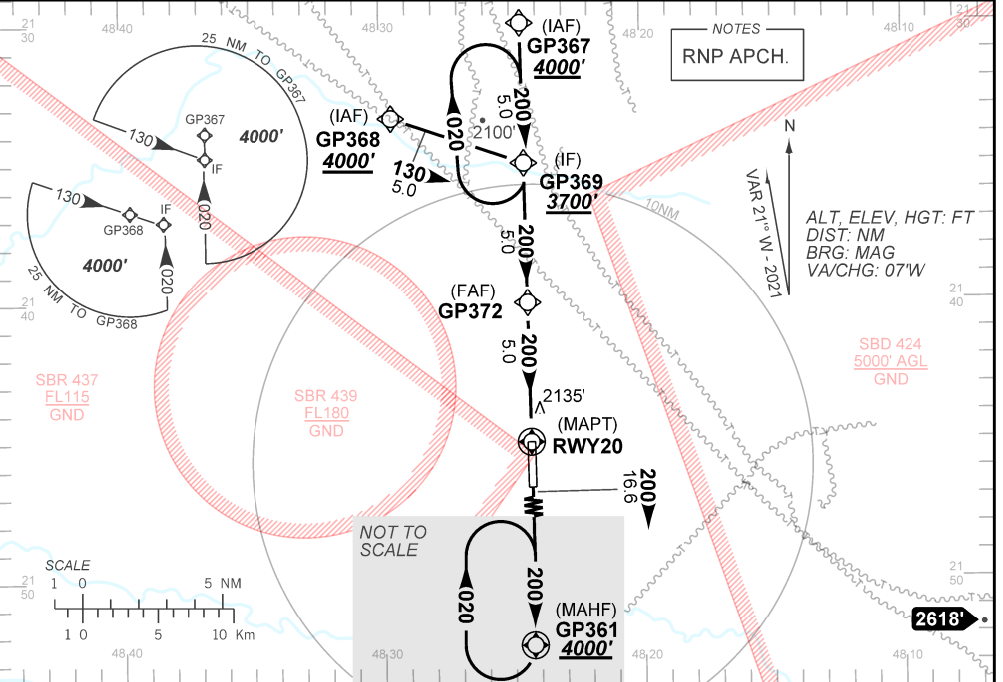
RNP U RWY 20

ATIS NIL	APP NIL	AFIS GAVIÃO 118.95
TEMP LNAV/VNAV MIN -10°C / MAX 50°C	FINAL CRS 200°	FAF: 3640'
		LNAV/VNAV DA / (OCH): 2340' / (350')
		LNAV MDA / (OCH): 2400' / (410')

APCH Perdida: Subir para **4000'** no rumo **200** até GP361 para espera.
Missed APCH: Climb to **4000'** on course **200** until GP361 for holding.

RMK: Espera em GP369 a 3700' ou acima.

DEPARTAMENTO DE CONTROLE DO ESPAÇO AÉREO



RWY20	0.9	1.1	2.0	3.0	4.0	GP372	Ground Speed (KT)	090	110	130	150	170	190
ALT	2340	2400	2685	3003	3322	3640	FPM	500	600	700	800	900	NA
(HGT)	350	410	687	1005	1324	1642	FAF-MAPT	NIL					

STRAIGHT-IN	CAT	A	B	C	D	E
LNAV/VNAV	DA / (OCH)	2340' / (350')				NA
	ALS/NO ALS/ RVR ALS (m)	NIL / 1600 / NIL				
LNAV	MDA / (OCH)	2400' / (410')				
	ALS/NO ALS/ RVR ALS (m)	NIL / 1600 / NIL		NIL / 1900 / NIL		
CIRCLING	MDA / (OCH)	NA				
	VIS (m)					

CHANGES: FREC