

INSTRUMENT APPROACH
CHART (IAC)

VILHENA / Vilhena (SBVH)

USO EXCLUSIVO ACFT MILITARES
MILITARY ACFT ONLY

AD ELEV: 2018'

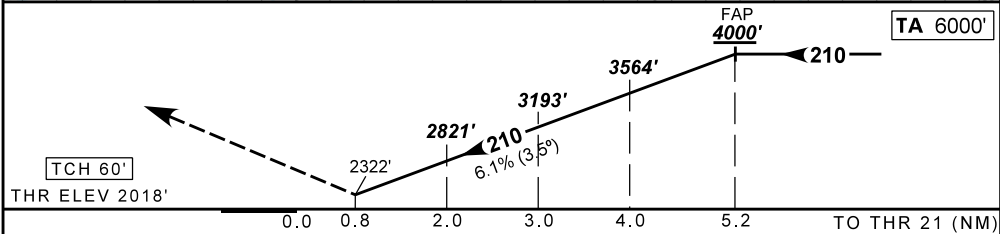
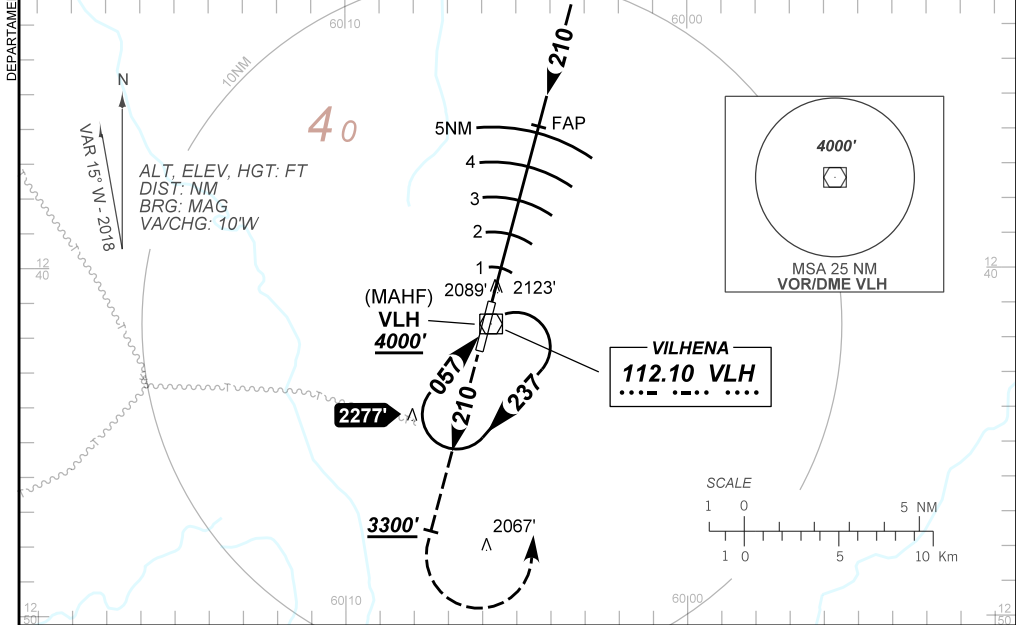
PAR RWY 21

ATIS NIL	APP VILHENA 118.05 130.10	AFIS VILHENA 125.90	PAR VILHENA 122.025 345.125	GNDC NIL
N/A	FINAL CRS 210°	FAP 4000'	PAR DA / (OCH): 2322' / (310')	N/A

APCH Perdida: Subir para 4000'. Manter a proa 210 até 3300'. Após, curvar à ESQUERDA direto VOR Vilhena para espera.

Missed APCH: Climb to 4000'. Maintain heading 210 until 3300'. Then, turn LEFT direct Vilhena VOR for holding.

RMK: 1) Altitude de início 4000'. 2) Sujeito a disponibilidade do controle PAR.
1) Inicial altitude 4000'. 2) Subject to availability of PAR control.



RWY21	NIL	KT	090	110	130	150	170	190
ALT	NIL	FPM	500	600	700	800	900	1000
(HGT)	NIL	FAF-MAPT	NA					

STRAIGHT-IN	CAT	A	B	C	D	E
PAR	DA / (OCH)	2322' / (310')				
	ALS/INO ALS/ RVR ALS (m)	NIL / 1400 / NIL				
CIRCLING	MDA / (OCH)	NA				
	VIS (m)	NA				

CHANGES: FREQ. LAYOUT.

AIRAC AMDT 2203A1 24 MAR 22

USO EXCLUSIVO ACFT MILITARES / MILITARY ACFT ONLY

SBVH_IAC_00H 1/1
IAC PAR RWY 21