

INSTRUMENT APPROACH
CHART (IAC)

CHAPECÓ/ Serafin Enoss Bertaso (SBCH)

AD ELEV: 2154'

RNAV (GNSS) RWY 11

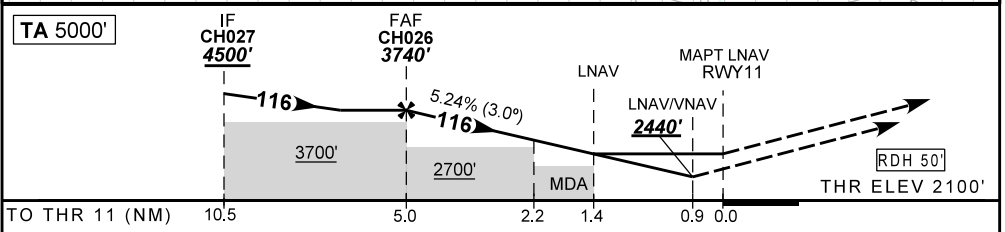
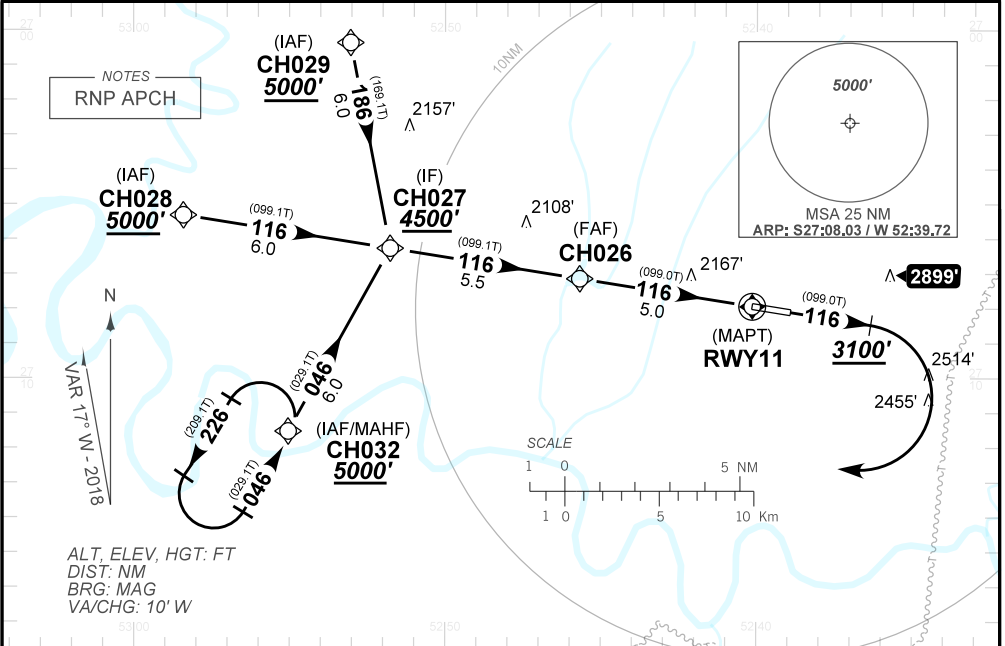
ATIS NIL	APP NIL	AFIS CHAPECÓ 130.85	GNDC NIL
N/A	FINAL CRS 116°	FAF 3740'	LNAV / VNAV DA / (OCH): 2440' / (340')
		LNAV / VNAV MDA / (OCH): 2580' / (480')	

APCH Perdida: Subir para **5000'**. Manter proa **116** até cruzar **3100'**. Curvar à DIREITA direto CH032 para espera.

Missed APCH: Climb to **5000'**. Maintain course **116** until passing **3100'**. Turn RIGHT direct CH032 for holding.

RMK: 1) Para sistemas não compensados, procedimentos LNAV/VNAV NÃO AUTORIZADO abaixo de -10°C ou acima de 48°C.

1) For uncompensated systems, LNAV/VNAV NOT AUTHORIZED below -10°C or above 48°C.



	CH026	4.0	3.0	2.2	1.4	RWY11	KT	090	110	130	150	170	190
	3740	3424	3106	2840	2580	ALT	FPM	500	600	700	800	900	NA
	1640	1324	1006	740	480	(HGT)	FAF-MAPT	NA					

STRAIGHT-IN	CAT	A	B	C	D	E
	DA / (OCH)	2440' / (340')				
LNAV VNAV	ALS/NO ALS/ RVR ALS (m)	NIL / 1500 / NIL				
	MDA / (OCH)	2580' / (480')				
LNAV	ALS/NO ALS/ RVR ALS (m)	NIL / 1600 / NIL	NIL / 2200 / NIL			
	MDA / (OCH)	NA				
CIRCLING	MDA / (OCH)	NA				
	VIS (m)					

CHANGES: PROC. IDENT. LAYOUT.