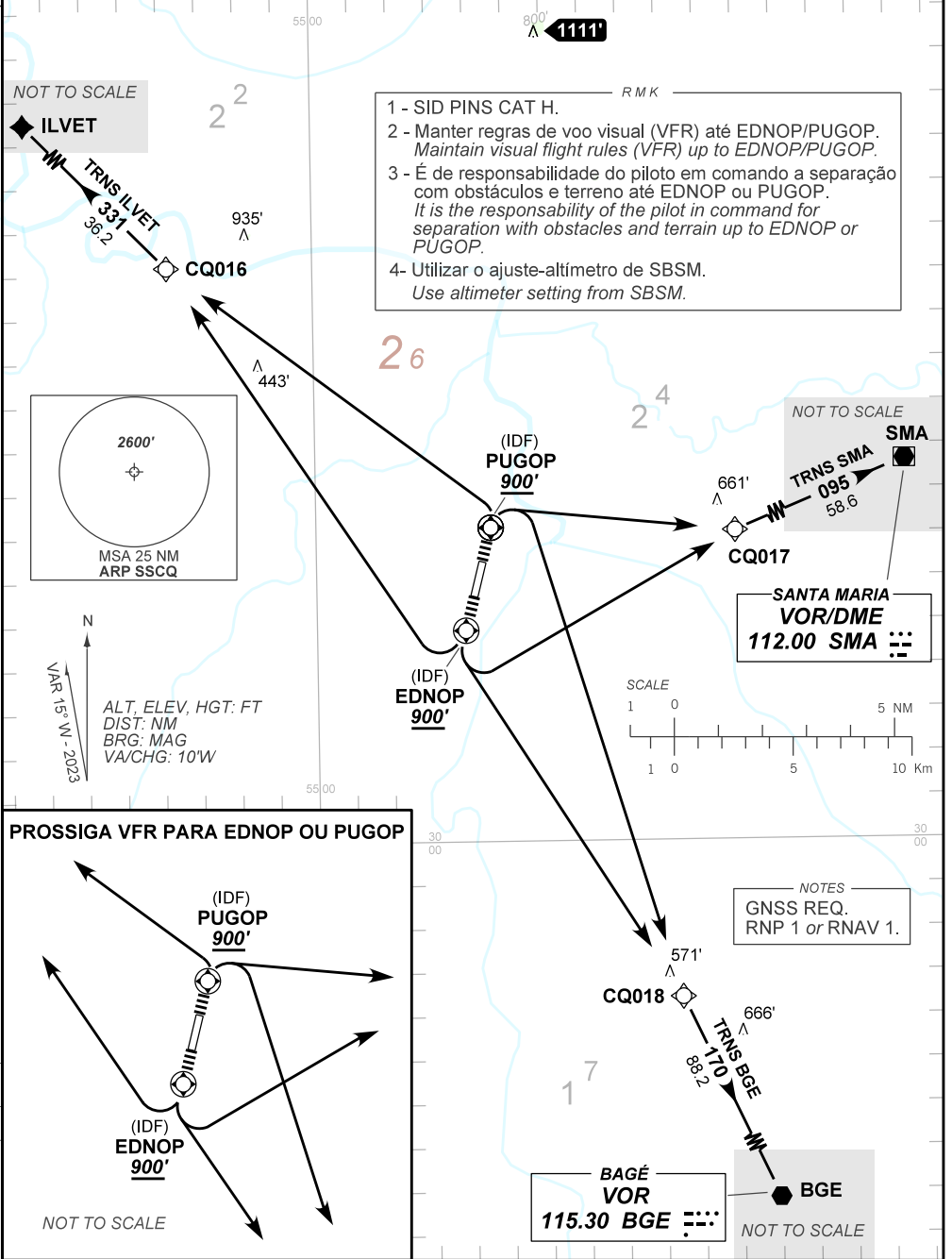


AD ELEV: 281'

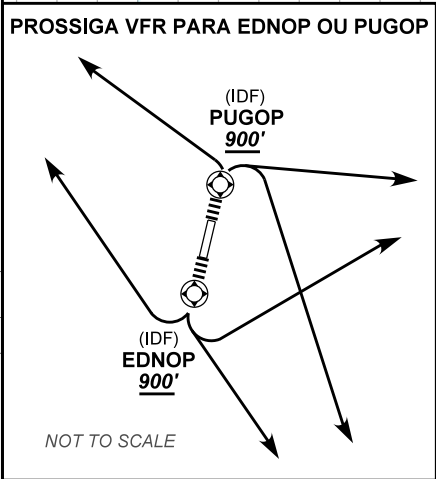
TA 5000'	ATIS SANTA MARIA 127.75	TWR NIL	APP SANTA MARIA 119.35 121.35	ACC CURITIBA 123.725 135.90
----------	----------------------------	------------	----------------------------------	--------------------------------

DEPARTAMENTO DE CONTROLE DO ESPAÇO AÉREO

CHANGES: AD, ELEV, ATIS, IDENT, THR, ELEV.



- 1 - SID PINS CAT H.
- 2 - Manter regras de voo visual (VFR) até EDNOP/PUGOP.  
*Maintain visual flight rules (VFR) up to EDNOP/PUGOP.*
- 3 - É de responsabilidade do piloto em comando a separação com obstáculos e terreno até EDNOP ou PUGOP.  
*It is the responsibility of the pilot in command for separation with obstacles and terrain up to EDNOP or PUGOP.*
- 4 - Utilizar o ajuste-altímetro de SBSM.  
*Use altimeter setting from SBSM.*



NOTES  
GNSS REQ.  
RNP 1 or RNAV 1.

BAGE  
VOR  
115.30 BGE

NOT TO SCALE