

**INSTRUMENT APPROACH
CHART (IAC)**

CURITIBA / Afonso Pena, INTL (SBCT)

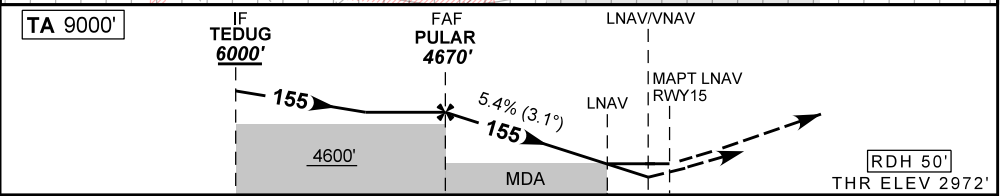
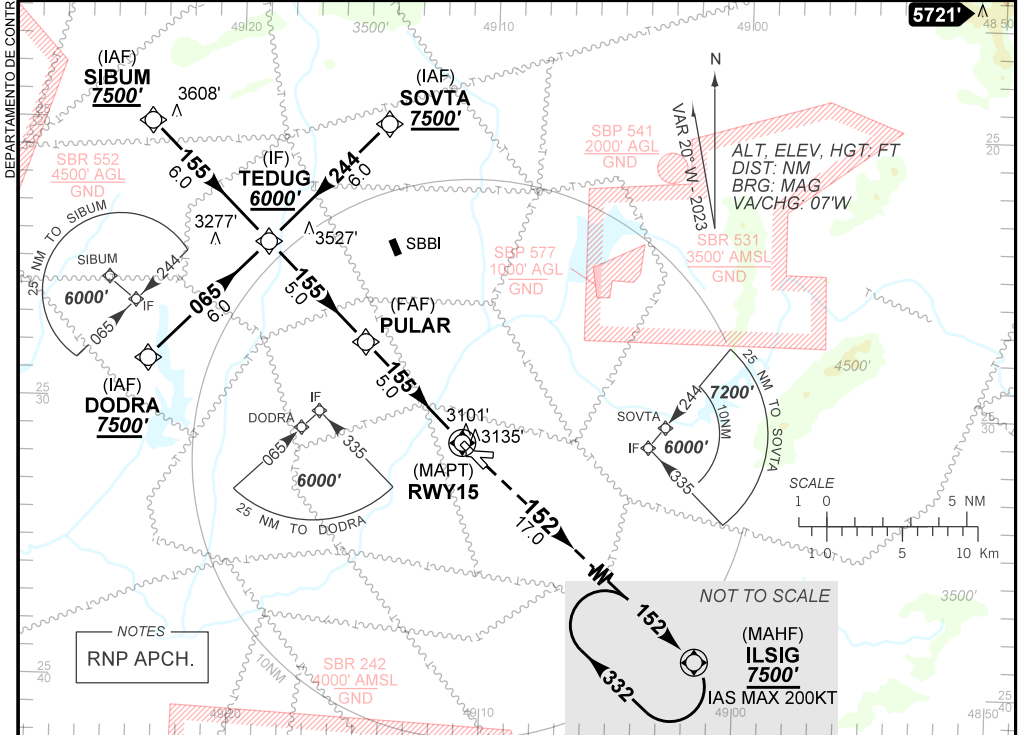
AD ELEV: 2989'

RNP Z RWY 15

D-ATIS 127.80	APP CURITIBA 119.95 119.70 120.65 120.95 129.55 133.15			TWR CURITIBA 118.15	GND C CURITIBA 121.90
TEMP LNAV/VNAV MIN -10°C / MAX 45°C	FINAL CRS 155°	FAF: 4670'	LNAV/VNAV DA / (OCH): 3303' / (331')	LNAV MDA / (OCH): 3390' / (420')	

APCH Perdida: Subir para **7500'**. Manter rumo **152** até ILSIG para espera.

Missed Approach: Climb to **7500'**. Maintain course **152** until ILSIG for holding.



TO THR 15 (NM) 10.0 5.0 1.1 0.9 0.0

	PULAR	4.0	3.0	2.0	1.1	RWY15	Ground Speed (KT)	090	110	130	150	170	190
	4670	4338	4009	3680	3390	ALT	FPM	500	600	700	800	900	NA
	1698	1366	1037	708	420	(HGT)	FAF-MAPT	NA					

STRAIGHT-IN	CAT	A	B	C	D	E	
	DA / (OCH)	3303' / (331')					NA
LNAV/VNAV	ALS/NO ALS/ RVR ALS (m)	800 / 1500 / 750					
	MDA / (OCH)	3390' / (420')					
LNAV	ALS/NO ALS/ RVR ALS (m)	800 / 1600 / 750			1200 / 1900 / 1100		
	MDA / (OCH)	NA					
CIRCLING	MDA / (OCH)	NA					
	VIS (m)	NA					

CHANGES: EAC. LAYOUT.