

**INSTRUMENT APPROACH  
CHART (IAC)**

**FOZ DO IGUAÇU / Cataratas, INTL (SBFI)**

**AD ELEV: 787'**

**ILS Y or LOC Y RWY 15**

D-ATIS	APP FOZ <b>119.15 120.30</b>		TWR FOZ <b>118.80</b>	GNDC <b>NIL</b>
--------	---------------------------------	--	--------------------------	--------------------

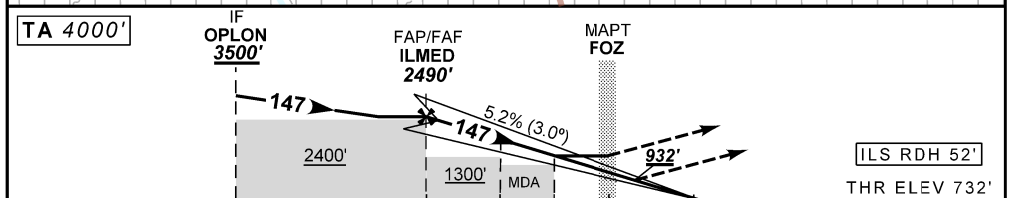
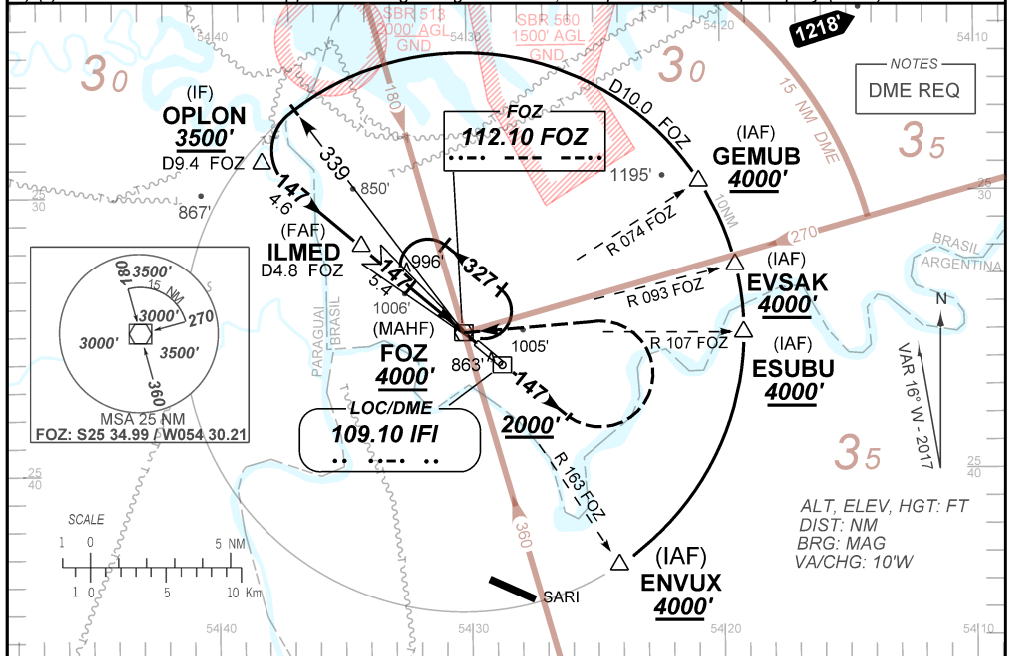
LOC IFI <b>109.10 MHz</b>	FINAL CRS <b>147°</b>	FAF <b>2490'</b>	CAT I <b>DA / (OCH): 932' / (200')</b>	LOC <b>MDA / (OCH): 1100' / (370')</b>
------------------------------	--------------------------	---------------------	-------------------------------------------	-------------------------------------------

APCH Perdida: Subir para **4000'**. Manter rumo **147°** até cruzar **2000'**. Curvar à ESQUERDA direto VOR FOZ para espera.

Missed APCH: Climb to **4000'**. Maintain course **147°** until passing **2000'**. Turn LEFT direct to FOZ VOR for holding.

RMK: 1) (\*) VIS RVR ALS 550m para aproximação utilizando Diretor de Voo, Piloto Automático ou Head-Up Display (HUD).

1) (\*) RVR VIS ALS 550m for approach using a Flight Director, Autopilot or Head-Up Display (HUD).



TO THR 15 (NM)	10.0	5.4	2.9	1.0	0.6	0.0
TO IFI (DME)	11.2	6.6	4.1	2.2	1.8	1.2

ILMED	4.0	3.0	2.0	1.0	0.5	RWY15
2490	2058	1740	1421	1100	932	ALT
1758	1326	1007	689	370	200	(HGT)

STRAIGHT-IN	CAT	A	B	C	D	E
CAT I	DA / (OCH)	932' / (200')				
	ALS/NO ALS/ RVR ALS (m)	800 / 1200 / 700*				
LOC	MDA / (OCH)	1100' / (370')				
	ALS/NO ALS/ RVR ALS (m)	800 / 1600 / NIL		1000 / 1700 / NIL		
CIRCLING	MDA / (OCH)	NA				
	VIS (m)	NA				

CHANGES: EAC, FREQ, RWY.