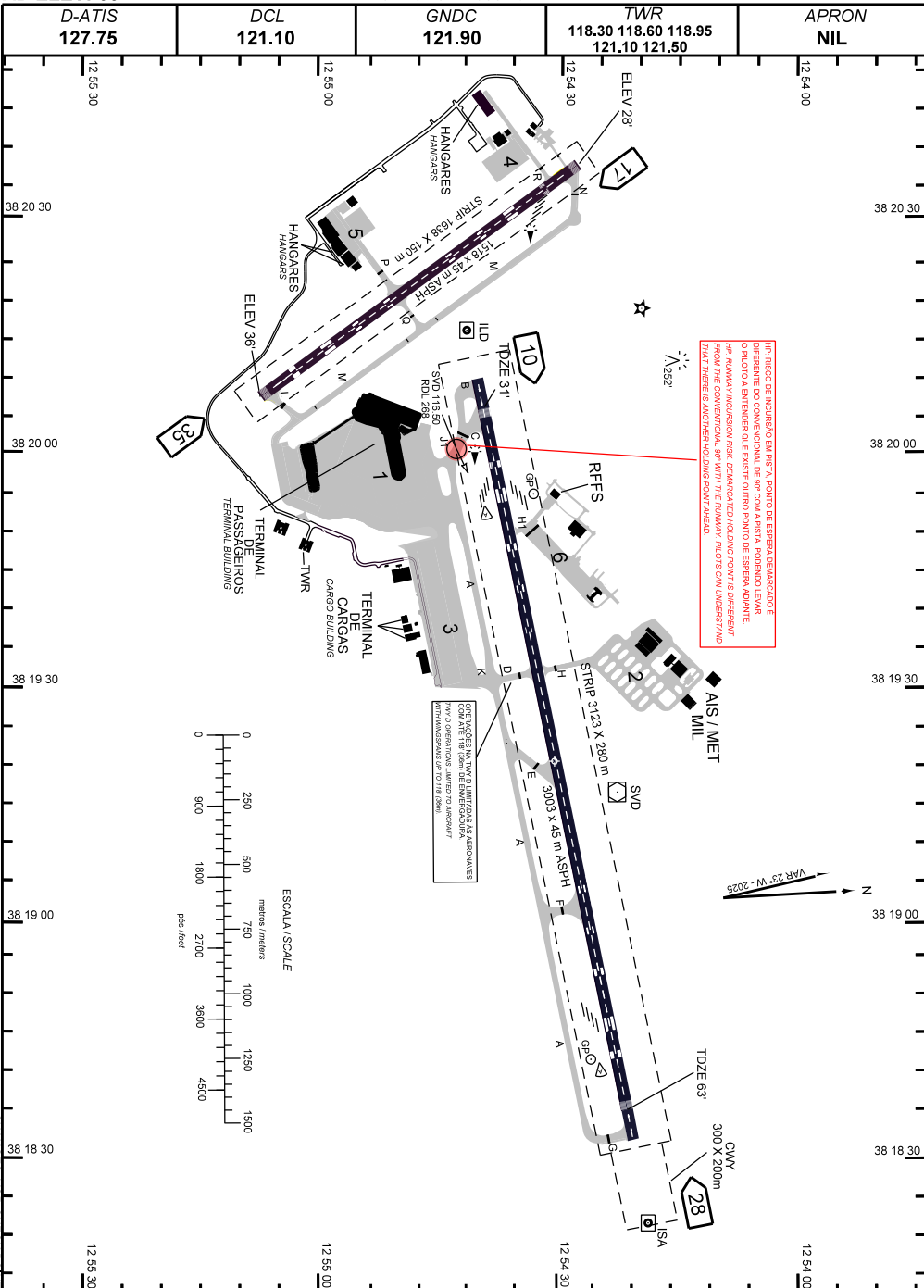


AD ELEV: 66'

ARP S12 54 31 W038 19 21



ADC - SBSV: INFORMAÇÕES COMPLEMENTARES / COMPLEMENTARY INFORMATION

CARACTERÍSTICAS FÍSICAS / PHYSICAL CHARACTERISTICS											
PISTA RUNWAY				DIMENSÕES(m) DIMENSIONS(m)				PCN	TIPO DE SUPERFÍCIE SURFACE KIND		
RWY	BRG MAG	Tipo Type	RCD	RWY	SWY	CWY	STRIP	RWY	RWY	SWY	
a	b	c	d	e	f	g	h	j	k	l	
10	102	PA-1	4E	3003 x 45		300 x 200	3123 X 280	73/F/A/W/T	ASPH		
28	282	PA-1	4E								
17	167	NINST	4C	1518 x 45			1638 x 150	41/F/B/X/T	ASPH		
35	347	NINST	4C								

**DISTÂNCIAS DECLARADAS, AUXÍLIOS VISUAIS E COORDENADAS DAS CABECEIRAS
DECLARED DISTANCES, VISUAL AIDS AND THRESHOLD COORDINATES**

RWY	TORA(m)	TODA(m)	ASDA(m)	LDA(m)	AUXÍLIOS / AIDS	ALTURA GEOIDAL(m) GEOID HEIGHT(m)	COORDENADAS COORDINATES
10	2883	3303	2883	2763	PAPI	- 10,94m	S12 54 40 W038 20 06
28	2883	3003	2883	2763	PAPI	- 10,95m	S12 54 22 W038 18 36
17	1518	1518	1518	1518	PAPI (3.50°)	- 10,94m	S12 54 28 W038 20 37
35	1518	1518	1518	1518		- 10,94m	S12 55 08 W038 20 08

SERVIÇO DE SALVAMENTO E CONTRAINCÊNDIO / RESCUE AND FIRE FIGHTING SERVICE: RFFS REQ - 9

RWY 10 / 28

Sinalização horizontal / Marking Aids

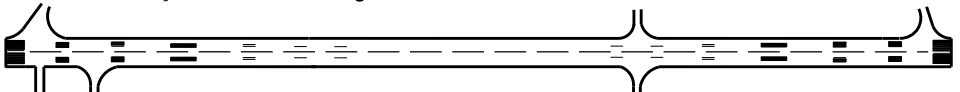


Auxílios luminosos / Lighting Aids

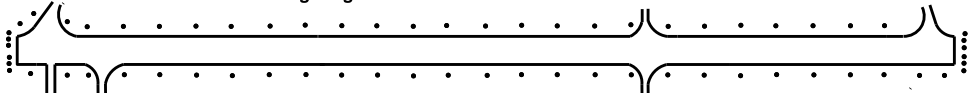


RWY 17 / 35

Sinalização horizontal / Marking Aids



Auxílios luminosos / Lighting Aids



RMK: MEHT: PAPI RWY 10 - 60FT
RWY 17 - 40FT
RWY 28 - 59 FT

CHANGES: VOR CHECK POINT