

STANDARD DEPARTURE CHART  
INSTRUMENT (SID)

GUARUJÁ / Base Aérea de Santos, MIL (SBST)

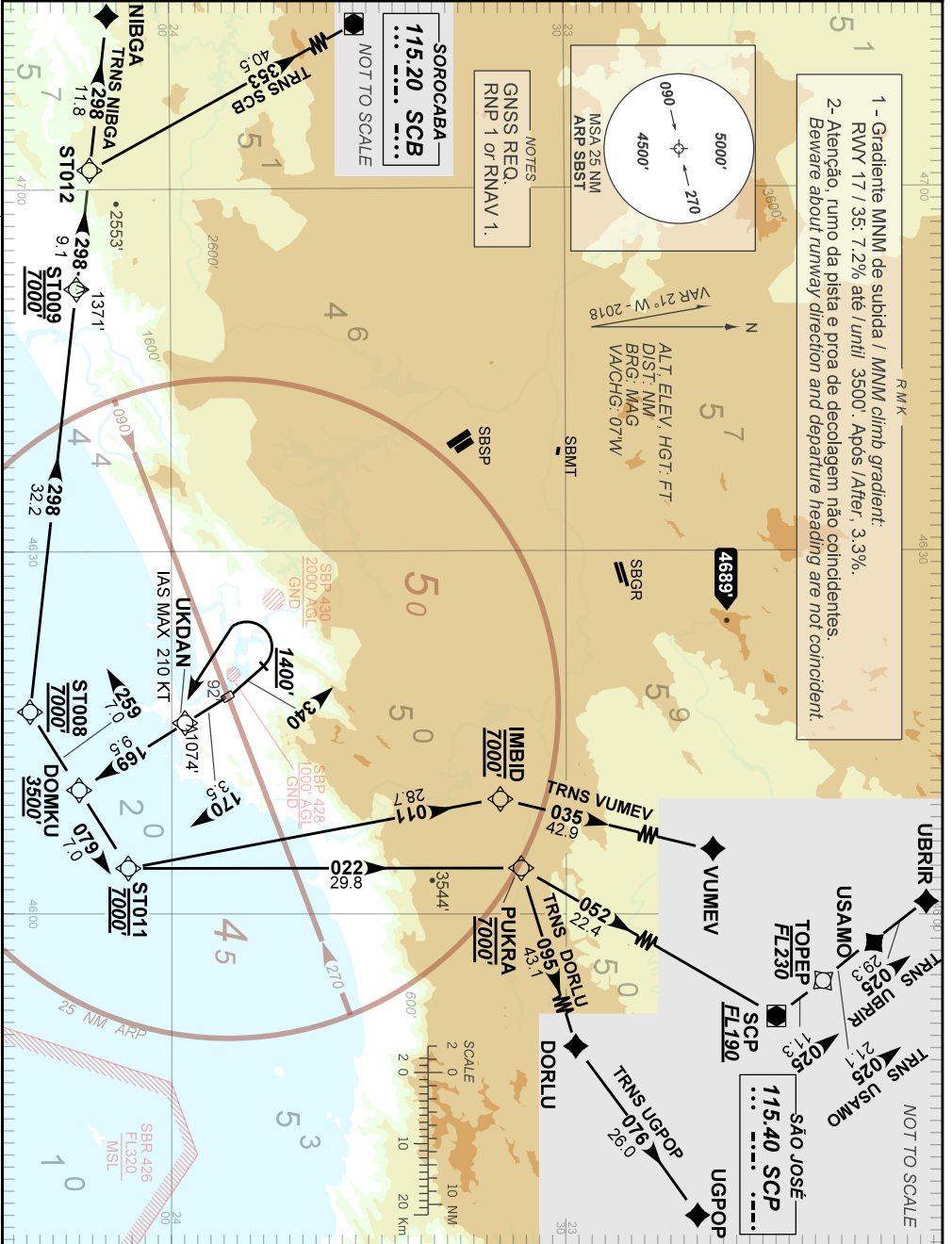
RWY 17/35

RNAV DOMKU 1A

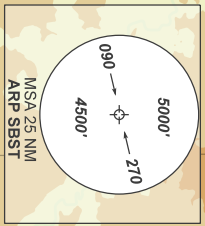
AD ELEV: 13'

TA 8000'	AFIS SANTOS 118.65 132.225	APP SÃO PAULO 119.60 122.75 134.90 133.85 135.75	ACC BRASÍLIA 123.35 134.00 126.15 127.25 126.80	ACC CURITIBA 132.80 126.50 126.95 128.25 125.075
----------	-------------------------------	--------------------------------------------------------	-------------------------------------------------------	--------------------------------------------------------

DEPARTAMENTO DE CONTROLE DO ESPAÇO AEREO



1 - Gradiente MNM de subida / MNM climb gradient:  
RWY 17 / 35: 7.2% até / until: 3500'. Após / After: 3.3%.  
2- Atenção, rumo da pista e proa de decolagem não coincidentes.  
Beware about runway direction and departure heading are not coincident.



VAR 27° W - 2018  
N

ALT. ELEVY, HGT. FT.  
DIST. NM  
BRG. MAG  
VA/CHG. 07'W



CHANGES: LAYOUT: F. PROC.