

**INSTRUMENT APPROACH  
CHART (IAC)**

**AD ELEV: 2474'**

**CAXIAS DO SUL / Hugo Cantergiani (SBCX)  
RNP Y RWY 15 (AR)**

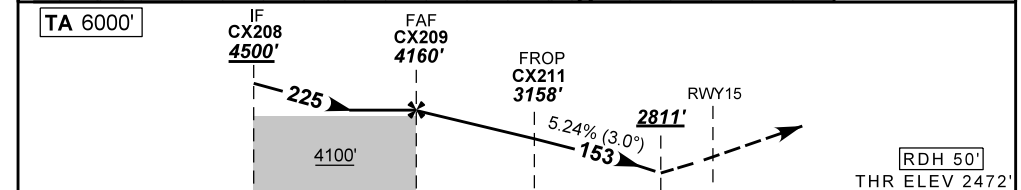
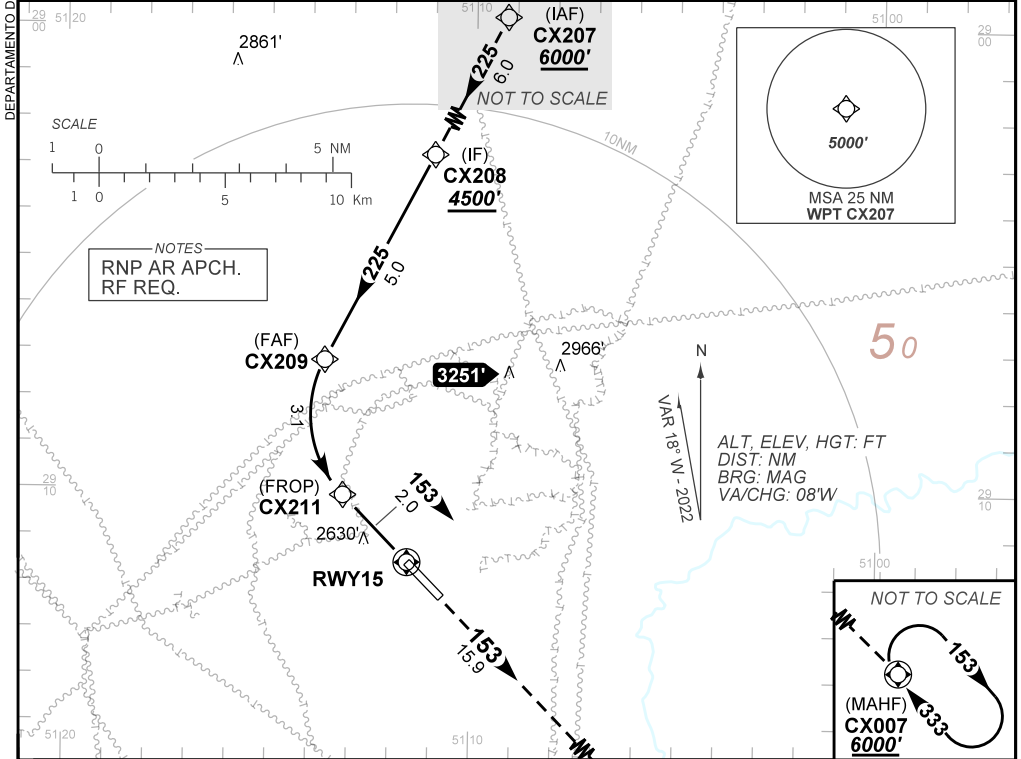
CAT (A,B,C)

ATIS <b>NIL</b>	APP PALEGRE <b>119.00 120.10 120.55 128.90</b>	AFIS CAXIAS <b>131.60</b>	GNDC <b>NIL</b>
--------------------	---	------------------------------	--------------------

TEMP LNAV/VNAV <b>MIN 0°C / MAX 45°C</b>	FINAL CRS <b>153°</b>	FAF: <b>4160'</b>	RNP 0.3 DA / (OCH): <b>2811' / (339')</b>	<b>N/A</b>
---	--------------------------	----------------------	--	------------

APCH Perdida: Subir para **6000'**. Manter rumo **153** até CX007 para espera.  
Missed APCH: Climb to **6000'**. Maintain course **153** to CX007 for holding.

RMK: Não efetuar transição para RNP da aproximação perdida antes de 0.91 NM de RWY15.  
Do not perform RNP transition of Missed APCH before 0.91 NM from RWY15



TO THR 15 (NM)	10.1	5.0	2.0	0.91	0.0														
CX209	4.0	3.0	CX211	1.0	0.91	RWY15	Ground Speed (KT)	090	110	130	150	170	190						
4160	3796	3477	3158	2840	2811	ALT	FPM	500	600	700	800	NA							
1688	1324	1005	686	368	339	(HGT)	FAF-MAPT	NIL											

STRAIGHT-IN	CAT	A	B	C	D	E
	DA / (OCH)	2811' / (339')				NA
RNP 0.3	ALS/NO ALS/ RVR ALS (m)		NIL / 1500 / NIL			

**AUTORIZAÇÃO ESPECIAL PARA AERONAVE E TRIPULAÇÃO REQUERIDA  
SPECIAL AUTHORIZATION FOR AIRCRAFT AND CREW REQUIRED**

DEPARTAMENTO DE CONTROLE DO ESPAÇO AÉREO

CHANGES: IDENT, LAYOUT, PROC.