

**INSTRUMENT APPROACH
CHART (IAC)**

AD ELEV: 10'

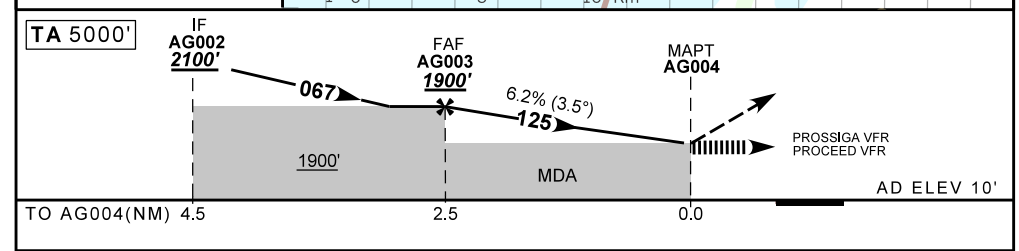
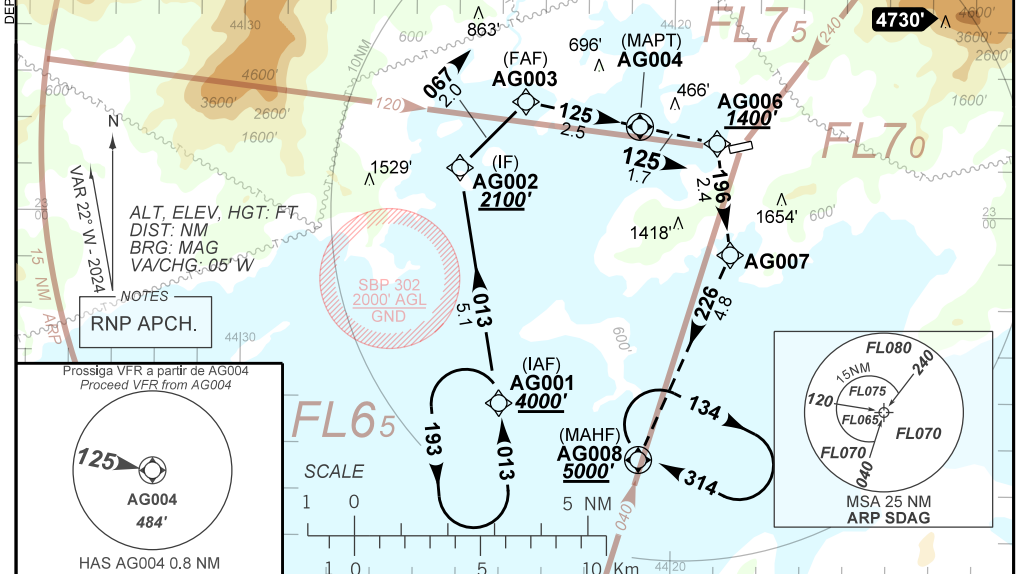
ANGRA DOS REIS / Angra dos Reis (SDAG)

**RNP 125
PINS - (CAT H)**

ATIS NIL	ERAA 132.35	APP RIO 119.00 119.35 120.55 126.20 128.90 129.20 129.80 133.30				FCA 125.275	GNDC NIL
N/A	FINAL CRS 125°	FAF: 1900'	N/A		LNAV MDA / (OCH): 950' / (940')		

APCH Perdida: 1) Subir para **5000'**. Gradiente MNM de 7.5% até **3000'**. Manter o rumo **125** até AG006. Após, curvar à DIREITA direto AG007. Curvar à DIREITA direto AG008 para espera. 2) IAS MAX 70KT até AG007.
Missed APCH: 1) Climb to **5000'**, MNM gradient 7.5% until **3000'**. Maintain course **125** until AG006. After, turn RIGHT direct AG007. After, turn RIGHT to AG008 for holding. 2) IAS MAX 70KT until AG007.

RMK: 1) Contato obrigatório na FCA. Proibido iniciar aproximação enquanto houver outro tráfego executando procedimento de decolagem 2) Requerido FPL "Y" com mudança de regras em AG004.
1) Aircraft must contact FCA. Prohibited start approaching while there is another traffic executing departure procedure 2) FPL "Y" required with flight rules change at AG004.



	AG003	2.0	1.0	AG004	AG004	Ground Speed (KT)	060	070	080	090
	1900	1192	1071	950	ALT	FPM	390	460	520	590
	NIL				(HGT)	FAF-MAPT		NA		

STRAIGHT-IN	CAT	H	
LNAV	MDA / (OCH)	950' / (940')	
	VIS (m)	1500	
CIRCLING	MDA / (OCH)	NA	
	VIS (m)		