

**INSTRUMENT APPROACH
CHART (IAC)**

**VITÓRIA / Eurico de Aguiar Salles, INTL (SBVT)
RNP C RWY 20 (VPT)**

AD ELEV: 34'

(CAT A, B, C, D)

DEPARTAMENTO DE CONTROLE DO ESPAÇO AÉREO

D-ATIS 127.575	APP VITÓRIA 119.85	TWR VITÓRIA 118.10	GNDC VITÓRIA 121.95
--------------------------	------------------------------	------------------------------	-------------------------------

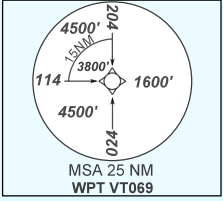
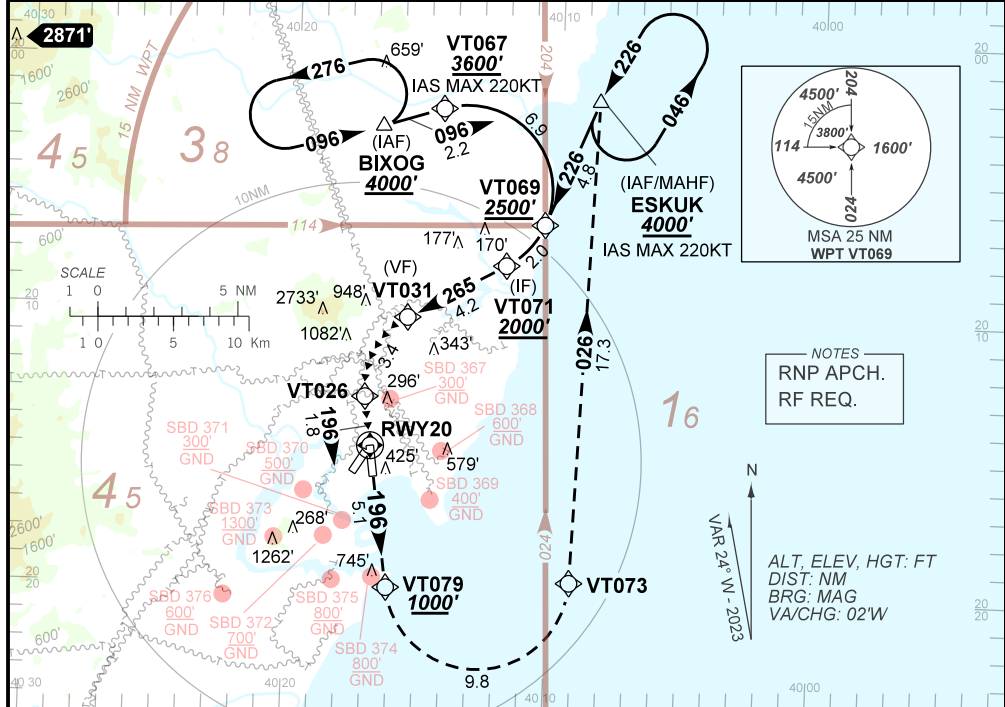
TEMP LNAV/VNAV MIN 0°C / MAX 45°C	FINAL CRS 196°	VF: 1730'	N/A	N/A
---	--------------------------	---------------------	------------	------------

APCH Perdida: 1) Subir para **4000'**. Manter rumo **196** até VT079. Curvar à ESQUERDA até VT073. Após, manter rumo **026** até ESKUK para espera. 2) IAS MAX 220KT.

Missed APCH: 1) Climb to **4000'**. Maintain course **196** to VT079. Turn LEFT to VT073. After, maintain course **026** to ESKUK for holding. 2) IAS MAX 220KT.

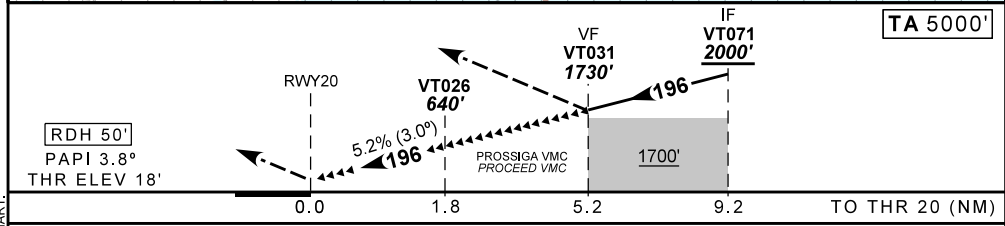
RMK: 1) Caso não esteja em condições visuais no VT031 ou arremeta durante a Trajetória Visual, subir para 4000'. Seguir a Trajetória Visual até RWY20 para interceptar a trajetória de aproximação publicada.
2) RNP na Trajetória de Aproximação Visual.

1) If Visual conditions are not met at VT031 or in case of go around during the Visual Prescribed Track, climb to 4000'. Follow the Visual Prescribed Track until RWY20 to intercept the trajectory of the published missed approach.
2) RNP to Visual Maneuvering on Prescribed Track.



NOTES
RNP APCH.
RF REQ.

ALT, ELEV, HGT: FT
DIST: NM
BRG: MAG
VA/CHG: 02'W



RWY20	VT026	3.0	4.0	VT031					
ALT	640	1023	1342	1730					
(HGT)	622	1005	1324	1712					

Ground Speed (KT)	090	110	130	150	170	190
FPM	500	600	700	800	900	NA
FAF-MAPT	NIL					

Aproximação em condições Visuais requerida. / Visual Approach conditions required.

WEATHER MINIMA
VIS 5000m

CHANGES: NEW CHART.

AIRAC AMDT 2305A1 18 MAY 23

SBVT_IAC_02N 1/1
IAC RNP C RWY 20 (VPT)