

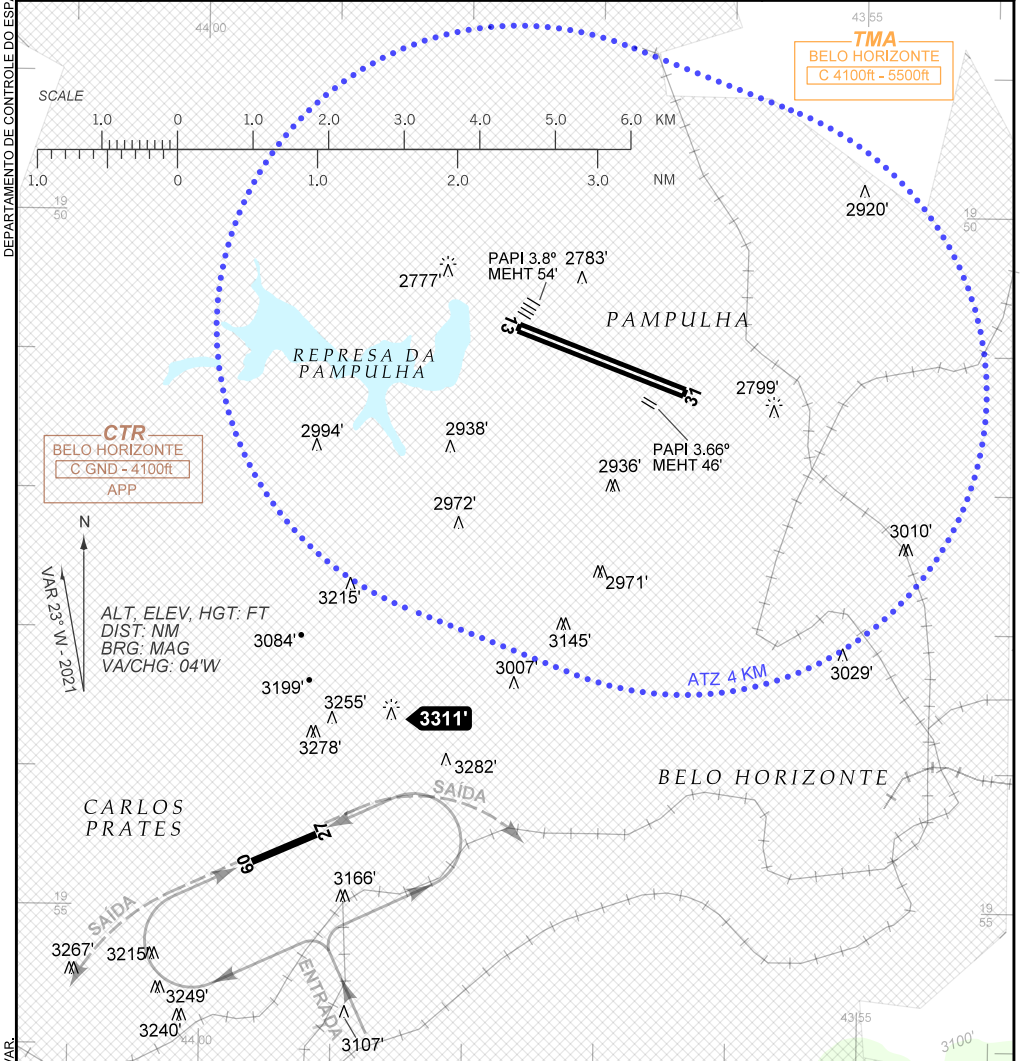
VISUAL APPROACH CHART **BELO HORIZONTE / Pampulha-Carlos Drummond de Andrade (SBBH) (VAC)**

AD ELEV: 2589'

RWY 13/31

ATIS 127.45	APP BELO HORIZONTE 119.10 119.30 119.65 120.20 128.55 129.10 129.40	TWR BELO HORIZONTE 118.00	GNDC BELO HORIZONTE 121.60
------------------------------	--	--	---

DEPARTAMENTO DE CONTROLE DO ESPAÇO AEREO



CHANGES: FREQ. LAYOUT. OBST. RMK. VAR.

RMK:

- 1 - ALTITUDES MÍNIMAS NO CIRCUITO DE TRÁFEGO:
AVIÕES: CAT A, CAT B: 3700', CAT C :4000'
HELICÓPTEROS: 3300'

*MINIMUM ALTITUDES IN THE TRAFFIC PATTERN:
AIRPLANES: CAT A, CAT B: 3700', CAT C: 4000'
HELICOPTERS: 3300'*

- 2 - INFORMAÇÕES COMPLEMENTARES NO VERSO.
SEE REVERSE SIDE FOR ADDITIONAL INFORMATION.

— RMK —

- 3- ATENTAR PARA HELICÓPTEROS EM VOO DE TREINAMENTO ATÉ 3800', NO SETOR NORTE DO AERÓDROMO DO CARLOS PRATES (SBPR).
ATTENTION TO HELICOPTERS IN TRAINING FLIGHT UP TO 3800', IN THE NORTH SECTOR OF THE CARLOS PRATES AERODROME (SBPR).
- 4- OBSERVAR AIC SOBRE CIRCULAÇÃO VISUAL NA TERMINAL BELO HORIZONTE.
SEE AIC ABOUT VISUAL FLIGHT IN BELO HORIZONTE TERMINAL AREA.