

**INSTRUMENT APPROACH  
CHART (IAC)**

**MANAUS / Ponta Pelada, MIL (SBMN)**

**AD ELEV: 257'**

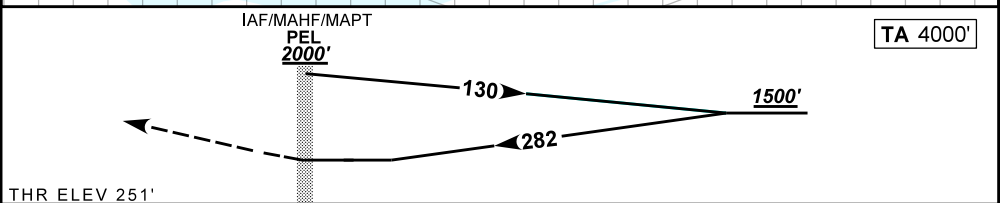
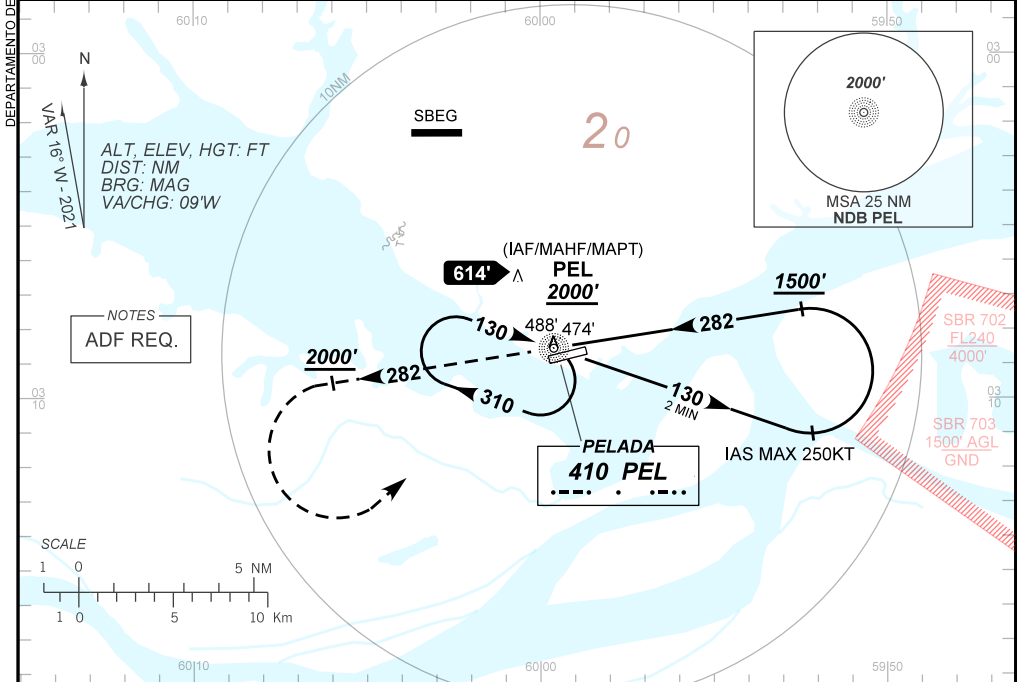
**NDB RWY 27**

ATIS NIL	APP MANAUS 119.25 119.70 120.40	TWR PONTA PELADA 118.60	GNDC NIL
-------------	------------------------------------	----------------------------	-------------

NDB PEL 410 KHz	FINAL CRS 282°	N/A	N/A	NDB MDA / (OCH): 780' / (530')
--------------------	-------------------	-----	-----	-----------------------------------

APCH Perdida: Subir para **2000'**. Manter o QDR **282** do NDB PEL até **2000'**. Após, curvar à ESQUERDA direto NDB PEL para espera.

Missed APCH: Climb to **2000'**. Maintain **282** QDR PEL NDB until **2000'**. After, turn LEFT direct to PEL NDB for holding.



RWY27	NIL	Ground Speed (KT)	090	110	130	150	170	190
ALT	NIL	FPM	650					
(HGT)	NIL	FAF-MAPT	NA					

STRAIGHT-IN	CAT	A	B	C	D	E
NDB	MDA / (OCH)	780' / (530')				
	ALS/NO ALS/ RVR ALS (m)	NIL / 1600 / NIL		NIL / 2400 / NIL		
CIRCLING	MDA / (OCH)	NA				
	VIS (m)	NA				

CHANGES: LAYOUT, MINM OPR, PROC, THR ELEV, VAR.