

INSTRUMENT APPROACH  
CHART (IAC)

RECIFE / Guararapes - Gilberto Freyre, INTL (SBRF)

AD ELEV: 33'

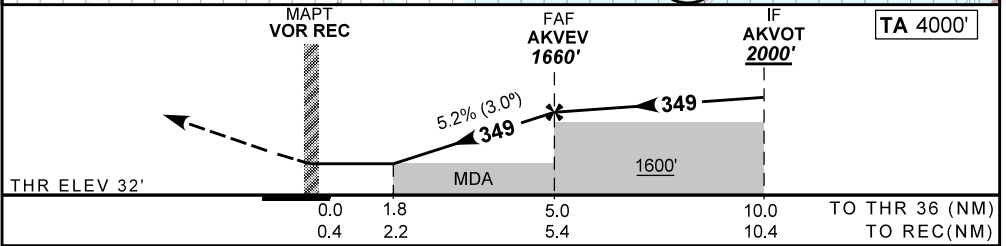
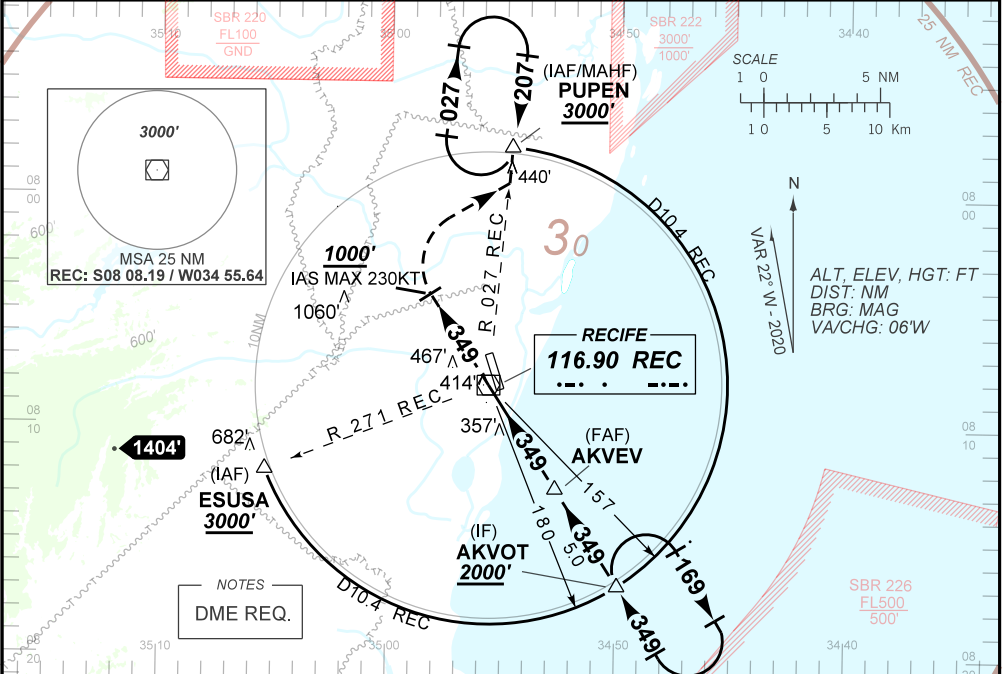
VOR Y RWY 36

D-ATIS <b>127.65</b>	APP RECIFE <b>119.50 119.95 129.60 120.40 121.50</b>	TWR RECIFE <b>118.35 125.25 122.80 (MIL) 121.50</b>	GNDC RECIFE <b>121.85</b>
VOR REC <b>116.90</b>	FINAL CRS <b>349°</b>	FAF: <b>1660'</b>	VOR MDA / (OCH): <b>660' / (630')</b>

APCH Perdida: 1) Subir para **3000'**. Manter proa **349** até cruzar **1000'**. Após, curvar à DIREITA para interceptar a RDL **027** do VOR REC até PUPEN para espera. 2) IAS MAX 230 KT

Missed APCH: 1) Climb to **3000'**. Maintain heading **349** until passing **1000'**. After, turn RIGHT to intercept **027** RDL REC VOR up to PUPEN for holding. 2) IAS MAX 230 KT.

RMK: NIL.



0.0	1.8	5.0	10.0	TO THR 36 (NM)
0.4	2.2	5.4	10.4	TO REC(NM)

RWY36	1.8	2.0	3.0	4.0	AKVEV		KT	090	110	130	150	170	190
ALT	660	720	1038	1357	1660		FPM	500	600	700	800	900	1000
(HGT)	630	687	1005	1324	1627		FAF-MAPT	NA					
STRAIGHT-IN	CAT					A	B	C	D	E			
VOR	MDA / (OCH)					660' / (630')							
	ALS/NO ALS/ RVR ALS (m)					NIL / 1600 / NIL				NIL / 2900 / NIL			
CIRCLING	MDA / (OCH)					NA							
	VIS (m)												

CHANGES: FREQ, LAYOUT, MNM, PROC.