

**INSTRUMENT APPROACH  
CHART (IAC)**

**Montes Claros / Mário Ribeiro (SBMK)**

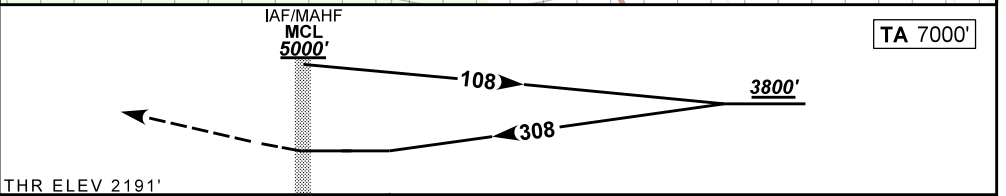
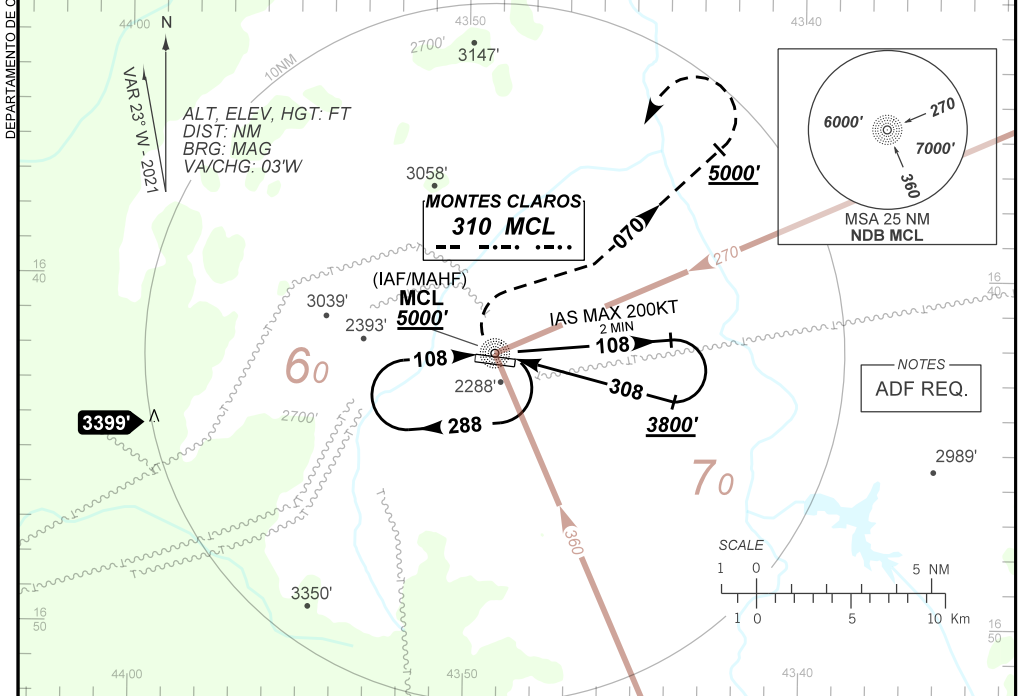
**AD ELEV: 2192'**

**NDB RWY 30**

D-ATIS NIL	APP NIL	AFIS MONTES CLAROS 131.70	GNDC NIL
NDB MCL 310 KHz	FINAL CRS 308°	N/A	NDB MDA / (OCH): 3010' / (820')

APCH Perdida: Subir para **5000'** em curva à DIREITA QDR **070** NDB MCL. Manter QDR **070** do NDB MCL até cruzar **5000'**. Após, curva à ESQUERDA para espera no NDB MCL.

Missed APCH: Climb to **5000'** turning to RIGHT **070** QDR MCL NDB. Maintain **070** QDR MCL NDB until passing **5000'**. After, turn LEFT for holding at MCL NDB.



RWY30	NIL	Ground Speed (KT)	090	110	130	150	170	190
ALT	NIL	FPM	600			NA		
(HGT)	NIL	FAF-MAPT	NIL					

STRAIGHT-IN	CAT	A	B	C	D	E
NDB	MDA / (OCH)	3010' / (820')				NA
	ALS/NO ALS/ RVR ALS (m)	NIL / 1600 / NIL	NIL / 2000 / NIL	NIL / 3800 / NIL		
CIRCLING	MDA / (OCH)	3010' / (820')		3220' / (1030')		NA
	VIS (m)	2000		4800		

CHANGES: LAYOUT, VAR.