

AD ELEV: 2461'

ILS M or LOC M RWY 27L

D-ATIS 127.75	APP SÃO PAULO 129.75 119.15 129.00 134.15 123.25 123.90 125.60 121.35 124.70 121.50	TWR GUARULHOS 118.40 132.75 135.20 121.50	GNDCL GUARULHOS 121.70 126.90
-------------------------	---------------------------------------------------------------------------------------------------	---------------------------------------------------------	-----------------------------------------

LOC IBC 111.10 MHz	FINAL CRS 275°	FAF: 4090'	CAT I DA / (OCH): 2646' / (200')	LOC Only MDA / (OCH): 2980' / (540')
------------------------------	--------------------------	----------------------	--------------------------------------------	------------------------------------------------

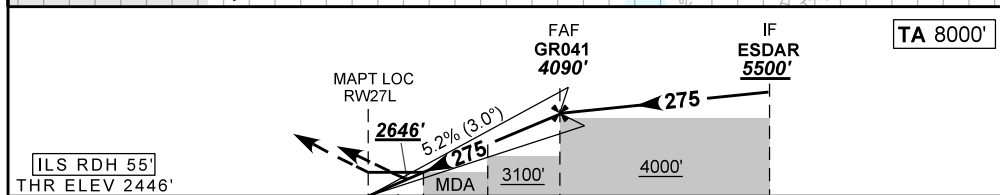
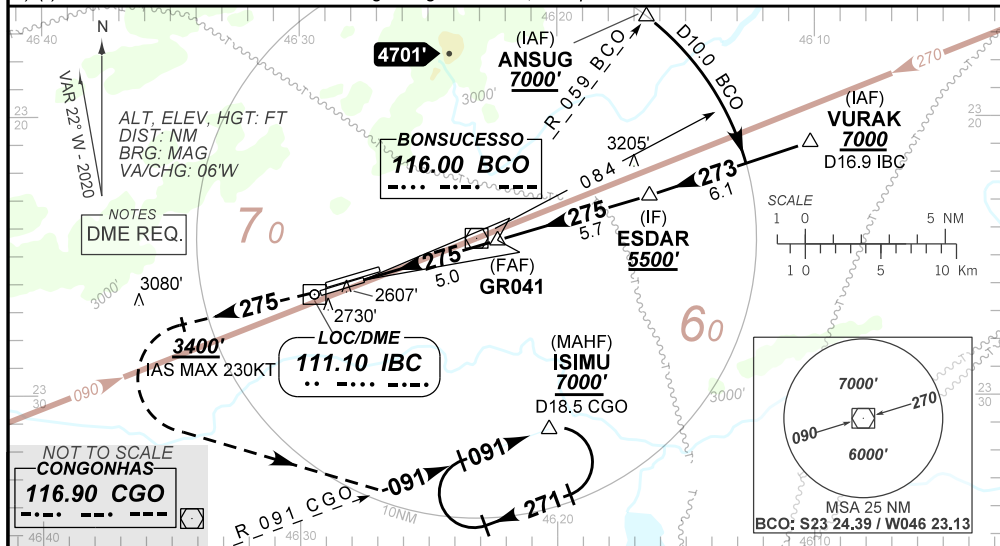
APCH Perdida: 1) Subir para **7000'**. Gradiente MNM 5% na proa **275** até cruzar **3400'**. Após, curvar a ESQUERDA para interceptar RDL **091** do VOR CGO para espera em ISIMU. 2) IAS MAX 230KT.
Missed APCH: 1) Climb to **7000'**. MNM gradient 5% on heading **275** until passing **3400'**. After, turn LEFT to intercept **091** RDL CGO VOR for holding at ISIMU. 2) IAS MAX 230KT.

RMK: 1) ARREMETIDA VISUAL RWY 27R: Subir para **7000'**. Manter proa **275**. Após cruzar **6000'**, curvar à DIREITA proa **045** e aguardar instruções ATC.

1) VISUAL GO AROUND RWY 27R. Climb to **7000'**. Maintain heading **275**. After passing **6000'**, turn RIGHT heading **045** and expect ATC instructions.

2) (*) VIS RVR ALS 550m para APCH utilizando Diretor de Voo, Piloto Automático ou HUD.

2) (*) VIS RVR ALS 550m for APCH using a Flight Director, Autopilot or HUD.



0.0	1.5	3.0	5.0	10.7	TO THR 27L (NM)
0.2	1.7	3.2	5.2	10.8	TO IBC (DME)

RWY27L	1.5	2.0	3.0	4.0	GR041	KT	090	110	130	150	170	190
ALT	2980	3138	3456	3775	4090	FPM	500	600	700	800	900	NA
(HGT)	540	692	1010	1329	1644	FAF-MAPT	NA					

STRAIGHT-IN	CAT	A	B	C	D	E
	DA / (OCH)	2646' / (200')				
CAT I	ALS/NO ALS/ RVR ALS (m)	800 / 1200 / 700*				
	LOC	MDA / (OCH)	2980' / (540')			
ALS/NO ALS/ RVR ALS (m)		800 / 1600 / NIL		1700 / 2400 / NIL		
CIRCLING	MDA / (OCH)	NA				
	VIS (m)	NA				

CHANGES: RMK