

STANDARD DEPARTURE CHART  
INSTRUMENT (SID)

GUARATINGUETÁ / Guaratinguetá (SBGW)

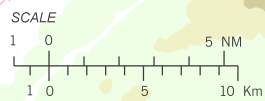
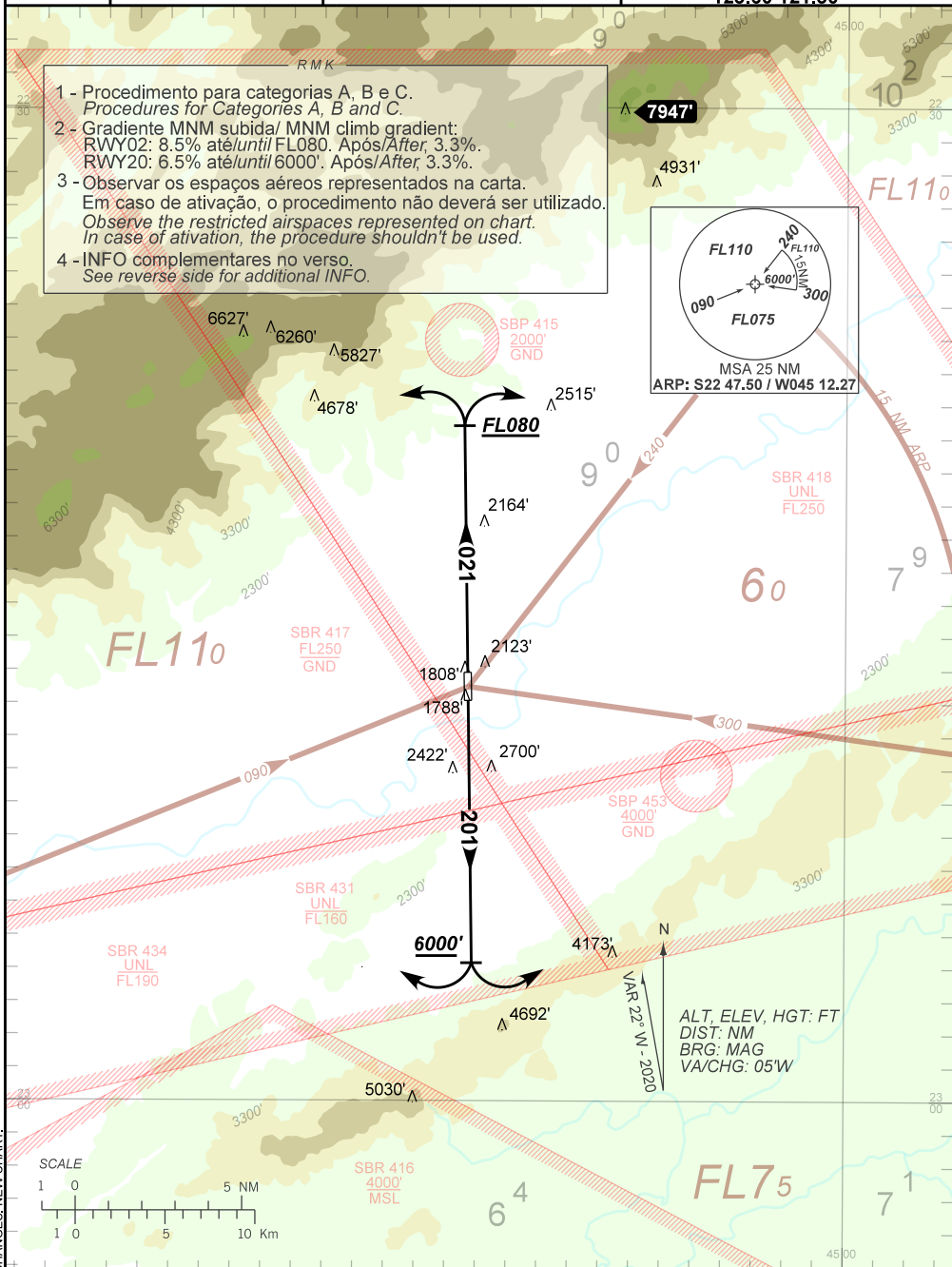
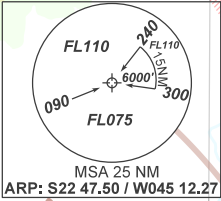
RWY 02 / 20

OMNI

AD ELEV: 1761'

TA 7000'	TWR GUARÁ 118.15	APP GUARÁ 120.15	APP SÃO PAULO 121.35 124.70 123.90 125.60 121.50
----------	---------------------	---------------------	--

- 1 - Procedimento para categorias A, B e C.  
*Procedures for Categories A, B and C.*
- 2 - Gradiente MNM subida/ MNM climb gradient:  
RWY02: 8.5% até/until FL080. Após/After, 3.3%.  
RWY20: 6.5% até/until 6000'. Após/After, 3.3%.
- 3 - Observar os espaços aéreos representados na carta.  
Em caso de ativação, o procedimento não deverá ser utilizado.  
*Observe the restricted airspaces represented on chart.  
In case of activation, the procedure shouldn't be used.*
- 4 - INFO complementares no verso.  
*See reverse side for additional INFO.*



CHANGES: NEW CHART.

— R M K —

5 - Obstáculos próximos não considerados para o cálculo do gradiente (PDG):  
*Close-in obstacles not considered for procedure gradient (PDG):*

RWY 02

Terreno/terrain a partir de/from THR 20, AZM 294, DIST 152m, ELEV 1808'.

RWY 20

Terreno/terrain a partir de/from THR 02, AZM 288, DIST 152m, ELEV 1788'.

Terreno/terrain a partir de/from THR 02, AZM 279, DIST 78m, ELEV 1782'.

Terreno/terrain a partir de/from THR 02, AZM 150, DIST 229m, ELEV 1795'.

Terreno/terrain a partir de/from THR 02, AZM 164, DIST 381m, ELEV 1818'.