

INSTRUMENT APPROACH CHART (IAC)

JOINVILLE / Lauro Carneiro de Loyola (SBJV)

AD ELEV: 15'

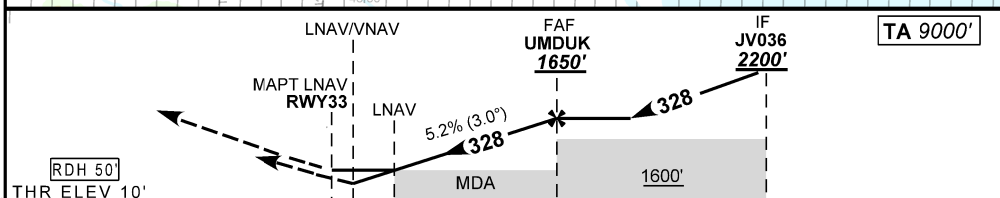
RNAV (GNSS) Z RWY 33

| | | | | | |
|-----------------------|--|---------------------|---|---|---------------------|
| ATIS 127.85 | APP CURITIBA 119.70 119.95 120.65 120.95 129.55 133.15 | | | TWR JOINVILLE 118.00 | GND C NIL |
| N/A | FINAL CRS 328° | FAF 1650' | LNAV/VNAV DA / (OCH): 365' (355') | LNAV MDA / (OCH): 470' (460') | |

APCH Perdida: Subir para **4000'**. Manter rumo **328**, IAS MAX 210KT, até cruzar **800'**. Curvar à DIREITA rumo **027**, IAS MAX 210KT, para GEPVO. Curvar à DIREITA rumo **180**, IAS MAX 210KT, para ARNED, para espera.

Missed APCH: Climb to **4000'**. Maintain course **328**, IAS MAX 210KT, until passing **800'**. Then, turn RIGHT course **027**, IAS MAX 210KT, to GEPVO. Then, turn RIGHT course **180**, IAS MAX 210KT, to ARNED for holding.

RMK: 1) Para sistemas BARO-VNAV não compensados, procedimento LNAV/VNAV não autorizado abaixo de -10°C.
1) For uncompensated systems BARO-VNAV, LNAV/VNAV procedure not authorized below -10°C.



| | | | | | | | | | | | | | |
|--|-------|-----|-----|------|------|-------|----------|-----|-----|-----|-----|-----|-----|
| | RWY33 | 1.3 | 2.0 | 3.0 | 4.0 | UMDUK | KT | 090 | 110 | 130 | 150 | 170 | 190 |
| | ALT | 470 | 697 | 1015 | 1334 | 1650 | FPM | 500 | 600 | 700 | 800 | 900 | NA |
| | (HGT) | 460 | 687 | 1005 | 1324 | 1640 | FAF-MAPT | NA | | | | | |

| | | | | | | |
|-------------|------------------------|-------------------|---|-------------------|---|----|
| STRAIGHT-IN | CAT | A | B | C | D | E |
| LNAV/VNAV | DA / OCH | 365' / (355') | | | | NA |
| | ALS/NO ALS/RVR ALS (m) | NIL / 1600' / NIL | | | | |
| LNAV | MDA / OCH | 470' / (460') | | | | NA |
| | ALS/NO ALS/RVR ALS (m) | NIL / 1600' / NIL | | NIL / 2200' / NIL | | |
| CIRCLING | MDA / OCH | NA | | | | |
| | VIS (m) | | | | | |

CHANGES: ATIS, EAC, FREQ, MNM, OPR, TA