

**INSTRUMENT APPROACH
CHART (IAC)**

NATAL / Campo Augusto Severo, MIL (SBNT)

**USO EXCLUSIVO ACFT MILITARES
MILITARY ACFT ONLY**

VOR X RWY 16R

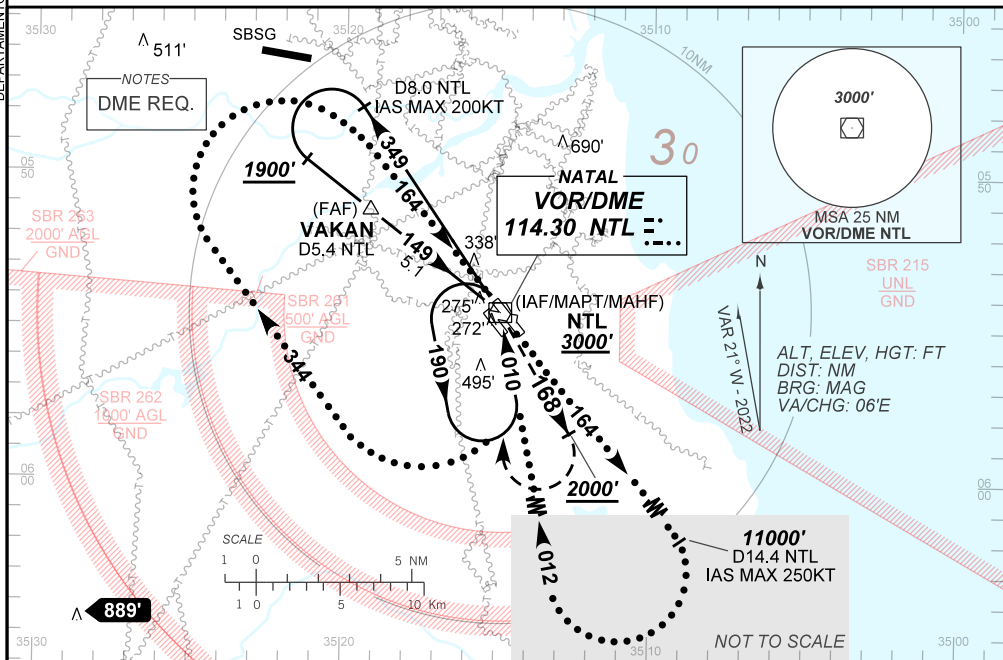
AD ELEV: 171'

D-ATIS 132.65	APP NATAL 119.30 119.65 120.65 129.80			TWR NATAL 118.70 122.80	GNDC NATAL 121.90
VOR NTL 114.30 MHz	FINAL CRS 149°	FAF: 1830'	N/A	VOR MDA / (OCH): 650' / (480')	

APCH Perdida: 1) Subir para **3000'**. Manter a RDL **168** do VOR NTL até **2000'**. Após, curvar à DIREITA direto VOR NTL para espera. 2) IAS MAX 200KT.

Missed APCH: 1) Climb to **3000'**. Maintain **168** RDL NTL VOR until **2000'**. After, turn RIGHT direct NTL VOR for holding. 2) IAS MAX 200KT.

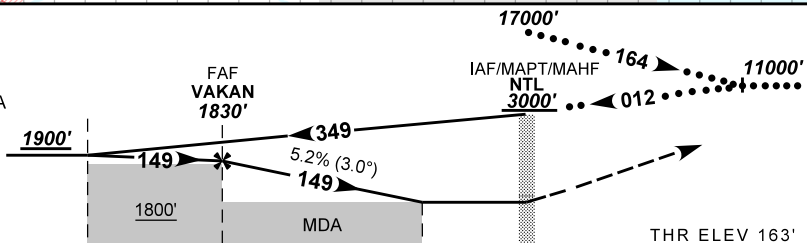
DEPARTAMENTO DE CONTROLE DO ESPAÇO AÉREO



TA 4000'

PENETRAÇÃO
IAS MAX 250KT
RAZÃO DE DESCIDA
2400 FPM

PENETRATION
IAS MAX 250KT
RATE OF DESCENT
2400 FPM



TO THR 16R(NM)	7.7	5.1	1.4	0.0
TO NTL (DME)	8.0	5.4	1.7	0.3

VAKAN	4.0	3.0	2.0	1.4	RW16R	Ground Speed (KT)	090	110	130	150	170	190	
	1830	1486	1167	849	650		ALT	500	600	700	800	900	1000
	1666	1323	1004	686	480		(HGT)	FAF-MAPT	NA				

STRAIGHT-IN	CAT	A	B	C	D	E
	MDA / (OCH)	650' / (480')				
VOR	ALS/NO ALS/ RVR ALS (m)	NIL / 1600 / NIL			NIL / 2200 / NIL	
	MDA / (OCH)	660' / (490')	910' / (740')		1190' / (1020')	
CIRCLING	VIS (m)	1600	3200		4800	

CHANGES: PROC. THR ELEV.

AIRAC AMDT 2212A1 01 DEC 22

USO EXCLUSIVO ACFT MILITARES / MILITARY ACFT ONLY

**SBNT_IAC_01V 1/1
IAC VOR X RWY 16R**