

INSTRUMENT APPROACH  
CHART (IAC)

GAVIÃO PEIXOTO / EMBRAER - Unidade Gavião Peixoto (SBGP)

CARTA DE USO EXCLUSIVO  
ENSAIO EM VOO

ILS Y RWY 20

AD ELEV: 1998'

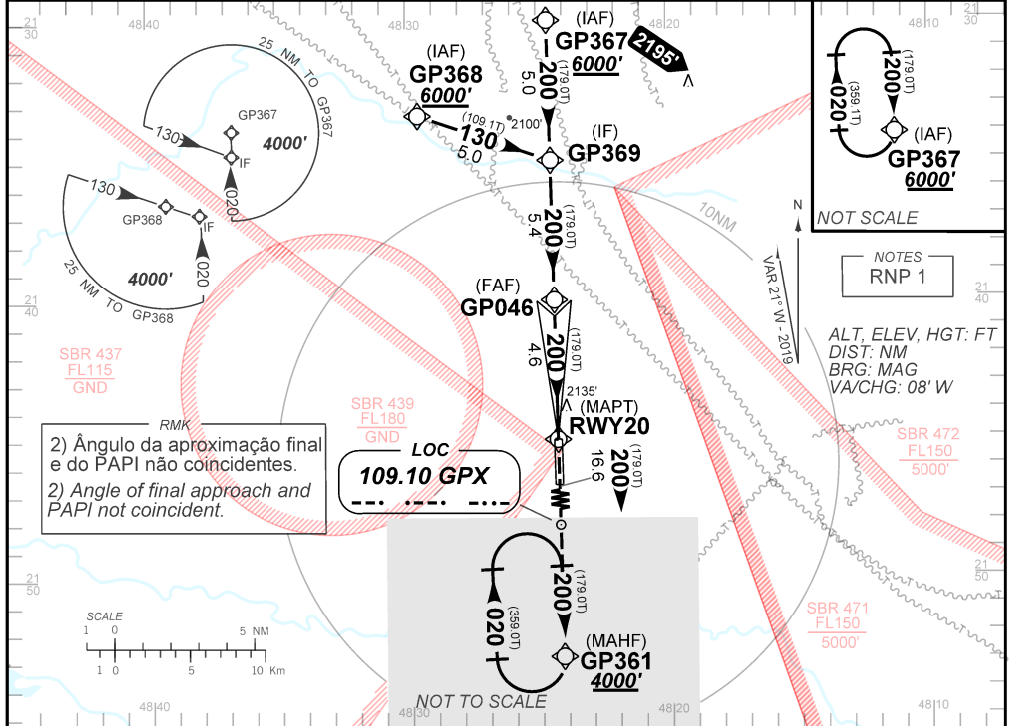
ATIS NIL	APP NIL	AFIS GAVIÃO 118.95	LOC GPX 109.10 MHz
-------------	------------	-----------------------	-----------------------

FINAL CRS 200°	FAF: 5000'	CAT I DA / (OCH): 2321' (324')	N/A
-------------------	---------------	-----------------------------------	-----

APCH Perdida: Subir para **4000'**. Manter rumo **200** até GP361 para espera.

Missed APCH: Climb to **4000'**. Maintain course **200** up to GP361 for holding.

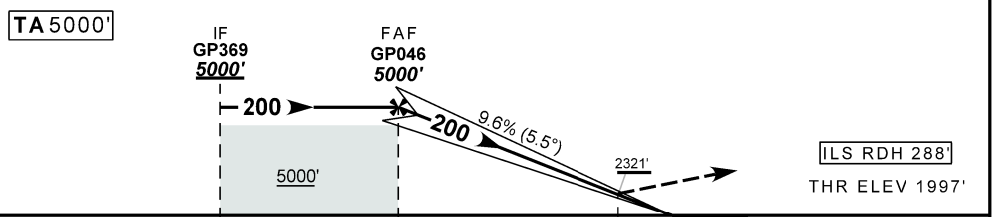
RMK: 1) Procedimento de uso exclusivo da EMBRAER para ensaio em voo. Compulsório voo diurno sob VFR.  
1) Procedure of exclusive use by EMBRAER for flight test. Compulsory daylight flight under VFR.



RMK  
2) Ângulo da aproximação final  
e do PAPI não coincidentes.  
2) Angle of final approach and  
PAPI not coincident.

LOC  
109.10 GPX

NOTES  
RNP 1  
ALT, ELEV, HGT: FT  
DIST: NM  
BRG: MAG  
VA/CHG: 08' W



TO THR 20 (NM) 10.0 4.6 0.5

NIL	RWY20	KT	NIL
NIL	ALT	FPM	NIL
NIL	(HGT)	FAF-MAPT	NIL

STRAIGHT-IN	CAT	A	B	C	D	E
CAT I	DA / (OCH)	2321' / (324')				
	ALS/NO ALS/ RVR ALS (m)	NIL / 1600 / NIL				
CIRCLING	MDA / (OCH)	NA				
	VIS (m)	NA				

CHANGES: FREQ.