

**INSTRUMENT APPROACH CHART (IAC)** **GUARANTÁ DO NORTE / Campo de Provas Brig. Veloso (CPBV), MIL (SBCC)**

**AD ELEV: 1777'**

**ILS Z or LOC Z RWY 12**

ATIS NIL	APP NIL	AFIS CACHIMBO 125.90	TWR NIL	GNDC NIL
-------------	------------	-------------------------	------------	-------------

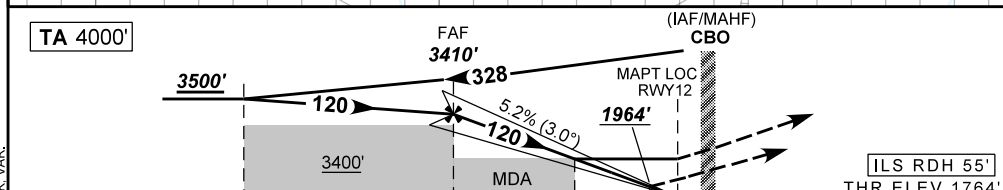
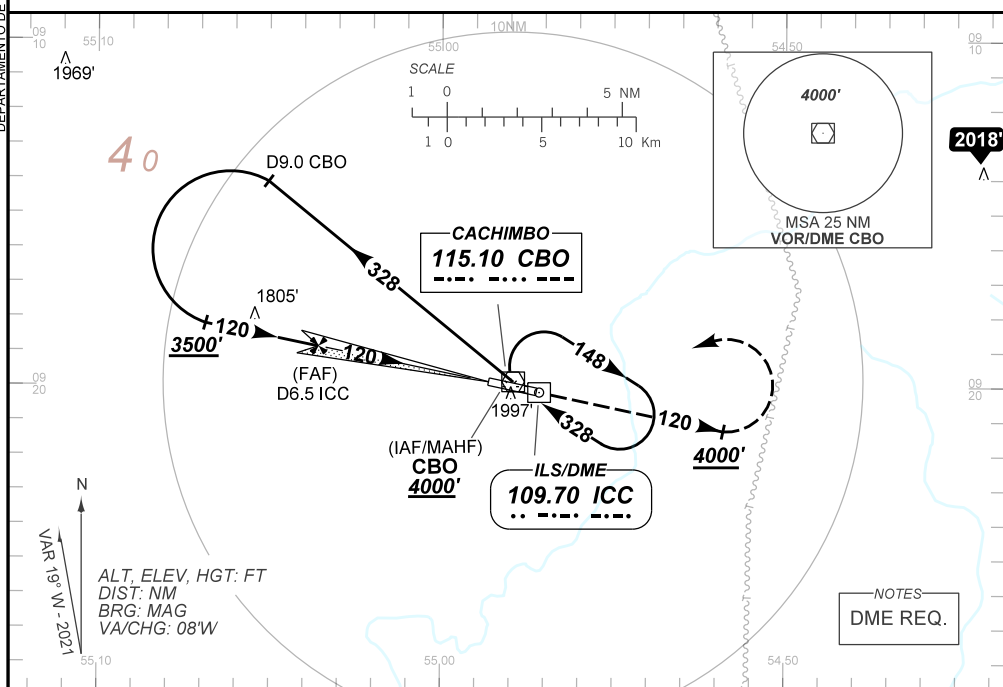
LOC ICC 109.70 MHz	FINAL CRS 120°	FAF: 3410'	CAT I DA / (OCH): 1964' / (200')	LOC MDA / (OCH): 2220' / (460')
-----------------------	-------------------	---------------	-------------------------------------	------------------------------------

APCH Perdida: Subir para **4000'** na proa **120**. Após, curvar à **ESQUERDA** direto VOR CBO para espera.

Missed APCH: Climb to **4000'** on heading **120**. After, turn **LEFT** direct CBO VOR for holding.

RMK: NIL.

DEPARTAMENTO DE CONTROLE DO ESPAÇO AEREO



TO THR 12 (NM)	8.3	5.0	1.3	0.5	0.0
TO ICC (DME)	9.8	6.5	2.8	2.0	1.5

FAF	4.0	3.0	2.0	1.3	0.5	RWY12	Ground Speed (KT)	090	110	130	150	170	190
3410	3092	2774	2456	2220	1964	ALT	FPM	500	600	700	800	900	1050
1646	1328	1010	692	460	200	(HGT)	FAF-MAPT	NA					

STRAIGHT-IN	CAT	A		B		C		D		E	
		DA / (OCH)		1964' / (200')		NIL / 1200' / NIL		2220' / (460')		NIL / 1600' / NIL	
LOC	CAT I	ALS/NO ALS/ RVR ALS (m)		NIL / 1600' / NIL		NIL / 2100' / NIL		NA			
		MDA / (OCH)		NIL / 1600' / NIL		NIL / 2100' / NIL		NA			
CIRCLING	CAT I	MDA / (OCH)		NIL / 1600' / NIL		NIL / 2100' / NIL		NA			
		VIS (m)		NIL / 1600' / NIL		NIL / 2100' / NIL		NA			

CHANGES: IDENT, LAYOUT, MNM OPR, OBST, RMK, VAR.