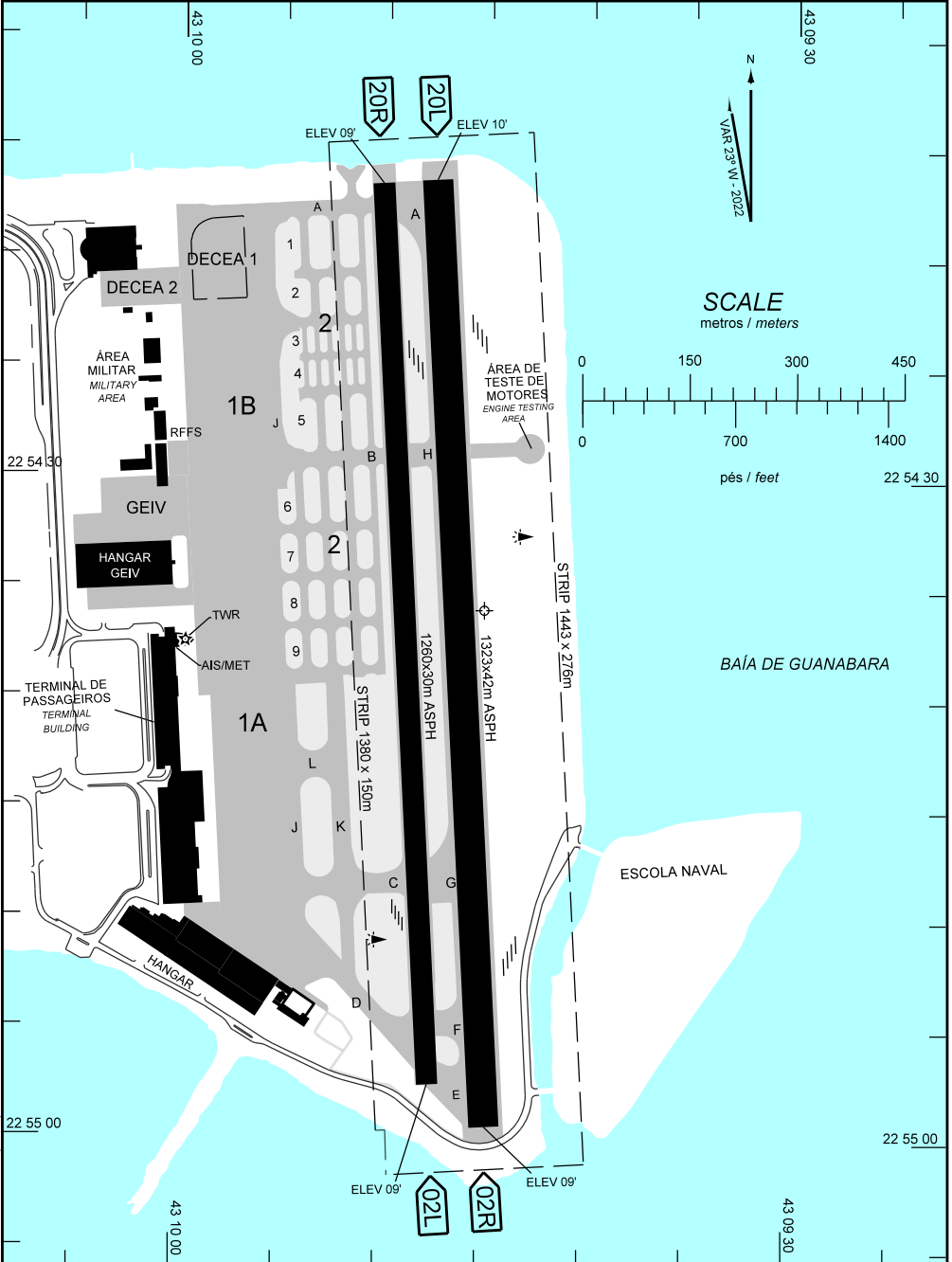


AD ELEV: 10'

ARP S22 54 36 W043 09 45

|                         |                      |                       |                             |                     |
|-------------------------|----------------------|-----------------------|-----------------------------|---------------------|
| D-ATIS<br><b>132.65</b> | DCL<br><b>121.05</b> | GNDC<br><b>121.70</b> | TWR<br><b>118.70 121.50</b> | APRON<br><b>NIL</b> |
|-------------------------|----------------------|-----------------------|-----------------------------|---------------------|



CHANGES: LAYOUT, TWR, WDI

# ADC - SBRJ: INFORMAÇÕES COMPLEMENTARES / COMPLEMENTARY INFORMATION

| CARACTERÍSTICAS FÍSICAS / PHYSICAL CHARACTERISTICS |         |              |     |                               |     |     |          |            |                                    |     |  |
|--|---------|--------------|-----|-------------------------------|-----|-----|----------|------------|------------------------------------|-----|--|
| PISTA<br>RUNWAY                                    |         |              |     | DIMENSÕES(m)<br>DIMENSIONS(m) |     |     |          | PCN        | TIPO DE SUPERFÍCIE<br>SURFACE KIND |     |  |
| RWY  | BRG MAG | Tipo<br>Type | RCD | RWY                           | SWY | CWY | STRIP    | RWY        | RWY                                | SWY |  |
| a  | b       | c            | d   | e                             | f   | g   | h        | i          | j                                  | k   |  |
| 02R  | 020     | NPA          | 4C  | 1323x42                       |     |     | 1443     | 65/F/B/X/T | ASPH                               |     |  |
| 20L  | 200     | NPA          | 4C  |                               |     |     | x<br>276 |            |                                    |     |  |
| 02L  | 020     | NINST        | 3C  | 1260x30                       |     |     | 1380     | 39/F/B/X/T | ASPH                               |     |  |
| 20R  | 200     | NINST        | 3C  |                               |     |     | x<br>150 |            |                                    |     |  |

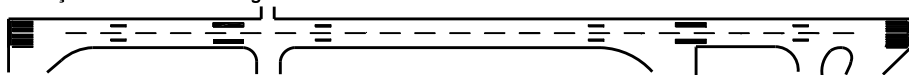
## DISTÂNCIAS DECLARADAS, AUXÍLIOS VISUAIS E COORDENADAS DAS CABECEIRAS DECLARED DISTANCES, VISUAL AIDS AND THRESHOLD COORDINATES

| RWY | TORA(m) | TODA(m) | ASDA(m) | LDA(m) | AUXÍLIOS / AIDS | ALTURA GEOIDAL(m)<br>GEOID HEIGHT(m) | COORDENADAS<br>COORDINATES |
|-----|---------|---------|---------|--------|-----------------|--------------------------------------|----------------------------|
| 02R | 1323    | 1323    | 1323    | 1323   | PAPI (3.23°)    | -5,51                                | S22 54 59 W043 09 45       |
| 20L | 1323    | 1323    | 1323    | 1323   | PAPI (3.12°)    | -5,50                                | S22 54 17 W043 09 48       |
| 02L | 1260    | 1260    | 1260    | 1260   | PAPI (3.23°)    | -5,51                                | S22 54 57 W043 09 48       |
| 20R | 1260    | 1260    | 1260    | 1260   | PAPI (3.12°)    | -5,50                                | S22 54 17 W043 09 50       |

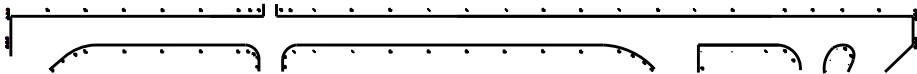
## SERVICO DE SALVAMENTO E CONTRAINCÊNDIO / RESCUE AND FIRE FIGHTING SERVICE: RFFS REQ - 7

RWY 20L/02R

### Sinalização horizontal / Marking Aids

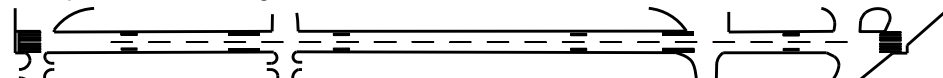


### Auxílios luminosos / Lighting Aids

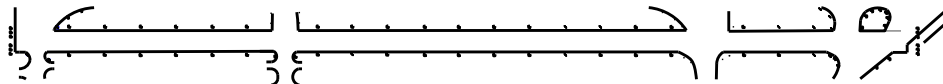


RWY 20R/02L

### Sinalização horizontal / Marking Aids



### Auxílios luminosos / Lighting Aids



### RMK:

- MEHT: PAPI - RWY 02L - 41FT. O EQUIPAMENTO ESTÁ RESTRITO PARA OPERAÇÃO DENTRO DE 1NM DA CABECEIRA DEVIDO ELEVACÃO DO PAÓ DE AÇÚCAR.  
RWY 02L - 41FT. THE EQUIPMENT IS RESTRICTED TO OPERATION WITHIN 1NM FROM THE THRESHOLD DUE TO THE SUGAR LOAF ELEVATION.
- RWY 02R - 40FT. UTILIZAÇÃO AUTORIZADA SOMENTE DENTRO DE 1,8 KM (1NM) A PARTIR DA CABECEIRA DA PISTA 02R.  
RWY 02R - 40FT. USE AUTHORIZED ONLY WITHIN 1.8 KM (1NM) FROM THE RWY 02R THRESHOLD.
- RWY 20 L - 37.40FT.
- RWY 20R - 37FT.