

**INSTRUMENT APPROACH
CHART (IAC)**

GUAJARÁ-MIRIM / Guajar-Mirim (SBGM)

AD ELEV: 479'

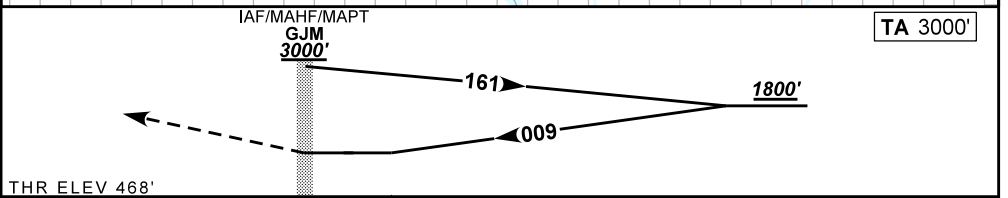
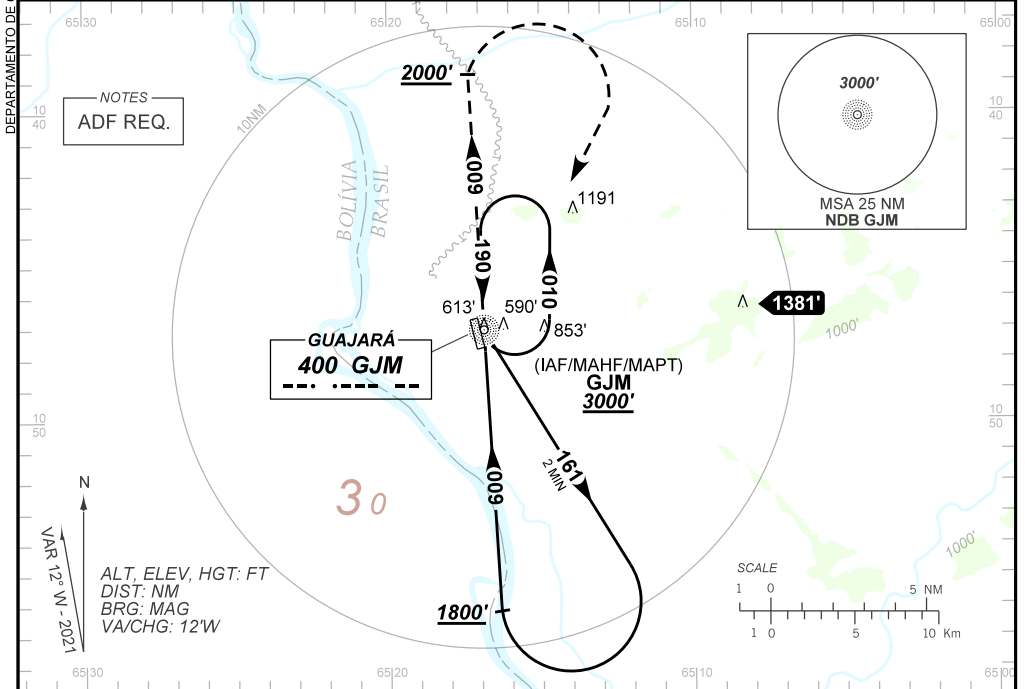
NDB RWY 35

ATIS NIL	APP NIL	AFIS GUAJAR-MIRIM 125.90	GNDC NIL
-------------	------------	------------------------------	-------------

NDB GJM 400 KHz	FINAL CRS 009°	N/A	N/A	NDB MDA / (OCH): 900' / (440')
--------------------	-------------------	-----	-----	--

APCH Perdida: Subir para **3000'**. Manter QDR **009** do NDB GJM at **2000'**. Aps, curvar  DIREITA direto NDB GJM para espera.

Missed APCH: Climb to **3000'**. Maintain **009** QDR GJM NDB until **2000'**. After, turn RIGHT direct to GJM NDB for holding.



THR ELEV 468'

RWY35	NIL	Ground Speed (KT)	090	110	130	150	170	190
ALT	NIL	FPM	650					NA
(HGT)	NIL	FAF-MAPT	NA					

STRAIGHT-IN	CAT	A	B	C	D	E	
NDB	MDA / (OCH)	900' / (440')					NA
	ALS/NO ALS/ RVR ALS (m)	NIL / 1600 / NIL		NIL / 2000 / NIL			
CIRCLING	MDA / (OCH)	NA					NA
	VIS (m)	NA					

CHANGES: LAYOUT, PROC, VAR.