

**INSTRUMENT APPROACH
CHART (IAC)**

ALTAMIRA / Altamira (SBHT)

VOR RWY 25

(CAT A,B,C)

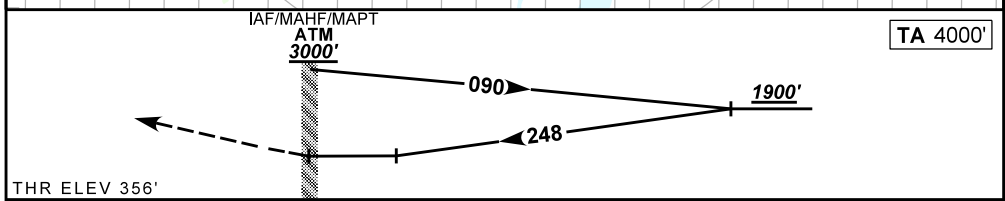
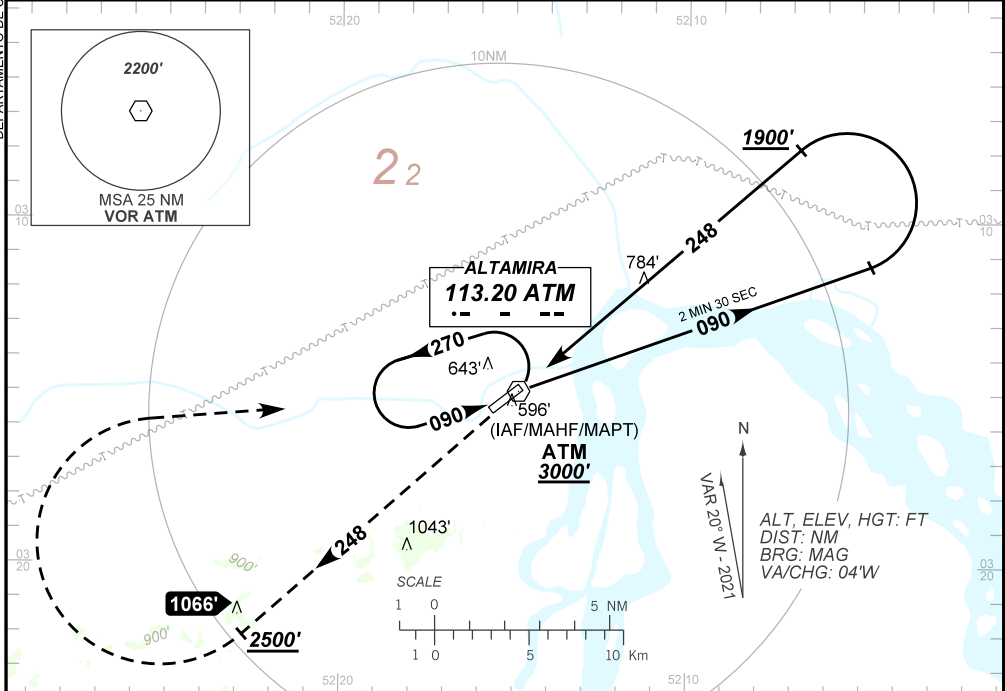
AD ELEV: 368'

ATIS NIL	APP NIL	AFIS ALTAMIRA 125.85	GNDC NIL
VOR ATM 113.20 MHz	FINAL CRS 248°	N/A	VOR MDA / (OCH): 1080' / (730')

APCH Perdida: Subir para **3000'**. Manter RDL **248** do VOR ATM até **2500'**. Após, curvar à DIREITA direto VOR ATM para espera.

Missed APCH: Climb to **3000'**. Maintain **248** RDL ATM VOR until **2500'**. After, turn RIGHT direct to ATM VOR for holding.

DEPARTAMENTO DE CONTROLE DO ESPAÇO AÉREO



RWY25	NIL	Ground Speed (KT)	090	110	130	160	170	190
ALT	NIL	FPM	600			NA		
(HGT)	NIL	FAF-MAPT	NA					
STRAIGHT-IN	CAT	A	B	C	D	E		
VOR	MDA / (OCH)	1080' / (730')				NA		
	ALS/NO ALS/ RVR ALS (m)	NIL / 1600 / NIL		NIL / 3400 / NIL				
CIRCLING	MDA / (OCH)	NA						
	VIS (m)							

CHANGES: LAYOUT, MDA, PROC. TA, VIS.