

INSTRUMENT APPROACH
CHART (IAC)

ARACAJU / Santa Maria, INTL (SBAR)

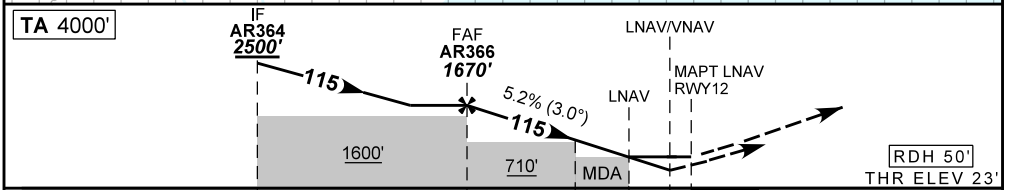
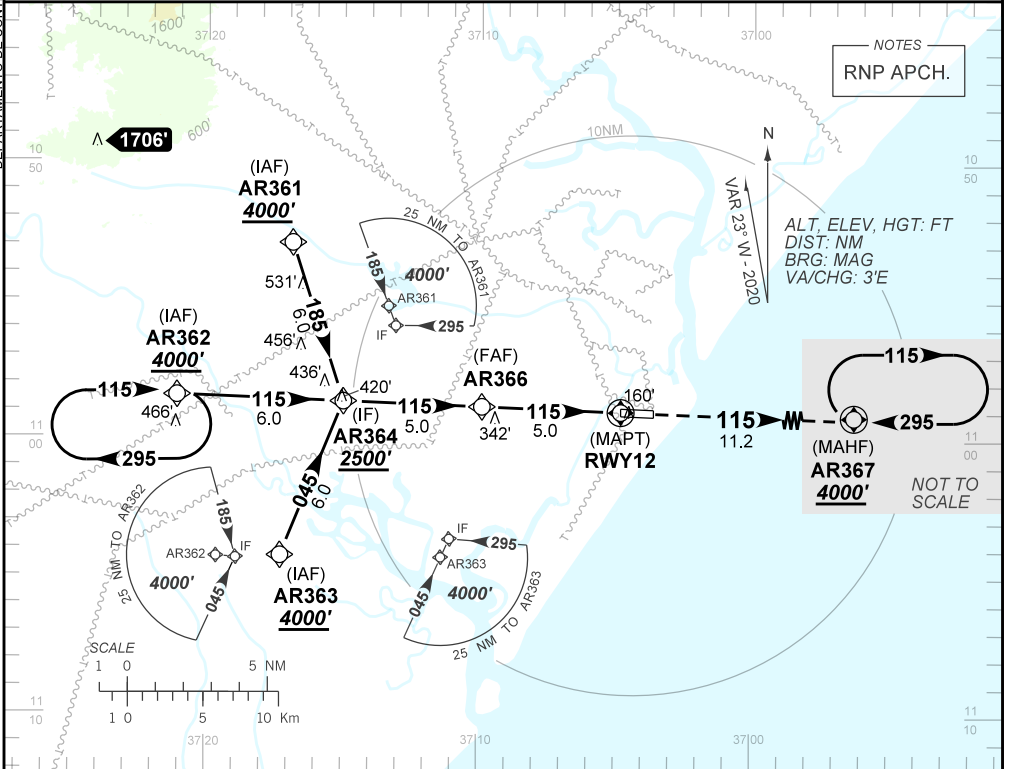
AD ELEV: 23'

RNP Z RWY 12

ATIS NIL	APP ARACAJU 120.30 129.25	TWR ARACAJU 118.80	GNDC NIL
TEMP LNAV/VNAV MIN 10°C / MAX 48°C	FINAL CRS 115°	FAF: 1670'	LNAV/VNAV DA / (OCH): 423' / (400')
LNAV		MDA / (OCH): 570' / (550')	

APCH Perdida: Subir para **4000'** no curso **115** para espera em AR367.

Missed APCH: Climb to **4000'** on course **115** for holding at AR367.



TO THR 12 (NM) 10.0 5.0 2.1 1.6 1.1 0.0

	AR366	4.0	3.0	2.1	1.6	RWY12	Ground Speed (KT)	090	110	130	150	170	190
	1670	1347	1028	742	570	ALT	FPM	500	600	700	800	900	NA
	1647	1324	1005	719	550	(HGT)	FAF-MAPT	NA					

STRAIGHT-IN	CAT	A	B	C	D	E
LNAV/VNAV	DA / (OCH)	423' / (400')				NA
	ALS/NO ALS/RVR ALS (m)	NIL / 1800 / NIL				
LNAV	MDA / (OCH)	570' / (550')				
	ALS/NO ALS/RVR ALS (m)	NIL / 1800 / NIL		NIL / 2500 / NIL		
CIRCLING	MDA / (OCH)	NA				
	VIS (m)					

AIRAC AMDT 2313A1 28 DEC 23

SBAR_IAC_00G 1/1
IAC RNP Z RWY 12

DEPARTAMENTO DE CONTROLE DO ESPAÇO AÉREO

CHANGES: LAYOUT, VIS