

**INSTRUMENT APPROACH
CHART (IAC)**

MACAÉ / Macaé (SBME)

VOR RWY 24

(CAT A, B, C)

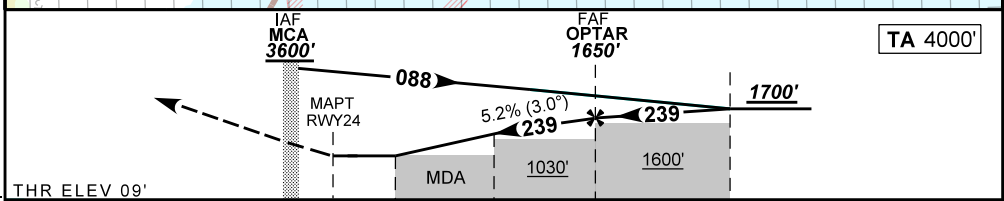
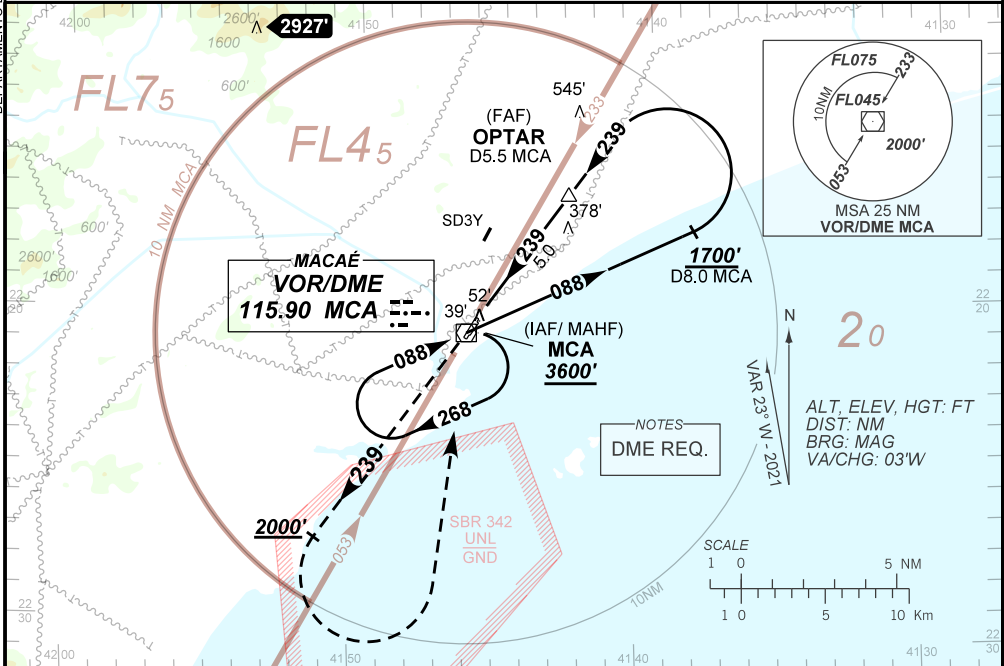
AD ELEV: 09'

ATIS 127.775	APP MACAÉ 119.20 120.00 126.90 128.95 129.30 129.55 130.30 130.85	TWR MACAÉ 118.45	AFIS MACAÉ 119.20
------------------------	---	----------------------------	-----------------------------

VOR/DME MCA 115.90 MHz	FINAL CRS 239°	FAF: 1650'	N/A	VOR MDA / (OCH): 520' / (520')
----------------------------------	--------------------------	----------------------	-----	--

APCH Perdida: Subir para **3600'**. Manter a RDL **239** do VOR MCA até **2000'**. Após, curvar a ESQUERDA direto VOR MCA para espera.

Missed APCH: Climb to **3600'**. Maintain **239** RDL MCA VOR until **2000'**. After, turn LEFT direct MCA VOR for holding.



THR ELEV 09'	0.0	1.5	3.0	5.0	7.5	TO THR 24 (NM)
	0.5	2.0	3.5	5.5	8.0	TO MCA (DME)

RWY24	1.5	2.0	3.0	4.0	OPTAR	Ground Speed (KT)	090	110	130	150	170	190
ALT	520	696	1030	1333	1650	FPM	500	600	700	800	NA	NA
(HGT)	520	687	1021	1324	1641	FAF-MAPT	NA					

CHANGES: AD ELEV, ALT, FREQ, HGT, THR ELEV