

STANDARD DEPARTURE CHART
INSTRUMENT (SID)

IPATINGA/ Usiminas (SBIP)

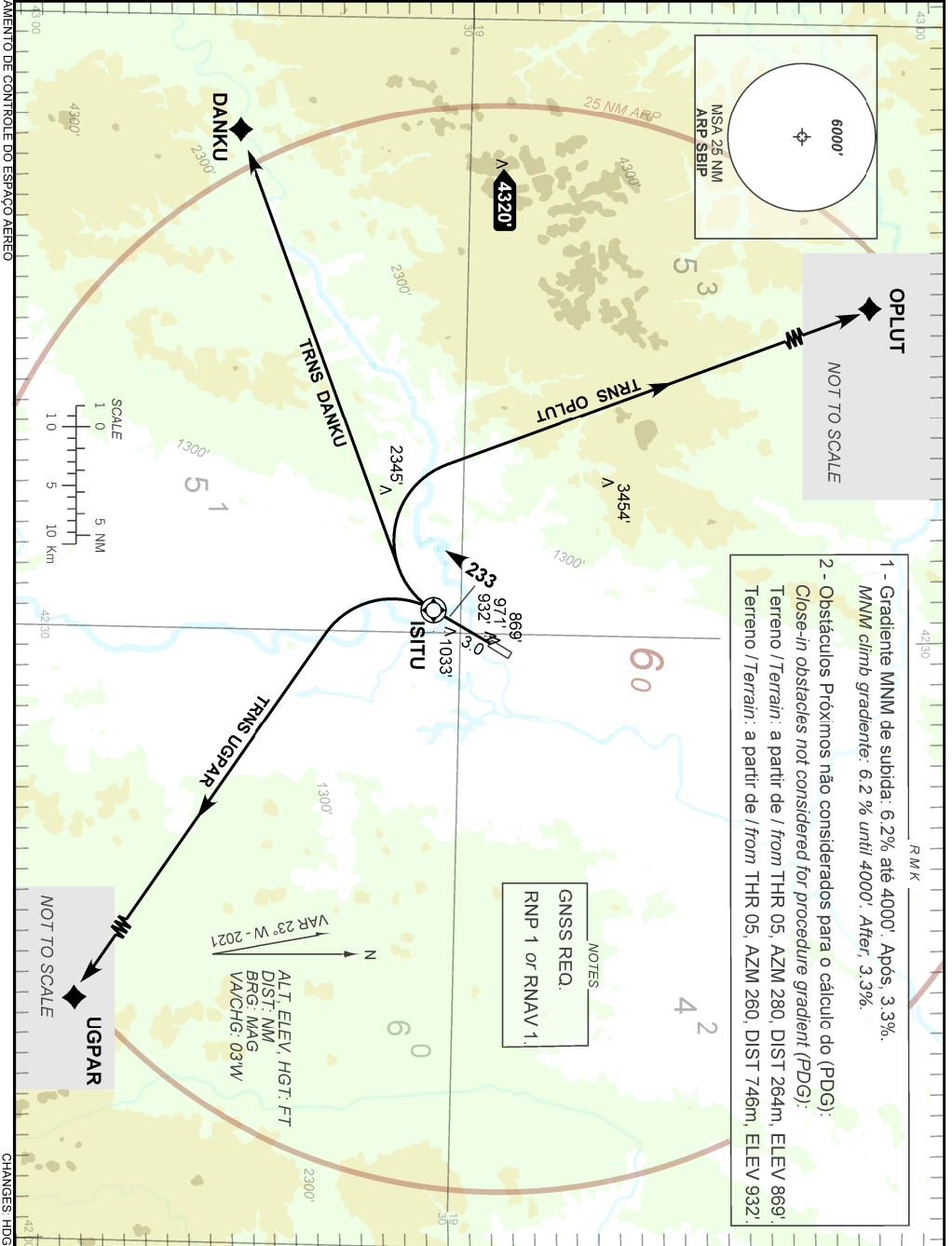
RWY 23

RNAV ISITU 1A

AD ELEV: 786'

TA 6000'	AFIS USIMINAS 130.00	ACC BRASÍLIA 126.75 127.30	ACC RECIFE 126.55 134.75
----------	-------------------------	-------------------------------	-----------------------------

DEPARTAMENTO DE CONTROLE DO ESPAÇO AEREO



- 1 - Gradiente MNM de subida: 6.2% até 4000'. Após, 3.3%. MNM climb gradient: 6.2 % until 4000'. After, 3.3%.
- 2 - Obstáculos Próximos não considerados para o cálculo do (PDG): Close-in obstacles not considered for procedure gradient (PDG):
Terreno / Terrain: a partir de / from THR 05, AZM 280, DIST 264m, ELEV 869';
Terreno / Terrain: a partir de / from THR 05, AZM 260, DIST 746m, ELEV 932'.

NOTES
GNSS REQ.
RNP 1 or RNAV 1

VAR 23° W - 2021
N
ALT ELEV, HGT: FT
DIST: NM
BRG: MAG
V/CHG: 05W