

**INSTRUMENT APPROACH
CHART (IAC)**

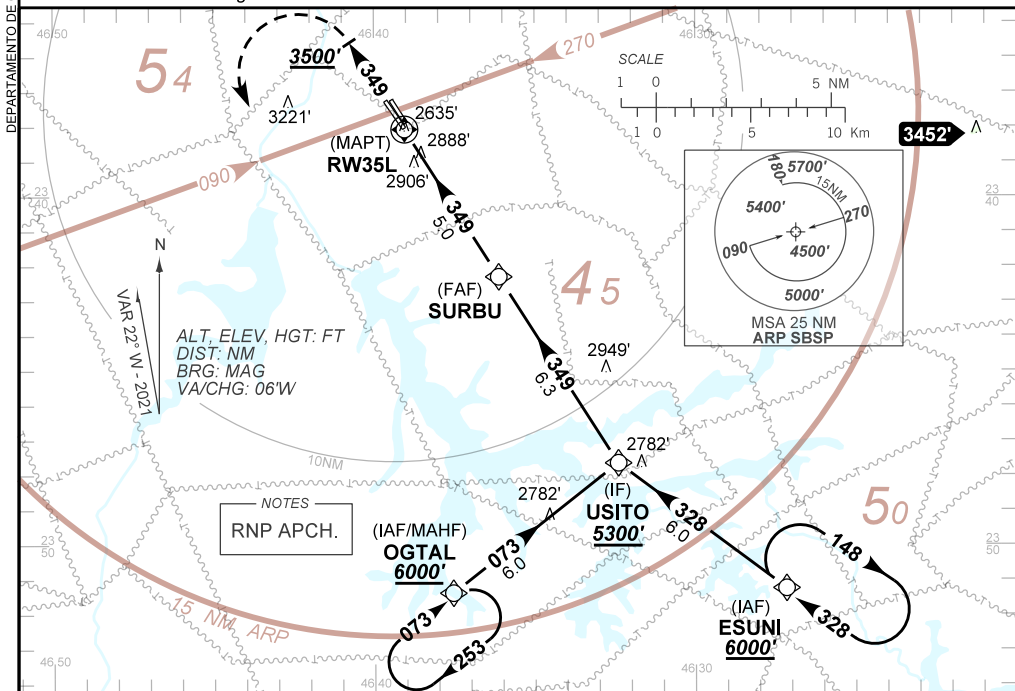
**SÃO PAULO / Congonhas - Deputado Freitas Nobre (SBSP)
RNP Z RWY 35L
(CAT A,B,C)**

AD ELEV: 2634'

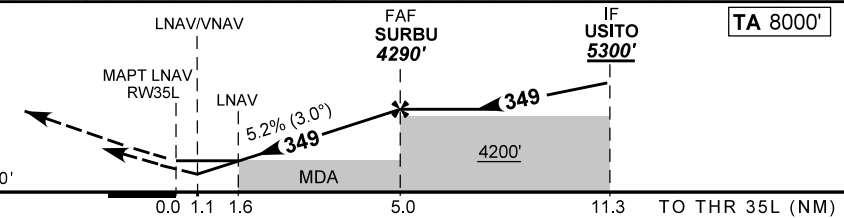
D-ATIS 127.65	APP SÃO PAULO 133.85 119.05 134.90 119.80 129.00 122.75	TWR SÃO PAULO 118.05 127.15	GNDC SÃO PAULO 121.90
-------------------------	---	---------------------------------------	---------------------------------

TEMP LNAV/VNAV MIN 0°C / MAX 50°C	FINAL CRS 349°	FAF: 4290'	LNAV/VNAV DA / (OCH): 3049' / (419')	LNAV MDA / (OCH): 3180' / (550')
---	--------------------------	----------------------	--	--

APCH Perdida: Subir para **6000'**. Manter proa **349** com gradiente MNM de 4% até **3500'**. Após, curvar à ESQUERDA direto OGTAL para espera.
Missed APCH: Climb to **6000'**. Maintain heading **349** MNM climb gradient 4%. until **3500'**. After, turn LEFT direct OGTAL for holding.



NOTES
RNP APCH.



RW35L	1.6	2.0	3.0	4.0	SURBU	Ground Speed (KT)	90	110	130	150	170	190
ALT	3180	3317	3636	3954	4290	FPM	500	600	700	800	NA	NA
(HGT)	550	687	1006	1324	1660	FAF-MAPT	NA					

STRAIGHT-IN	CAT	A	B	C	D	E
LNAV/VNAV	DA / (OCH)	3049' / (419')			NA	
	ALS/NO ALS/ RVR ALS (m)	NIL / 1900 / NIL				
LNAV	MDA / (OCH)	3180' / (550')			NA	
	ALS/NO ALS/ RVR ALS (m)	NIL / 1900 / NIL				
CIRCLING		NA				

CHANGES: WPT.