

**INSTRUMENT APPROACH  
CHART (IAC)**

**NATAL / Campo Augusto Severo, MIL (SBNT)**

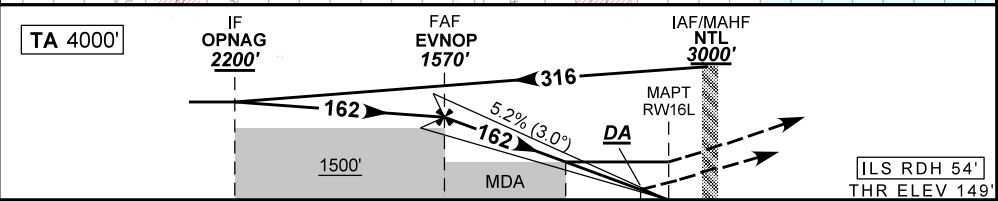
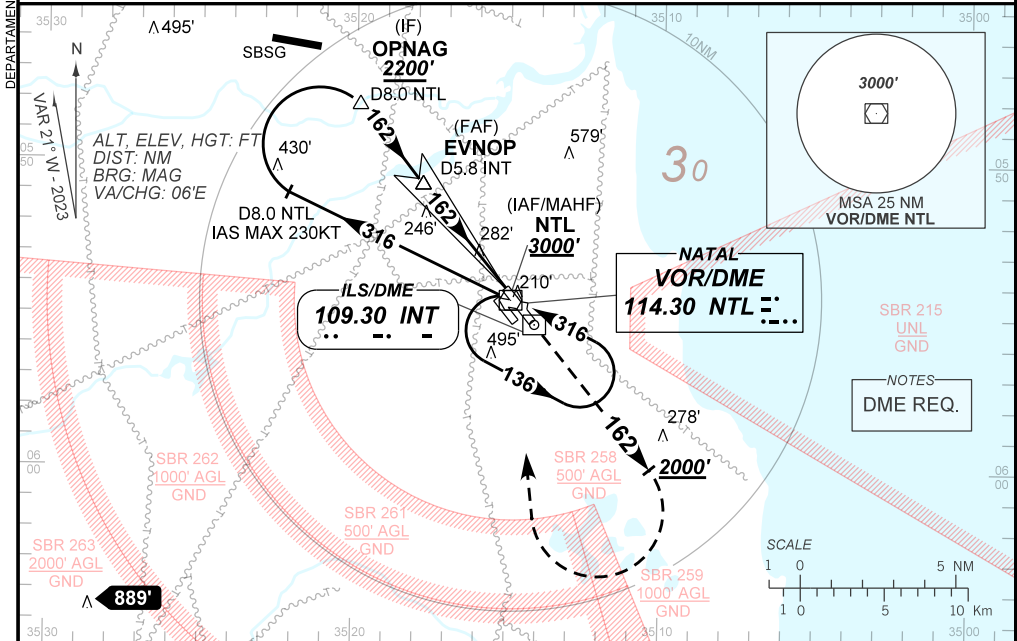
**AD ELEV: 169'**

**ILS X or LOC X RWY 16L**

D-ATIS <b>132.65</b>		APP NATAL <b>119.30 119.65 120.65 129.80</b>			TWR NATAL <b>118.70 122.80</b>		GNDC NATAL <b>121.90</b>	
ILS/DME INT <b>109.30 MHz</b>	FINAL CRS <b>162°</b>	FAF: <b>1570'</b>	DA / (OCH): <b>REFER TO MNM</b>		CAT I	LOC MDA / (OCH): <b>530' / (390')</b>		

APCH Perdida: Subir para **3000'**. Manter a proa **162** até **2000'**. Após, curvar à DIREITA direto VOR NTL para espera.

Missed APCH: Climb to **3000'**. Maintain heading **162** until **2000'**. After, turn RIGHT direct NTL VOR for holding.



TO THR 16L (NM)	7.6	4.3	1.1	0.5	0.0
TO INT (DME)	9.1	5.8	2.6	2.0	1.5

	EVNOP	4.0	3.0	2.0	1.1	RWY16L	Ground Speed (KT)	090	110	130	150	170	190
	1570	1477	1158	840	530	ALT	FPM	500	600	700	800	900	1000
	1421	1328	1009	691	390	(HGT)	FAF-MAPT	NA					

STRAIGHT-IN	CAT	A	B	C	D	E
	DA / (OCH)	349' / (200')				389' / (240')
CAT I	ALS/NO ALS/ RVR ALS (m)	NIL / 1200 / NIL				
	MDA / (OCH)	530' / (390')				
LOC	ALS/NO ALS/ RVR ALS (m)	NIL / 1600 / NIL		NIL / 1800 / NIL		
	MDA / (OCH)	NA				
CIRCLING	MDA / (OCH)	NA				
	VIS (m)	NA				

CHANGES: WPT.