

**INSTRUMENT APPROACH CHART (IAC)**

**RIO DE JANEIRO / Galeão - Antônio Carlos Jobim, INTL (SBGL)**

**AD ELEV: 28'**

**ILS X or LOC X RWY 10**

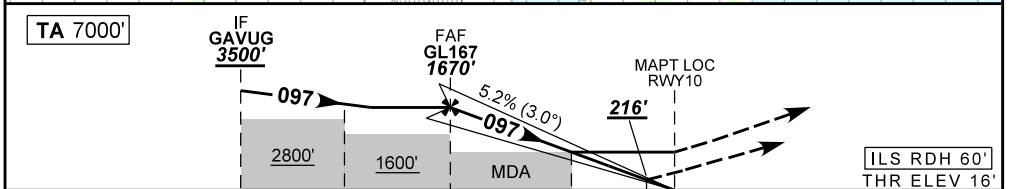
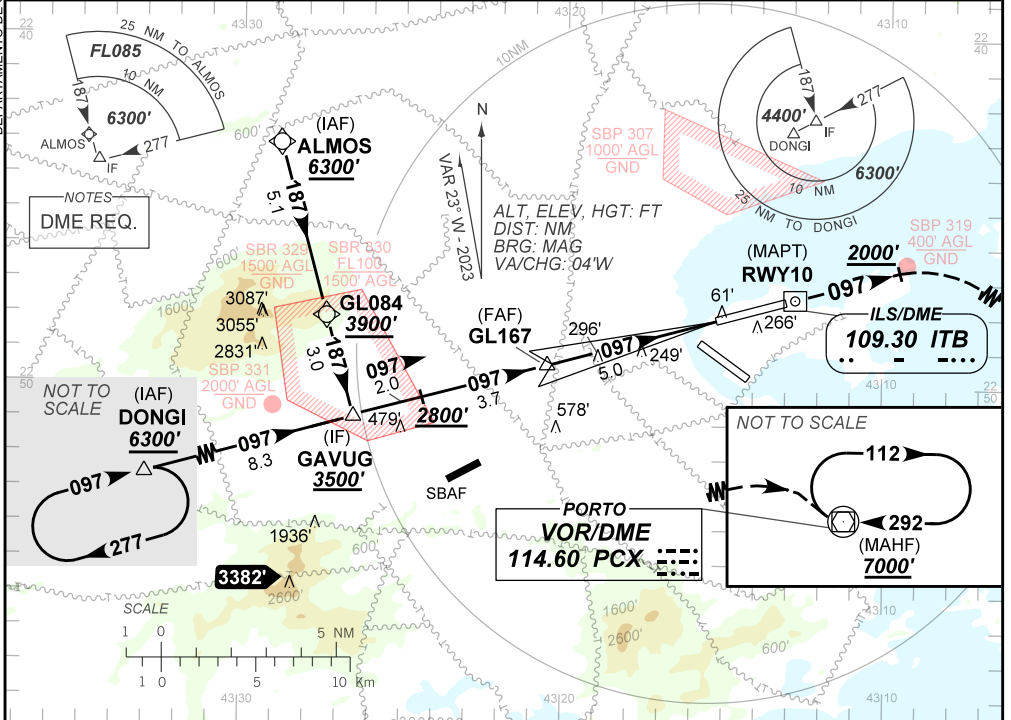
D-ATIS <b>127.60</b>	APP RIO <b>124.95 125.95 129.80 134.95</b>	TWR GALEÃO <b>118.00 118.20</b>	GNDC GALEÃO <b>121.65 128.35</b>
-------------------------	---	------------------------------------	-------------------------------------

ILS/DME <b>109.30 MHz</b>	FINAL CRS <b>097°</b>	FAF: <b>1670'</b>	CAT I <b>DA / (OCH): 216' / (200')</b>	LOC <b>MDA / (OCH): 550' / (540')</b>
------------------------------	--------------------------	----------------------	---	--

APCH Perdida: Subir para **7000'**. Manter rumo **097°** até **2000'**. Após, curvar à DIREITA direto VOR PCX para espera.

Missed APCH: Climb to **7000'**. Maintain course **097°** until **2000'**. After, turn RIGHT direct PCX VOR for holding.

DEPARTAMENTO DE CONTROLE DO ESPAÇO AEREO



TO THR 10 (NM)	10.7	8.7	5.0	1.5	0.4	0.0
TO ITB (DME)	13.1	11.1	7.4	3.9	2.8	2.4

	GL167	4.0	3.0	2.0	1.5	RWY10	Ground Speed (KT)	090	110	130	150	170	190
	1670	1350	1031	713	550	ALT	FPM	500	600	700	800	900	1000
	1654	1334	1015	697	540	(HGT)	FAF-MAPT	NA					

STRAIGHT-IN	CAT	A	B	C	D	E	
	DA / (OCH)	216' / (200')				429' / (413')	
LOC	MDA / (OCH)	550' / (540')				1500 / 1900 / 1100	
	ALS/NO ALS/ RVR ALS (m)	750 / 1600 / 700		800 / 1600 / 700		1700 / 2400 / 1550	
CIRCLING	MDA / (OCH)	NA					
	VIS (m)	NA					

CHANGES: EAC, MIN OPR.

AIRAC AMDT 2405A1 16 MAY 24

SBGL\_IAC\_01A 1/1  
IAC ILS X or LOC X RWY 10